

What if I want to leave the study?

You can leave the study at any time and you don't need to tell us why. You can ask for any notes made about you to be removed from the study. Your doctor will treat you the same if you are in the study or not.

Who will know about me being in the study?

We will send a letter to your doctor (GP and neurologist) letting them know that you are taking part in the project. The research team and anyone else that you choose to tell will also know that you are taking part.

Who has reviewed the study?

All research in the NHS is looked at by a group of people called a Research Ethics Committee. This study has been checked by the NRES Committee North East (Newcastle & North Tyneside 1) and the School of Psychology Ethics Committee at University of Lincoln, and they think it's okay.

What if I want to know more?

If you have questions about the research or if you would like an electronic copy of this information please contact:

Dr. Jonathan Waddington
WESC Foundation, Exeter, EX2 6HA
Telephone: 01392 454349
Email: jwaddington@wescfoundation.ac.uk

After talking to Dr. Waddington, if you decide that you want to take part we will give you a form to sign to show that you are agreeing to help with this research and that you understand everything that we tell you.

If you join the study but then change your mind, it is okay to say you don't want to take part anymore.

What if there is a problem?

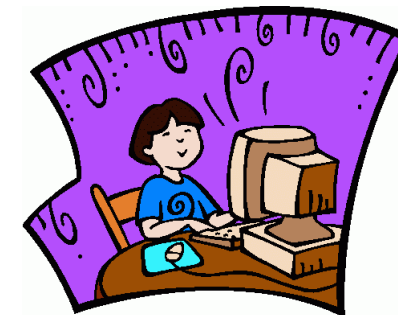
If you have concerns regarding your rights as a research participant or wish to make a complaint please contact:

Dr. Patrick Bourke (Chair of the School of Psychology Research Ethics Committee at the University of Lincoln),
University of Lincoln, Brayford Pool,
Lincoln, LN6 7TS
t: 01522 886 180
e: pbourke@lincoln.ac.uk

If you have any concerns or wish to make a complaint about the eye tests performed at Bristol Eye Hospital, please contact:

Complaints & PALS team
University Hospitals Bristol NHS
Foundation Trust HQ, Marlborough
Street, Bristol, BS1 3NU

**Thank you for taking the time to
read this or listen to someone
read it with you**



Can computer games be used to help improve visual field loss?

**This leaflet is for young adults
aged 16 to 25**

Technology Strategy Board
Driving Innovation



100 years of life-changing discoveries

University Hospitals Bristol NHS
NHS Foundation Trust

South Devon Healthcare NHS
NHS Foundation Trust

NHS
National Institute for
Health Research

What are we trying to find out?

We have made a computer game which we think might help young people with visual field loss to improve the way they use their vision and we are trying to find out if it works.

How can I help?

We would like to ask you and some other young people to play the game. We will ask you to do some simple searching tasks before and after playing the game. We will compare these results to see if the game has helped you and if it could be useful for others as well.

What do you want me to do?

- **Play the computer game**

We would like you to play the computer game when you have free time at home. The game involves using a mouse to find objects shown on the screen to complete each level. You will need a computer or laptop to play the game and time to play it. We will also provide you with a diary that you may use to note which days you play the game.

You should talk to your doctor or nurse about whether or not you should play computer games first. If you have a condition called “photosensitive epilepsy” you might not be able to play.

- **Visit the eye hospital once for an eye test**

We would like you to visit the eye hospital at Bristol, or another approved research site if you prefer, so that our doctor (Dr. Williams) can check that your eyes are healthy and measure your vision. We may have to put drops in your eyes if this has not been done before, but we will use information from existing records if we have your permission to access them or request a copy.

- **Visit us four times so that we can test how quick you are at finding things**

We would like you to visit us at the WESC Foundation in Exeter or at the eye hospital in Bristol if you prefer, on four different days so that we can ask you a few questions about your eyesight. The visits will be: 1) four weeks before starting to play the game, 2) just before starting to play the game, 3) just after the last time you play the game, and 4) four weeks after the last time you play the game.

We would like to see how quick you are at finding things on a table and sorting them by their size and shape. We would also like you to walk along a corridor to see how quick you are at finding brightly coloured cards on the walls of a corridor.

How long does all this take?

We would like you to play the game about five times each week for half an hour each time. We would like you to do this for about six weeks or until you have played the game 30 times in total.

Each visit to the WESC Foundation and the eye hospital will take about an hour. We can repay some of your travel expenses up to a maximum of £30 for each visit.

When I have finished, then what?

The computer game won't be finished when the study is over so we would ask you to return your copy of the game. Then we will make a final copy of the game that you could play in the future.

We would like to keep some of the notes we make about your vision and about you. Don't worry, there will be no way to know that the notes came from you. When we have all the notes we need, we will write a report to explain what we have found. We will send a copy of that report to you.