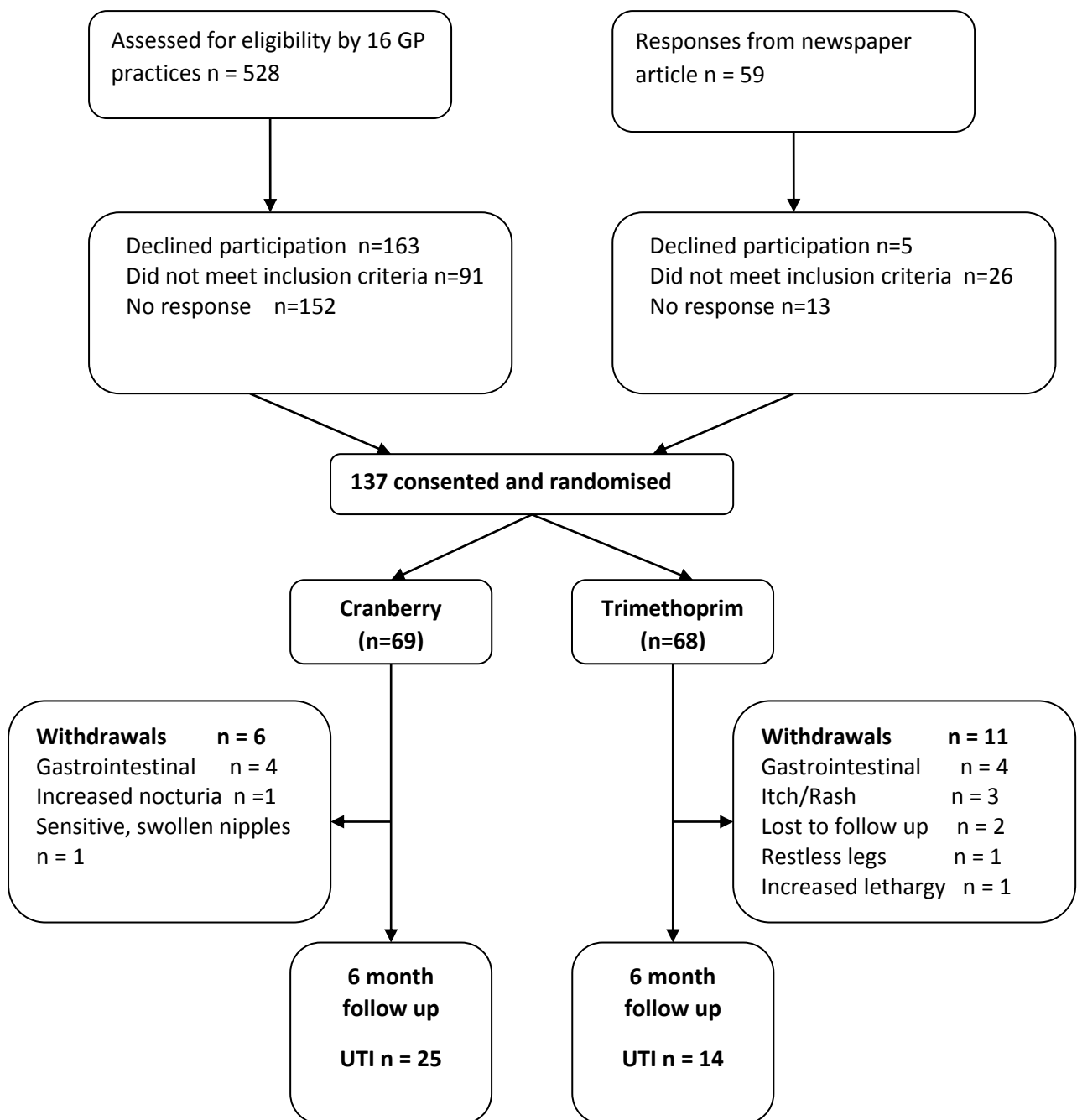


## Participant flow



**Baseline characteristics**

	Cranberry (n=69)	Trimethoprim (n=68)
Mean age (years) (SD)	62.6 (10.8)	63.3 (10.1)
Median number of medications (range)	3 (0-13)	4 (0-11)
Median length of history of UTI (years) (range)	11 (1-50)	18 (1-53)
Median no. of self-reported UTIs in last 12 months (range)	3 (2-15)	3 (2-8)
Median number of antibiotic-treated UTIs in last 12 months (range)	3 (2-15)	2 (2-8)
Bacteriuria at baseline (%)	5 (7)	7 (10)

**Outcomes:**

	Cranberry	Trimethoprim	p
<i>Primary outcome</i>			
No. with symptomatic antibiotic-treated UTI (%)	25 (36)	14 (21)	0.08
Relative risk (95% CI)	1.62 (0.93 to 2.79)		
Time to first UTI (by log-rank test)			0.10
<i>Secondary outcomes</i>			
Median adherence (%) (range)	99 (25 to 149)	100 (66 to 112)	-
Withdrawals (%)	6 (9)	11 (16)	0.21
Relative risk for withdrawal (95% CI)	0.54 (0.19 to 1.37)		

**Adverse events:**

	Cranberry	Trimethoprim
Non-UTI urinary symptoms	12	9
Gastrointestinal upset	13	17
Thrush	3	3
Colds / influenza	4	4
Difficulty swallowing capsules/aftertaste/dry mouth	4	1
Exacerbation of back pain	4	2
Tiredness/lethargy	2	4
Itch/rash	2	5
Abdominal abscess	1	0
Breast carcinoma	1	0
Deterioration in vision	1	0
Vaginal dryness/atrophy	1	2
Falls	1	4
Shingles	0	1
Excessive thirst	0	1
Type 2 diabetes	0	1
Elective surgery	0	4
Migraine	0	1
Nocturia	1	0
Sensitive nipples	1	0
Restless legs	0	1
<b>TOTAL</b>	<b>51</b>	<b>60</b>

