

Participant flow

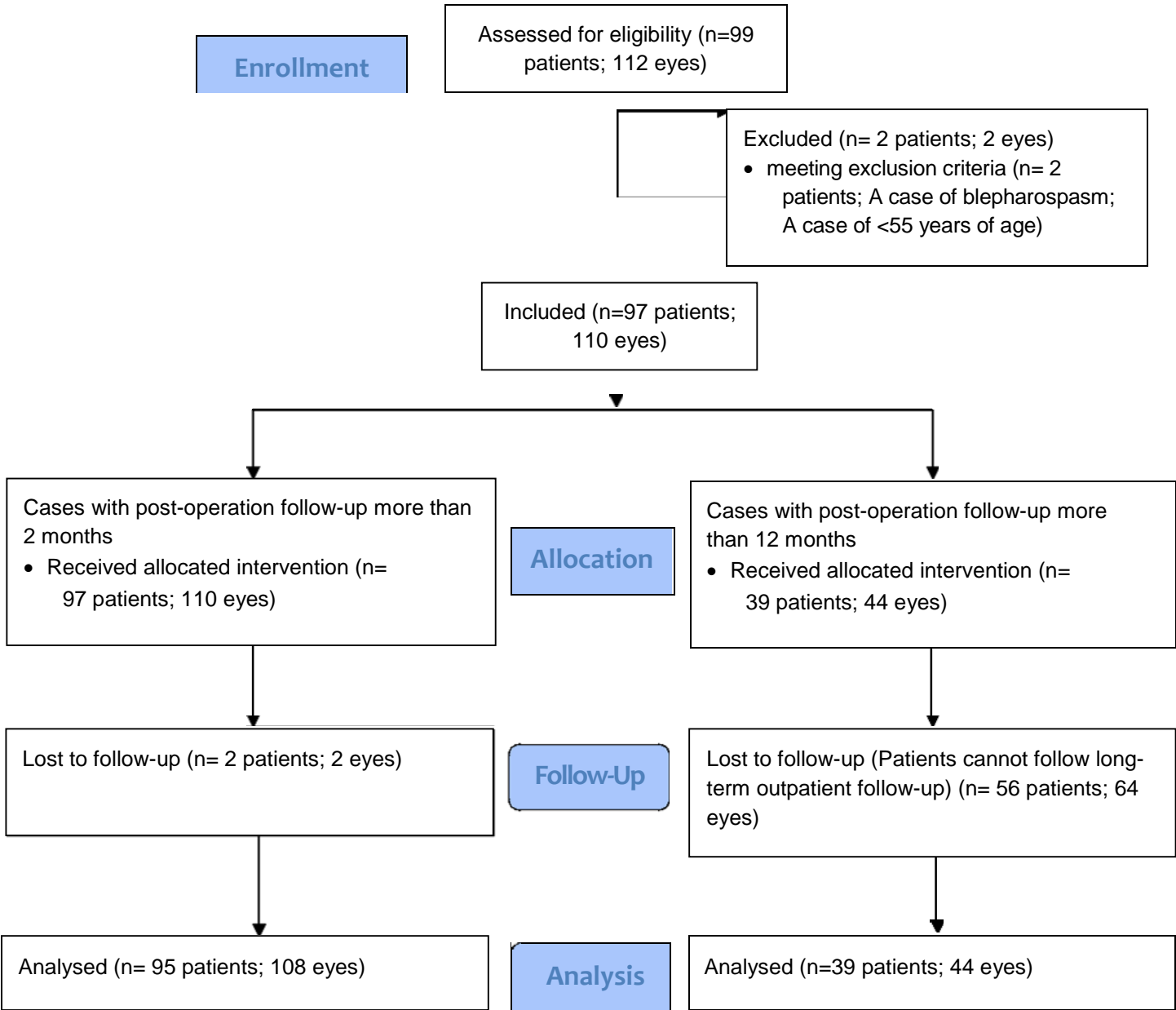


Table 2: The patients list in the recurrent cases

Cases	Gender	Age	Right or left eye	Period to recurrent (months)	Procedure for re-surgery	Result of re-surgery	Sign of abundant obicularis muscle	Sign of horizontal laxity
1	F	82	od	6	Hotz procedure	No more recurrence	+	-
2	F	72	os	8	Same procedure	No more recurrence	+	+
3	F	66	os	10	Same procedure	No more recurrence	+	+
4	M	75	os	49	Hesitate to surgery	NP	+	+

NP: Non performance

**Baseline characteristics**

	Follow-up duration after surgery	
	>2 months (All cases)	>12 months (Cases with long-term follow-up)
Patient characteristics		
Male, n	45	23
Female, n	50	16
Unilateral/bilateral, n/n	82 / 13	34 / 5
Total no. of patients (eyes: od/os), n	95 (108: 55/53)	39 (44: 21/23)
Mean age ± deviation, year	75.11 ± 7.00	75.36 ± 7.07
Range of age, year	55-88	61-88

**Outcome measures**

	Follow-up duration after surgery	
	>2 months (All cases)	>12 months (Cases with long-term follow-up)
Surgical outcome (%)		
Success rate (success cases/total)	96.30(104/108)	97.73(43/44)
Recurrence rate (recurrence of entropion/total)	3.70 (4/108)	2.27(1/44)
Complication rate (symblepharon, infection or wound dehiscence)	0	0
Overcorrection rate (ectropion)	0	0
Follow-up duration, month: mean (range)	13.33 ± 14.81 (2-67)	26.16 ± 15.83 (12-67)

**Adverse events**

There were no adverse events associated with this trial