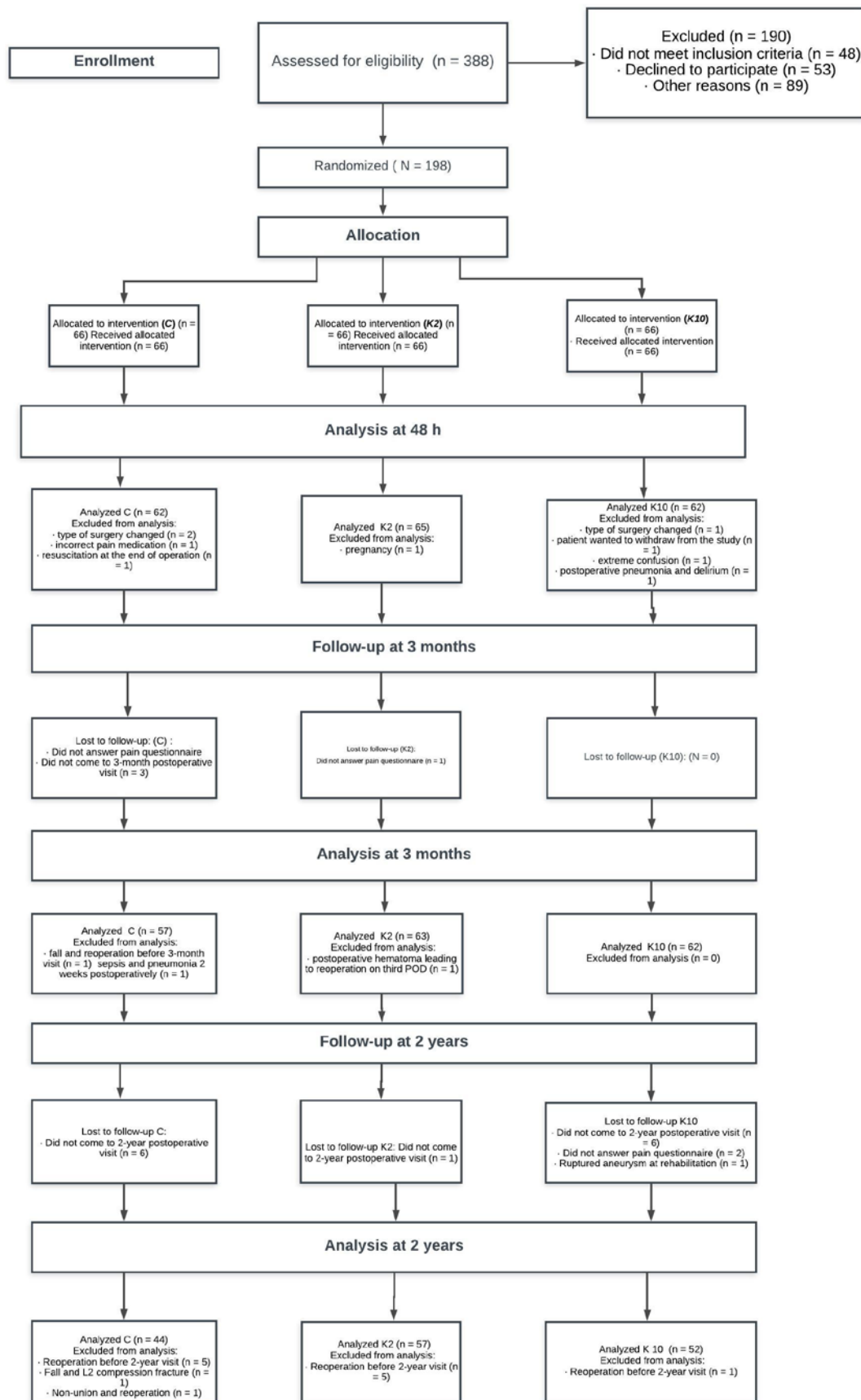


# PARTICIPANT FLOW



## BASELINE CHARACTERISTICS

**Table 1.** Perioperative data and characteristics of patients who were included in the analysis

	<b>Group C (placebo)</b>	<b>Group K2 (S-Ketamine 2 µg/kg/min)</b>	<b>Group K10 (S-Ketamine 10 µg/kg/min)</b>
Number of patients (N)	62	65	62
Female/Male (N)	36/26	45/20	42/20
Age, years	56 [27-83]	57 [21-81]	58 [18-78]
Weight, kg	79 (15)	77 (15)	75 (13)
Height, cm	169 (9)	167 (10)	169 (10)
BMI, kg/m <sup>2</sup>	27.4 [19.2-34.8]	27.4 [18.6-35]	26.5 [17.9-35]
ASA classification, N (%)			
I	9 (14.5)	16 (24.6)	12 (19.4)
II	36 (58.1)	24 (36.9)	30 (48.4)
III	15 (24.2)	25 (38.5)	20 (32.3)
IV	2 (3.2)	–	–
Preoperative MMSE score	28 (1.7)	29 (1.5)	28 (1.8)
Preoperative BDI score	9 [0-43]	7 [0-31]	7 [0-28]
Duration of operation, min	300 (115)	279 (109)	291 (81)
Duration of anesthesia, min	347 (114)	330 (99)	339 (81)
Time from end of surgery to end of anesthesia, min	12 (7)	13 (7)	14 (6)
PACU length of stay, min	229 (65)	237 (77)	246 (74)

Data are mean (SD) or [range] unless otherwise stated. ASA, American Society of Anesthesiologists; BDI, Beck's Depression Inventory; BMI, body mass index; MMSE, Mini-Mental State Examination; PACU, post anesthesia care unit

## OUTCOME MEASURES

### **48h Cumulative Oxycodone Consumption**

The mean (SD) cumulative oxycodone consumption at 48h did not significantly differ between the three study groups: 202 (111) mg for Group C, 174 (99) mg for Group K2, and 181 (92) mg for Group K10. The estimated difference was -28mg (95% CI, -9 to 65) between K2 and C, -21 mg (95% CI, -15 to 57) between K10 and C, and 7 mg (95% CI, -30 to 44) between K10 and K2. There were no significant differences between groups ( $P = 0.39$ ).

## ADVERSE EVENTS

**Table 2.** Adverse events occurrence in groups C, K2, K10.

	C N = 62	K2 N = 65	K10 N = 62	<i>P</i>
CNS adverse events N (%)				
<i>Any</i>	7 (11)	5 (7)	9 (15)	<i>0.47</i>
<i>Hallucinations</i>	0	1 (2)	1 (2)	
<i>Vivid dreams/nightmares</i>	0	0	1 (2)	
<i>Confusion and disorientation</i>	4 (6)	3 (5)	6 (10)	
<i>Visual disturbances</i>	1 (2)	1 (2)	0	
Nausea, N (%)	23 (48)	22 (34)	29 (47)	<i>0.34</i>
Vomiting, N (%)	9 (15)	9 (14)	4(7)	<i>0.28</i>
Quality of sleep, n (well/disrupted/nightmares/ sleepless)	16/37/0/9	18/42/0/5	15/38/1/10	

CNS, central nervous system; C, Group C (placebo);

K2, Group K2 (S-ketamine 2 µg/kg/min); K10, Group K10 (S-ketamine 10 µg/kg/min)