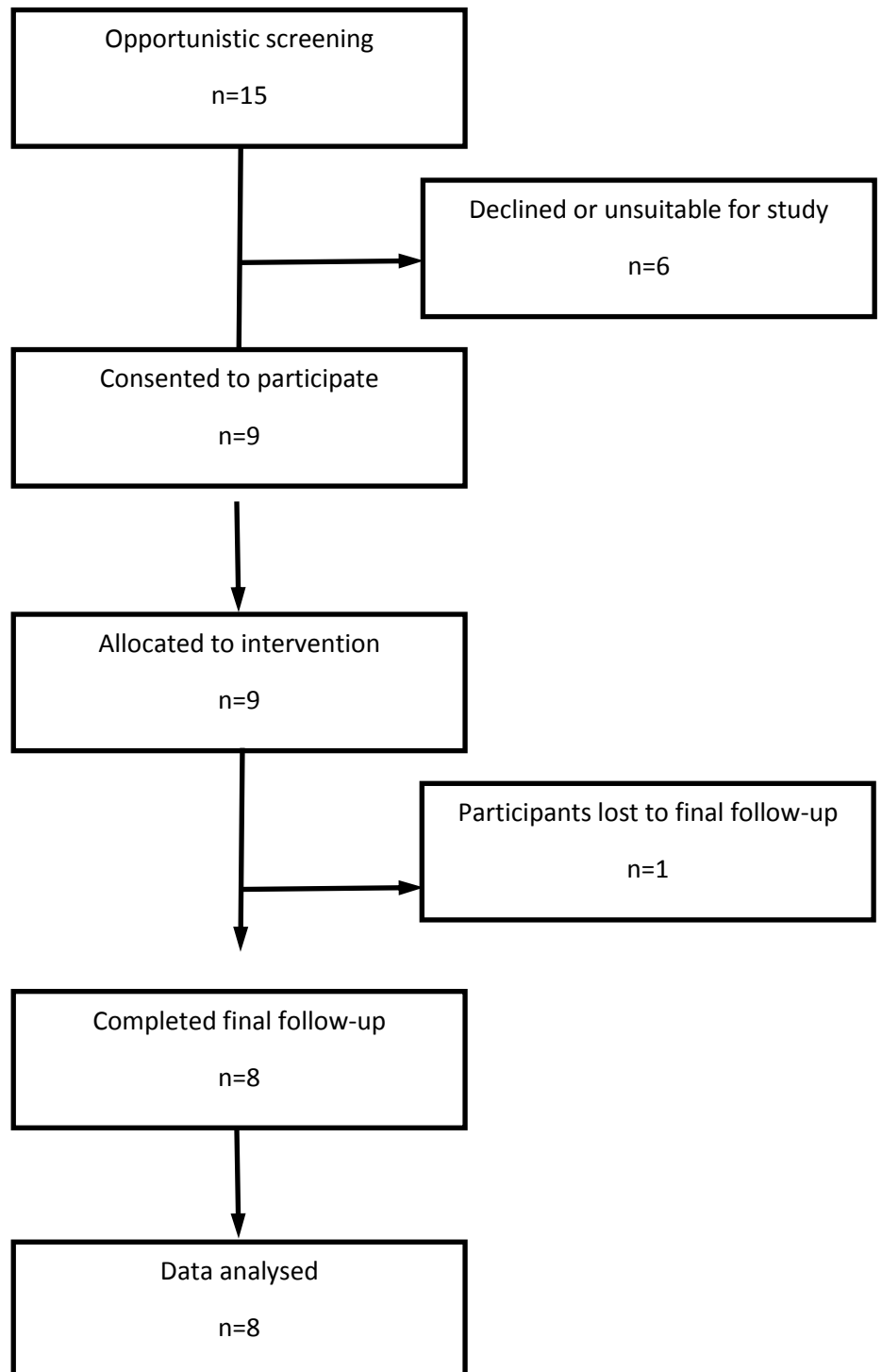


Participant flow:



Baseline Characteristics:

	Total analysed (n=8)
Age (years) mean (SD)	11.4 (4.9)
Gender : males	2
Gender : females	6
Race : Caucasian	7
Race : Asian	1

	Total analysed (n=8)
Homonymous hemianopia (right)	4
Homonymous hemianopia (left)	1
Homonymous sectoral field loss (right)	1
Altitudinal field loss (lower-incongruent)	2

Outcome Measures:

	Difference over pre-intervention phase	Difference over intervention phase	Difference over post-intervention phase
Ranked response time (ranks) mean (SD)	-0.38 (1.92)	-1.25 (1.04)	+0.13 (1.25)
Natural log transformed response time (log units) mean (SD)	+0.070 (0.472)	-0.241 (0.319)	-0.035 (0.211)

	Difference over intervention phase
Patient reported measure of functional vision (CVAQC score) mean (SD)	+3.6 (6.1)
Patient reported measure of quality of life (IVI_C score) mean (SD)	+2.3 (2.8)

	Week 1	Week 2	Week 3	Week 4	Week 5	Week 6	Week 7
Compliance with intervention (tasks/week) mean (SD)	353 (187)	280 (219)	225 (193)	213 (209)	225 (158)	193 (128)	189 (166)

Adverse Events:

There were no adverse events associated with this trial.