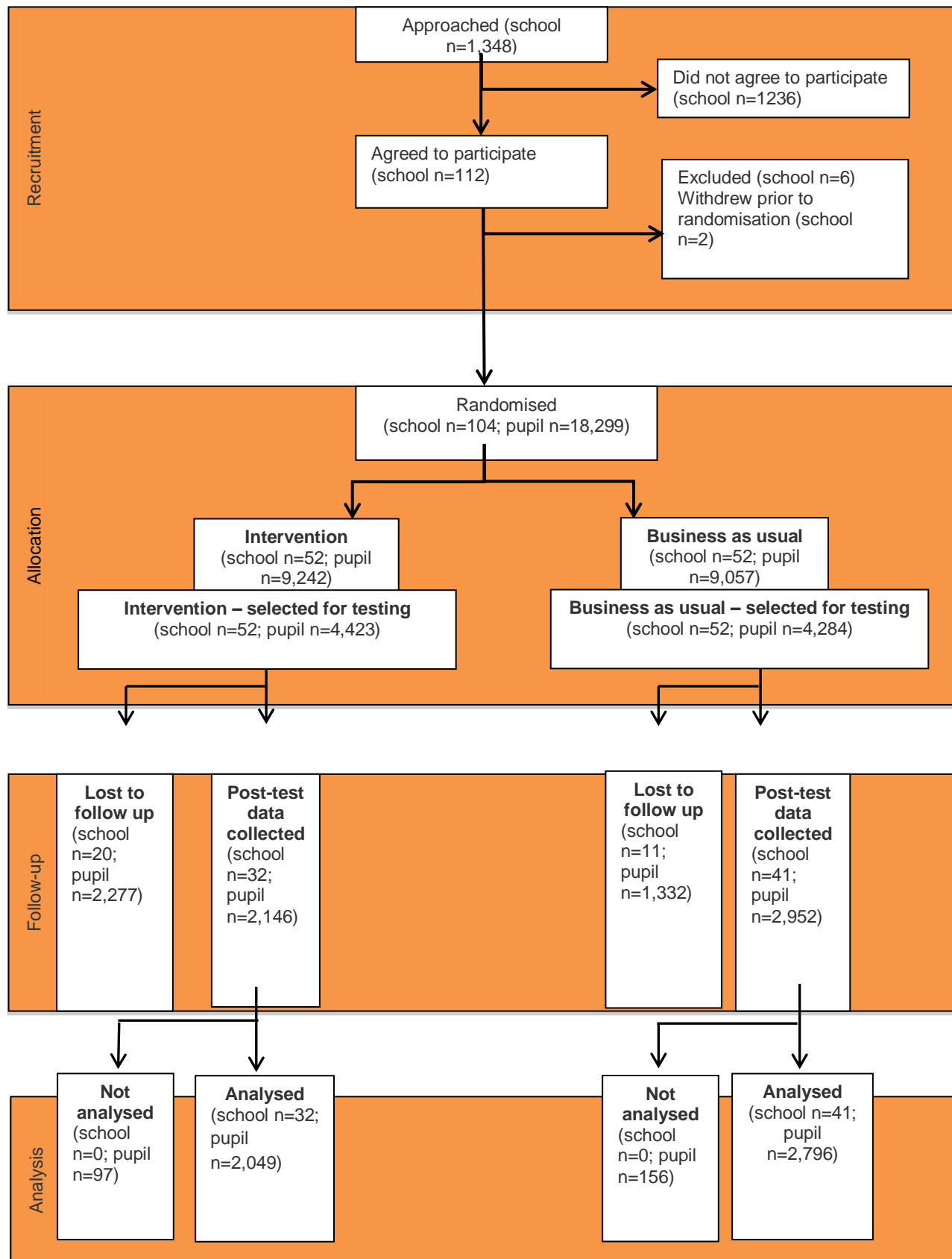


Participant Flow



Baseline Characteristics

Table 1. Baseline comparison: randomised sample

School-level (categorical)	Intervention group		Control group		
	n/N (missing)	Count (%)	n/N (missing)	Count (%)	
Gender status of school					
Co-educational	3,718/4,423(0)	3,718(84.1%)	3,568/4,284(0)	3,568(83.3%)	
Single-sex	705/4,423(0)	705(15.9%)	716/4,284(0)	716(16.7%)	
Urban or rural					
Urban	3,995/4,423(0)	3,995(90.3%)	3,898/4,284(0)	3,898(91%)	
Rural	428/4,423(0)	428(9.7%)	386/4,284(0)	386(9%)	
School type					
Academy— Spons- ored	716/4,423(0)	716(16.2%)	721/4,284(0)	721(16.8%)	
Academy Converter	197/4,423(0)	197(4.5%)	82/4,284(0)	82(1.9%)	
Academy Convertor – Mainstream	1,501/4,423(0)	1,501(33.9%)	1,549/4,284(0)	1,549(36.2%)	
Community School	945/4,423(0)	945(21.4%)	737/4,284(0)	737(17.2%)	
Foundation School	389/4,423(0)	389(8.8%)	622/4,284(0)	622(14.5%)	
Free School – Mainstream	168/4,423(0)	168(3.8%)	62/4,284(0)	62(1.5%)	
Voluntary aided School	452/4,423(0)	452(10.2%)	424/4,284(0)	424(9.9%)	
Voluntary controlled School	55/4,423(0)	55(1.2%)	87/4,284(0)	87(2%)	
School-level (continuous)	n (missing)	Mean (SD)	n (missing)	Mean (SD)	
Number of Y8 pupils	4,423 (0)	199.9 (59.7)	4,284(0)	208.6 (77.7)	
Number of Y8 classes	4,423 (0)	7.2 (2.1)	4,284(0)	7.5 (3)	
Percentage of absence sessions in previous academic year (16/17)	4,423(0)	5.5 (1)	4,105(179)	5.3 (0.9)	
Percentage of pupils eligible for FSM	4,423(0)	15.5 (8.6)	4,047(237)	14.9 (9.9)	
Average KS2 score	-	-	-	-	
Pupil-level (categorical)	n/N (missing)	Count (%)	n/N (missing)	Count (%)	
Eligible for FSM					
Eligible	1,533/4,409(14)	1,533(34.8%)	1,374/4,263(21)	1,374(32.2%)	
Not Eligible	2,876/4,409(14)	2,876(65.2%)	2,889/4,263(21)	2,889(67.8%)	
Gender					
Boys	2,007/4,423(0)	2,007(45.4%)	2,013/4,284(0)	2,013(47%)	
Girls	2,416/4,423(0)	2,416(54.6%)	2,271/4,284(0)	2,271(53%)	
Pupil-level (continuous)	n (missing)	Mean (SD)	n (missing)	Mean (SD)	Effect Size
Pre-test score (Key Stage 2)	4,216(207)	71.1(23.9)	4,028(256)	72.6(23.5)	
Number of absence sessions in previous academic year (16/17)	4,422(1)	16.1(21.3)	4,262(22)	15(17.9)	

Outcome Measures

Table 2. The impact of the programme on maths attainment (effect size estimation)

Outcome	Raw means		Effect size		n in model (intervention; control)	Hedges g (95% CI)	p- value
	Intervention group	Control group					
	n (missing)	Mean (95% CI)	n (missing)	Mean (95% CI)			
Post-test in maths	2,049 (2,374)	30.2 (29.6, 30.8)	2,796 (1,488)	31.1 (30.5, 31.6)	4,845 (2,049; 2,796)	-0.008 (- 0.06, 0.05)	0.661

Table 3. The impact of the programme on maths attainment (differences in means)

Outcome	Unadjusted differences in means	Adjusted differences in means	Intervention group n (missing)	Variance of outcome	Control group n (missing)	Variance of outcome	Pooled variance	Population variance (if available)
Post-test in maths	-0.9	-0.34	2,049 (2,374)	40.9	2,796 (1,488)	46.3	44.1	-

Adverse Events

There were no adverse events associated with this trial