

## What if I want to leave the study?

You can leave the study at any time and you don't need to tell us why. You can ask for any notes made about you to be removed from the study. Your doctor will treat you the same if you are in the study or not.

## Who will know about me being in the study?

Your doctor, your parent or carer, the research team, and anyone else that you choose to tell.

## Who has reviewed the study?

All research in the NHS is looked at by a group of people called a Research Ethics Committee. This study has been checked by the NRES Committee North East (Newcastle & North Tyneside 1) and the School of Psychology Ethics Committee at University of Lincoln, and they think it's okay.

## What if I want to know more?

Your parent or carer will probably be able to help, and they will know how to contact the research team. If you would like an electronic copy of this leaflet or if you still have questions please contact:

Dr. Jonathan Waddington  
WESC Foundation, Exeter, EX2 6HA  
Telephone: 01392 454349  
Email: [jwaddington@wescfoundation.ac.uk](mailto:jwaddington@wescfoundation.ac.uk)

Your parent or carer knows about the study. If they are happy for you to join, you can choose to join or not.

You will need to sign a form to show that you agree to help with this research and that you understand what we have told you.

If you join but then change your mind, it is okay to say you don't want to take part anymore.

## What if there is a problem?

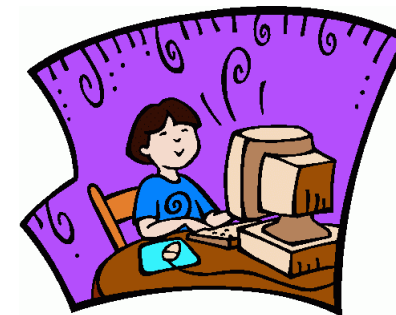
If you have concerns regarding your rights or wish to make a complaint then please contact:

Dr. Patrick Bourke (Chair of the School of Psychology Research Ethics Committee at the University of Lincoln),  
University of Lincoln, Brayford Pool,  
Lincoln, LN6 7TS  
t: 01522 886 180  
e: [pbourke@lincoln.ac.uk](mailto:pbourke@lincoln.ac.uk)

If you have any concerns or wish to make a complaint about the eye tests performed at Bristol Eye Hospital, please contact:

Complaints & PALS team  
University Hospitals Bristol NHS Foundation  
Trust HQ, Marlborough Street, Bristol, BS1  
3NU

**Thank you for taking the time to  
read this or listen to someone  
read it with you**



## Can a computer game be used to help improve vision?

**This leaflet is for young people  
aged 12 to 16**

Technology Strategy Board  
Driving Innovation



100 years of life-changing discoveries

University Hospitals Bristol **NHS**  
NHS Foundation Trust

South Devon Healthcare **NHS**  
NHS Foundation Trust  
**NHS**  
National Institute for  
Health Research

## What are we trying to find out?

We have made a computer game which might help young people with visual impairment to improve the way they use their vision. We are trying to find out if it works.

## How can I help?

We would like to ask you and some other young people to play the game at home over six weeks. We will ask you to do some simple searching tasks before and after the six weeks. We will compare these results to see if the game has helped you, and if it could be useful for other people as well.

## What do you want me to do?

- **Play the computer game**

We would like you to play the computer game when you have free time at home over six weeks. The game involves using a mouse to find objects shown on the screen to complete each level.

You will need a computer or laptop to play the game and time to play it. We will also give you or your parent/carer a diary to write down which days you play the game.

You should talk to your parent, carer or doctor about whether or not you should play computer games first. If you have a condition called epilepsy you might not be able to play.

- **Visit the eye hospital for an eye test**

We would like you to visit the eye hospital so that our doctor (Dr. Williams) can check that your eyes are healthy and measure your vision.

- **Visit us so that we can test how quick you are at finding things**

We would like you to visit us at the WESC Foundation in Exeter or at the eye hospital in Bristol if you prefer, on four different days so that we can ask you a few questions about your eyesight.

We would like to see how quick you are at finding things on a table and sorting them by their size and shape. We would also like you to walk along a corridor to see how quick you are at finding brightly coloured cards on the walls of a corridor.



## How long does all this take?

If you decide to take part, the study will last about 14-16 weeks.

We would like you to play the game about five times each week for half an hour each time. We would like you to do this for about six weeks or until you have played the game 30 times in total.

Each visit to the WESC Foundation and the eye hospital will take about an hour.

## When I have finished, then what?

The computer game won't be finished when the study is over so we would ask you to return your copy of the game. Then we will make a final copy of the game that you could play in the future.

We would like to keep some of the notes we make about your vision and about you. Don't worry, there will be no way to know that the notes came from you. When we have all the notes we need, we will write a report to explain what we have found. We will send a copy of that report to you and your parent or carer.