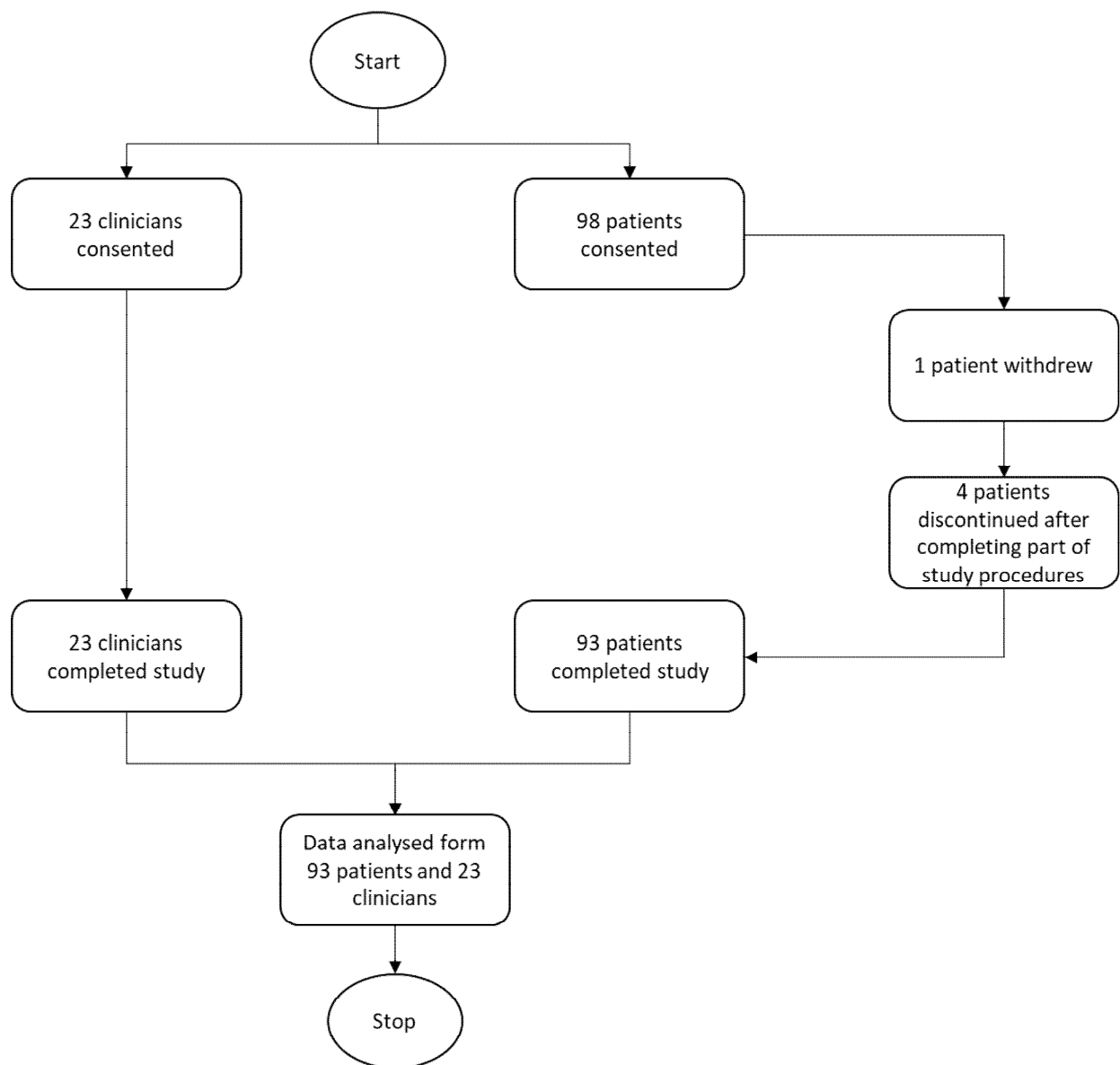


Participant flow



Baseline Characteristics / demographic data

	Adults	Children
Number of recipients	73	20
Gender		
Male	36	7
Female	37	13
Mode of hearing		
Unilateral	46	3
Bilateral	5	16
Bimodal	22	1
Cause of deafness		
Congenital	10	12
Progressive	54	5
Sudden	7	2
Unknown	2	1
Age at test (yrs.)	60 (19-87)	12 (6 to 17)
Age at onset of hearing loss (implanted ear) (yrs)	24 (0 to 70)	1 (0 to 12)
Duration of hearing loss (preimplant) (yrs)	30.4 (0.5 - 68.5)	5.1 (1.5 - 12)
*CI-experience (yrs)	5.1 (0.33 -18)	5.5 (0.25-14)

Outcome Measures:

Outcome measure	Result
Primary outcome measure: Whether the test battery provides sufficient information for the clinician to determine if the recipient needs any intervention, assessed through the Clinician Questionnaire at the single study visit.	In 92 out of 93 recipient participants the test battery reached the same conclusion as the clinician to the question whether the recipient required any clinical intervention.
Secondary outcome measure: The acceptance of the concept of remote monitoring for recipients or parent/carers, assessed through the Recipient/Parent Questionnaire at the single study visit	The number of recipient participants who reported that they would be satisfied or very satisfied if their clinic visits are determined based on the Remote Monitoring was significantly higher than those who were neutral or dissatisfied ($p>0.001$).

Adverse Events:

An adverse event was reported for recipient participant where the recipient participant's leg was hit accidentally by the iPad. The event was resolved without any action. There were no serious adverse events reported in the study.