

Figure 1. Flow of participants through study

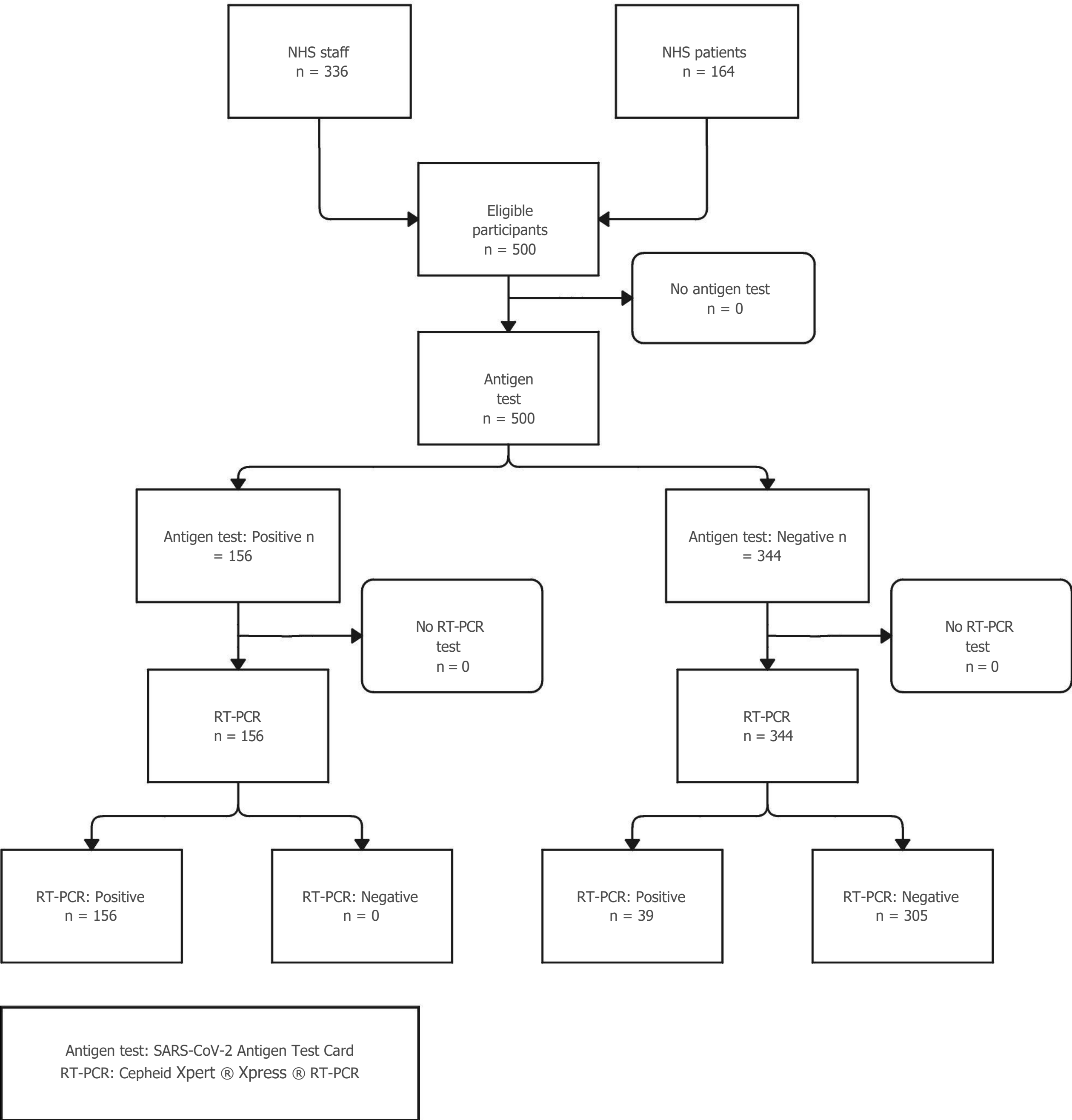


Table 1. Participant characteristics (n=500)

| | |
|---|---------------------------|
| Characteristics | All participants n=500 |
| Gender, n (%) | |
| Male | 158 (31.6) |
| Female | 342 (68.4) |
| Age (years) | |
| Mean (SD) | 51.4 (20.5) |
| Range | 18 - 98 |
| Age < 65, n (%) | 370 (74.0) |
| Age ≥ 65, n (%) | 130 (26.0) |
| Participant role, n (%) | |
| NHS staff | 336 (67.2) |
| NHS patients | 164 (32.8) |
| Symptoms | |
| Symptomatic | 179 (35.8) |
| Asymptomatic | 321 (64.2) |
| Ct values of RT-PCR positive samples, n (%) | 195 (39.0) |
| Ct < 25 | 102 (52.3) |
| Ct 25 - 35 | 77 (39.5) |
| Ct > 35 | 16 (8.2) |
| SARS-CoV-2 Omicron sub-variants | 195 (39.0) |
| BA.1 | 22 (11.3) |
| BA.2 | 67 (34.4) |
| BA.5 | 57 (29.2) |
| No lineage | 49 (25.1) |

Table 3: Primary outcome measure - overall diagnostic performance of the MP Biomedicals antigen test

| | NUMBER (%) | SENSITIVITY % (95% CI) | SPECIFICITY % (95% CI) | ACCURACY % (95% CI) |
|-------|---------------|---------------------------|---------------------------|------------------------|
| TOTAL | 500 | 80.0 (73.7 to 85.5) | 100 (98.8 to 100) | 92.2 (89.5 to 94.4) |

Table 4: Secondary outcome measures - diagnostic performance of the MP Biomedicals antigen test in various categories

| | | | | |
|--|---------------|------------------------|----------------------|------------------------|
| GENDER | | | | |
| MALES | 158 (31.6) | 85.3 (76.5 to 91.7) | 100 (94.3 to 100) | 91.1 (85.6 to 95.1) |
| FEMALES | 342 (68.4) | 75.0 (65.3 to 83.1) | 100 (98.5 to 100) | 92.7 (89.4 to 95.2) |
| AGE | | | | |
| AGE < 65 years | 370 (74.0) | 72.0 (61.8 to 80.9) | 100 (98.7 to 100) | 93.0 (89.9 to 95.4) |
| AGE ≥ 65 years | 130 (26.0) | 87.3 (79.2 to 93.0) | 100 (87.7 to 100) | 90.0 (83.5 to 94.6) |
| PARTICIPANT ROLE | | | | |
| NHS STAFF | 336 (67.2) | 70.0 (56.8 to 81.2) | 100 (98.7 to 100) | 94.6 (91.7 to 96.8) |
| NHS PATIENTS | 164 (32.8) | 84.4 (77.2 to 90.1) | 100 (88.1 to 100) | 87.2 (81.1 to 91.9) |
| Ct VALUES | | | | |
| PCR POSITIVES: | 195 | | | |
| CT < 25 | 102 (52.3) | 98.0 (93.1 to 99.8) | - | - |
| CT 25 – 35 | 77 (39.5) | 68.8 (57.3 to 78.9) | - | - |
| CT > 35 | 16 (8.2) | 18.8 (4.1 to 45.7) | - | - |
| SYMPTOMATIC VS ASYMPTOMATIC | | | | |
| SYMPTOMATIC | 179 | 82.2 (74.1 to 88.6) | 100 (94.1 to 100) | 88.3 (82.6 to 92.6) |
| Days 0-3 | 132 (73.7) | 80.0 (69.9 to 87.9) | 100 (92.5 to 100) | 87.1 (80.2 to 92.3) |
| Days 4-7 | 35 (19.6) | 100 (85.8 to 100) | 100 (71.5 to 100) | 100 (90.0 to 100) |
| Days 8-10 | 12 (6.7) | 55.6 (21.2 to 86.3) | 100 (29.2 to 100) | 66.7 (34.9 to 90.1) |
| Days 0-7 | 167 (93.3) | 84.4 (76.2 to 90.6) | 100 (93.8 to 100) | 89.8 (84.2 to 94.0) |
| ASYMPTOMATIC | 321 | 76.6 (65.6 to 85.5) | 100 (98.5 to 100) | 94.4 (91.3 to 96.6) |
| SARS-CoV-2 Omicron sub-variants | | | | |
| BA.1 | 22 (11.3) | 72.7 (49.8 to 89.3) | - | - |
| BA.2 | 67 (34.4) | 86.6 (76.6 to 93.7) | - | - |
| BA.5 | 57 (29.2) | 91.2 (80.7 to 97.1) | - | - |
| No lineage | 49 (25.1) | - | - | - |

There were no adverse events associated with this study.