

AI is being used in our department as part of a research study



Version No. V1.4 | Date 18th Feb 2023

About the study

For the duration of a research study artificial intelligence (AI) is being used in the department as an aid, to NHS staff. It works by highlighting possible abnormalities on Chest X-rays that might need further tests. However, the clinical staff decide, with you, if anything further is needed.

We're deploying medically approved software (that is approved by the Medicines and Healthcare products Regulatory Agency) to see if we can help find patients who would benefit most from a CT scan sooner. The study we are doing compares the value of having the AI result on a Chest X-ray available straight away or later on and is called: **"Impact of immediate AI enabled patient triage to Chest CT on the lung cancer pathway"** or **"LungIMPACT"** for short.

The way we are doing this is that on some days, the AI result will be available at the same time as the chest X-ray is taken whereas on others it will be available later, when the chest x-ray is reviewed and reported by a radiologist or radiographer. The days will be decided at random and you will not know which they are. All people's chest X-rays, if they are requested by a GP, have the AI applied.

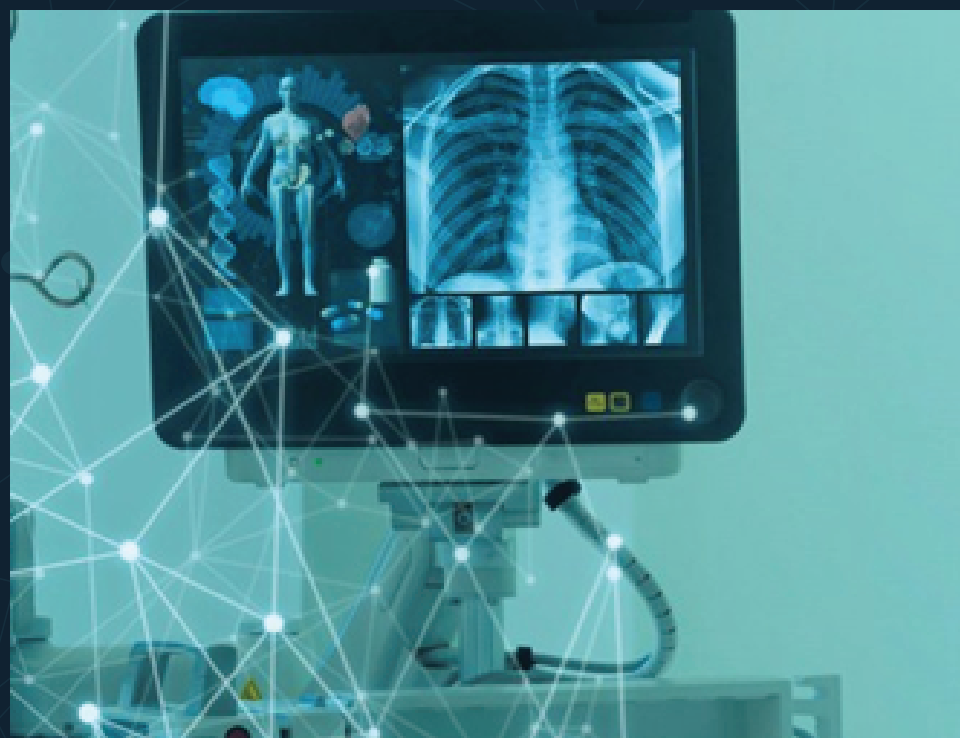
The Research Ethics approval number is IRAS 317009. The study is funded by the Small Business Research Initiative (number SBRICO1P3039). The study is planned to run at 8 NHS Hospitals.

Contact below for any further Queries or if you do not want to be included in this study:



For any further queries, scan the QR code





The chest X-ray

The chest X-ray is taken by a radiographer and then reviewed later when it is reported by a trained healthcare professional. Sometimes, if an abnormality is seen by the radiographer, it is discussed with colleagues and you may be offered a further test, usually a CT scan. The research study will test whether this process is improved if AI is also available at the time the chest X-ray is taken. For the duration of the study, all chest X-rays will have AI – it is just the timing of the information that is different.



Will I have to wait longer ?

One X-ray is all that most patients will need but your appointment could take longer and involve further tests. We will try not to keep you waiting longer than 10 minutes. You may be asked to wait for your results. Waiting for a longer time does not mean there is something wrong. Most patients have a normal result. This means that there were no signs of abnormality on the X-ray. While this is good news, you will need to make an appointment with your GP to check if anything further is needed. It is also important to go back to your GP quickly in the future with concerns about new or existing symptoms.



What if the X-ray shows something?

If the X-ray shows something that might be important, we will ask you to make an appointment with your GP and we may also refer you for further tests or offer you a CT scan the same day. Any abnormality that is not possibly cancerous, but still needs attention will be flagged and dealt with through our existing clinical pathways.



Will the information be kept securely ?

Yes, all personal information is kept confidential and private. No information leaves the hospital computer systems. If you do not want to have your anonymous data used in this study, you should tell us and we can help you complete a Data Opt-out form. If you have already opted out of sharing your data, your data will not be used in the research.

All information passed to the research team would have details that might identify you removed, however you can opt out your data being used for this research by contacting via email, telephone or post (see below) or by asking the radiographer when you have your X-ray. You are able to opt-out up to two weeks after your X-ray.

Ph. no.: _____ Email: _____

Postal Address _____

Nottingham Data Ph. no.: _____ Email: _____

Protection Officer: _____

Postal Address _____