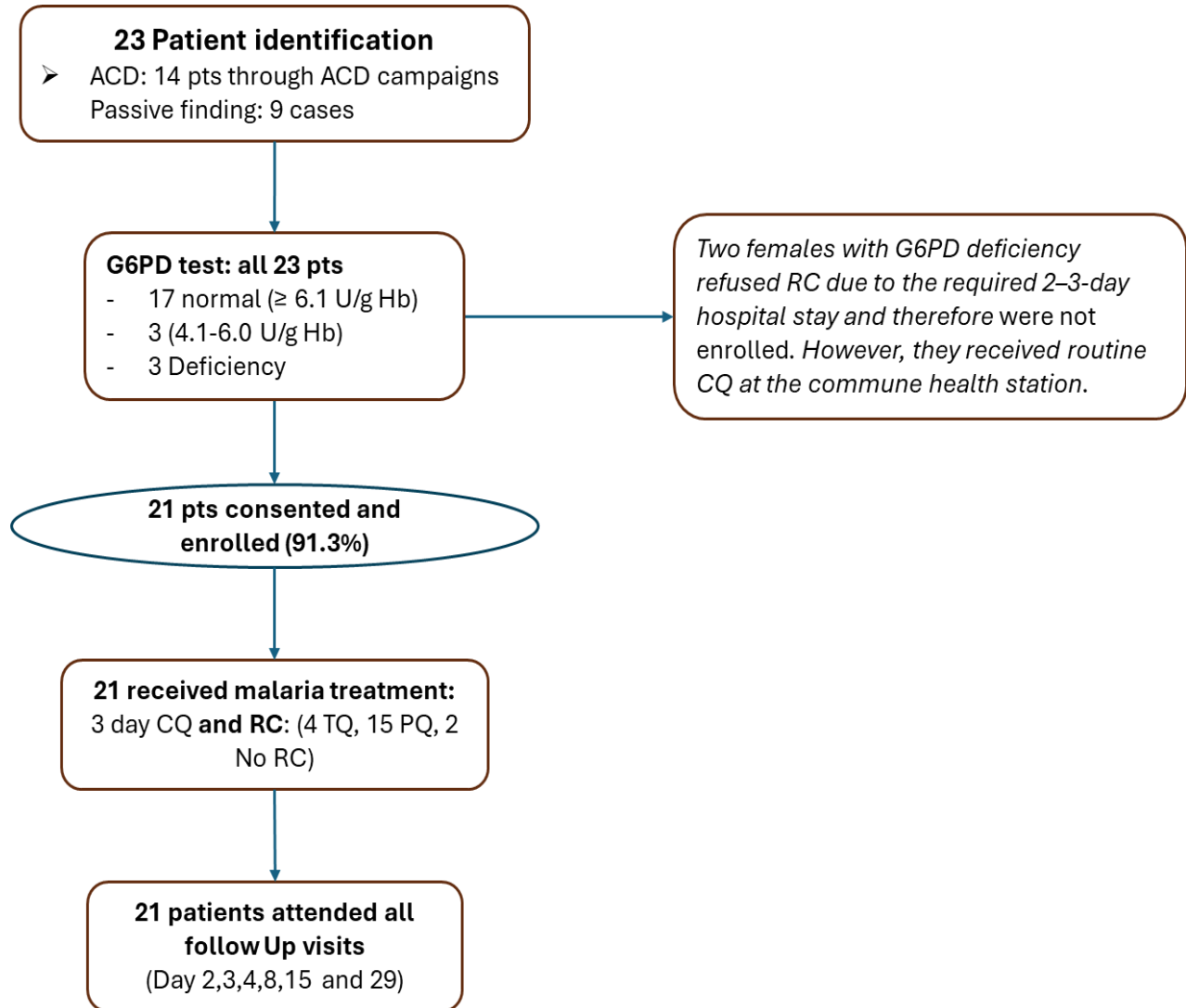


## Participant flow



**Baseline characteristics of malaria cases enrolled in the study**

Categories	Results	Remark
N	21	
Age (mean, SD)	23.1 (16.0)	Min: 5; Max: 55 years old
<b>Gender:</b>		
Male	12 (57.1%)	
Female	9 (42.9%)	
<b>Ethnicity</b>		
Van Kieu	15 (71.4%)	All in Quang Tri province
La Hu	3 (14.3%)	All in Lai Chau province
Kinh	3 (14.3%)	All in Quang Tri province
<b>Facility type, n</b>		
District hospital, n (%)	4 (19.0%)	
Commune health station, n (%)	17 (81.0%)	
<b>Patient finding method, n (%)</b>		
Active case detection	12 (57.1%)	
Passive finding	9 (42.9%)	All 9 cases in Quang tri province with current hotspot
<b>Current malaria symptom n (%)</b>		
Yes	13 (61.9%)	
No	8 (38.1%)	8 (38.1%) cases are asymptomatic
<b>Malaria infection history within 3 months n (%)</b>		
Yes	7 (33.3%)	All infected with <i>P. vivax</i> in Quang Tri province
No	14 (66.7%)	
<b>Hemoglobin g/dL (mean, SD)</b>	13.4 (1.5)	
<b>G6PD activity (U/g Hb), mean, (SD)</b>	7.96 (2.9)	
<b>G6PD status, n (%)</b>		
Normal ( $\geq 6.1$ U/g Hb)	17 (80.9%)	
Intermediate (4.1-6.0) U/g Hb)	3 (14.3%)	1 female and 2 males
Deficiency ( $\leq 4.0$ U/g Hb)	1 (4.8%)	
<b>Breastfeeding Status, n (% of Females)</b>		
Yes	2 (22,2%)	

Categories	Results	Remark
No	7 (77.8%)	
Unknown	0 (0.0%)	
<b>Pregnancy status, n (% of Females)</b>	9	
Yes	0 (0.0%)	
No	9 (100.0%)	
Unknown	0 (0.0%)	
<b>Vivax mono-infection, n (%)</b>	21 (100%)	No mixed infection with <i>P. vivax</i>
<b>Diagnostic method<sup>3</sup>, n (%)</b>		
Microscopy & RDT	15 (71.4%)	
Microscopy only	6 (28.6%)	
RDT only	0 (0.0%)	

#### ***G6PD status and Radical Cure of enrolled P.v patients***

G6PD status	# Patient	TQ	7 Day PQ	14 Day PQ	8 Week PQ	No RC
<b>G6PD activity (<math>\geq 6.1</math>)</b>	17					
Eligible for TQ	9	4	5			
Not eligible for TQ (less than 16 years old)	7		7			
Not eligible for RC	1					1
<b>G6PD activity: 4.1 - 6.0</b>	3					
Male patient	2*		1	1		
Female patient	1			1		
<b>G6PD activity (&lt; 4.1)</b>	1	0	0	0	0	1
<b>Total</b>	<b>21</b>	<b>4</b>	<b>13</b>	<b>2</b>	<b>0</b>	<b>2</b>

\* Male patients with G6PD activity in this range were classified as normal according to the STANDARD G6PD Test instructions for use (Table A, as specified in section 7.2.2.1 in the protocol)

**Patients correctly treated with RC under the new treatment algorithm by overall and sites**

	<b>Overall</b>	<b>Quang Tri</b>	<b>Lai Chau</b>
<b>n/N (%)</b>	<b>21(100%)</b>	<b>18 (85.7%)</b>	<b>3 (14.3%)</b>
Correct RC, n/N (%)	21/ 21 (100%) 95% CI (0.85 - 1.00)	18/18 (100%)	3/3 (100%)
Correct TQ	4/4 (100%)	3/3 (100%)	1/1 (100%)
Correct PQ	15/15 (100%)	14/14 (100%)	1/1 (100%)
- 7-day PQ	13/13 (100%)	13/13 (100%)	0/0
- 14-day PQ	2/2 (100%)	1/1 (100%)	1/1 (100%)
- 8-week PQ	0/0	0/0	0/0
Correct No RC	2/2 (100%)	1/1 (100%)	1/1 (100%)
<b>Facility type, n/N (%)</b>			
District hospital	4/4 (100%)	4/4 (100%)	0/0
Commune Health station	17/17 (100%)	14/14 (100%)	3/3 (100%)

Abbreviations: n, number of participants correctly treated; N, total participants; PQ, primaquine; TQ, tafenoquine.

**Patients correctly treated with RC under the new treatment algorithm by case finding method**

	<b>Overall</b>	<b>Active case detection</b>	<b>Passive case detection</b>
<b>N</b>	<b>21</b>	<b>12 (57.1%)</b>	<b>9 (42.9%)</b>
Correct RC, n/N (%)	21/ 21 (100%)	12/12 (100%)	9/9 (100)
Correct TQ	4/4 (100%)	2/2 (100%)	2/2 (100%)
Correct PQ	15/15 (100%)	9/9 (100%)	6/6 (100%)
- 7-day PQ	13/13 (100%)	7/7 (100%)	6/6 (100%)
- 14-day PQ	2/2 (100%)	2/2 (100%)	0/0
- 8-week PQ	0/0	0/0	0/0
Correct No RC	2/2 (100%)	1/1 (100%)	1/1 (100%)