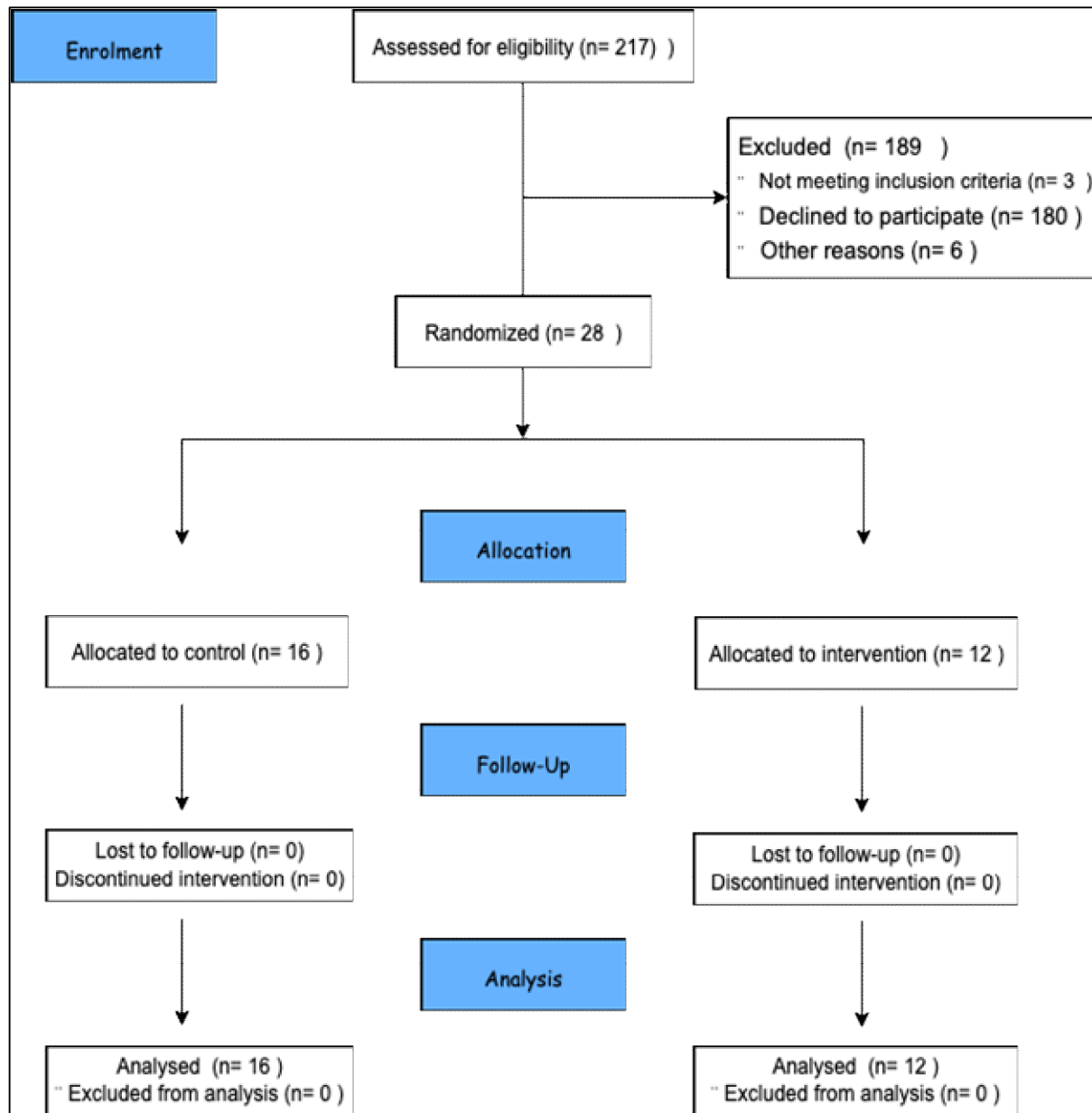


## Participant Flow:



One student with a nursing associate degree was bridging to a nursing bachelor's degree, two students had BLS licensing experience, and six students were unable to attend due to personal reasons related to COVID-19.

## Baseline Characteristics:

Variable	Statistics	
Gender	Male	60.71% (17/28)
	Female	39.28(11/28)
Age	Mean	22.82
	Median	23
	Min, Max	22, 24
Ethnicity	Arab	100% (28/28)
GPA of 4	Mean	2.14
	Median	2.18
	Min, Max	1.07, 3.3

## Outcome Measures:

### 1.1. Skills Performance

Study Time	Study Groups	N	Mean	Standard Deviation	95% CI	
Overall Skills Performance Acquisition (T1) <sup>1</sup>	Intervention	12	14.83	2.44	2.08	6.32
	Control	16	10.62	3.00		
BLS <sup>2</sup> Skills Performance Acquisition (T1)	Intervention	12	8.58	1.37	0.92	3.36
	Control	16	6.43	1.75		
ACLS <sup>3</sup> Skills Performance Acquisition (T1)	Intervention	12	6.25	1.42	0.89	3.22
	Control	16	4.18	1.55		
Overall Skills Performance Retention (T2) <sup>4</sup>	Intervention	12	17.58	1.37	3.51	7.02
	Control	16	12.31	2.98		
BLS Skills Performance Retention (T2)	Intervention	12	10.58	0.79	1.34	3.82
	Control	16	8.00	2.19		
ACLS Skills Performance Retention (T2)	Intervention	12	7.00	1.20	2.01	3.73
	Control	16	4.12	0.88		

<sup>1</sup> T1 stands for timepoint 1 (baseline)

<sup>2</sup> BLS stands for Basic Life Support

<sup>3</sup> ACLS stands for Advanced Cardiac Life Support

<sup>4</sup> T2 stands for timepoint 2 (1<sup>st</sup> post-test)

## 1.2. Knowledge Outcome

Study Time	Study Groups	N	Mean	Standard Deviation
Knowledge Baseline (T1)	Intervention	12	12.50	2.96
	Control	16	9.37	3.26
Knowledge Acquisition (T2)	Intervention	12	15.91	3.06
	Control	16	11.62	3.05
Knowledge Retention (T3) <sup>5</sup>	Intervention	12	15.25	2.37
	Control	16	12.18	3.44

## 1.3. Self-Efficacy

Study Item	Study Group	N	Mean Rank	Sum of Ranks
Level of Self-Efficacy (T1)	Intervention Group	12	15.75	189.00
	Control Group	16	13.56	217.00
Level of Self-Efficacy (T2)	Intervention Group	12	20.04	240.50
	Control Group	16	10.34	165.50

---

<sup>5</sup> T3 stands for timepoint 3 (2<sup>nd</sup> post-test)

## Adverse Events:

There were no adverse events associated with this trial.