

Technology Enhanced integrated AsthMa care (TEAM care): a randomised control trial of technology to improve outcomes among children with asthma

Chief Investigator: Dr Ingrid Wolfe, King's College London

CHILD/YOUNG PERSON INFORMATION SHEET (6-11 years)

Please help us improve asthma care for children

Why have I received this?

We are researchers, from King's College London University and Queen Mary's University London. We work with the nurses and doctors where you live. We find out answers to questions.

We want to see if giving children a device can make their asthma symptoms better.

You have been chosen because you will be seeing a nurse to help you with your asthma. We are inviting you to take part in a project to help us answer these questions.



Before you decide whether you would like to help us, it is important to understand why we are doing this project and what will happen. If you do not understand anything, just ask us.

Do I have to take part?

No, you do not have to take part. You can choose how much of the project you want to be involved in.

What happens if I say no?

Nothing will change. Your doctors and nurses will still look after you even if you decide not to take part.

Would my doctor be informed that I am part of this project?

Yes, the doctor (GP) that you see near your house will be sent a letter explaining the project, unless you tell us not to do so.

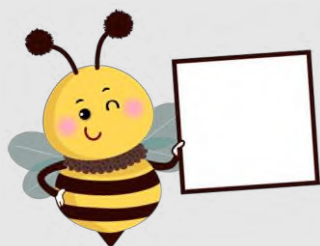


What will happen?

If you choose to take part, you will be put in a project group. There are 3 groups.

Group 1

We will ask you and your parent or the person who looks after you some questions about your asthma and if you have seen a doctor or nurse recently



Group 2

We will ask you and your parent or the person who looks after you some questions about your asthma and if you have seen a doctor or nurse recently

We will give you a special top to put on your asthma inhalers. This top is called a Propeller sensor.



This sensor will remind you to take your inhaler by sending a message to a phone.

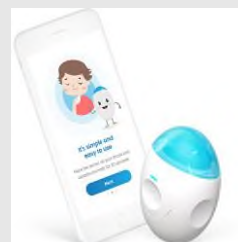
It will record how often you take your inhalers.

It is easy to do and if you get stuck we are here to help

Group 3

We will ask you and your parent or the person who looks after you some questions about your asthma and if you have seen a doctor or nurse recently

We will give you a little recording machine. This machine is called wheezo® and it connects to a phone. It will listen to your breathing each day.



It will help you and your parent/carers decide if you are wheezy.

It is easy to do and if you get stuck we are here to help

Who will know what I've said?



Any information you give to us will be kept safe on special, locked computers.

Only researchers from King's College London and the nurses and doctors caring for you will see your information. We will not share this information with anyone else.

At the end of the project, we will keep all the information you give to us for 25 years.

What do I get for taking part and what are the risks?

This project has been checked by lots of people, to make sure it is alright. We do not expect any problems to taking part in this project. If we find out something we think is important about your health, we will talk to your mum, dad or carer and doctor. You and your family will also get £10 voucher if you decide to take part.

If you want to ask any questions about the project, you can call:

[Insert researcher name and
contact number here]

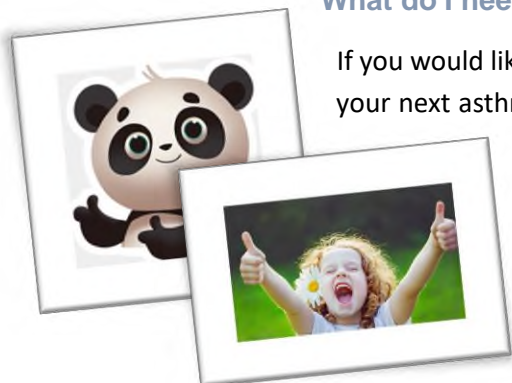
OR

Patient advice and liaison
services (PALS)

020 7188 8801
pals@gstt.nhs.uk
Guy's Hospital, Great Maze
Pond, London, SE1 9RT

What do I need to do to get involved?

If you would like to help us answer our questions, you can let the nurse know when you go to your next asthma appointment. Your mum, dad or carer will have to sign a form to say they understand the project and are happy for you to take part. You will have to sign one too.



What happens if I change my mind?

You may stop being a part of the study at any time, just tell your mum, dad or carer who can contact us.

Thank you for your time and for reading this information sheet