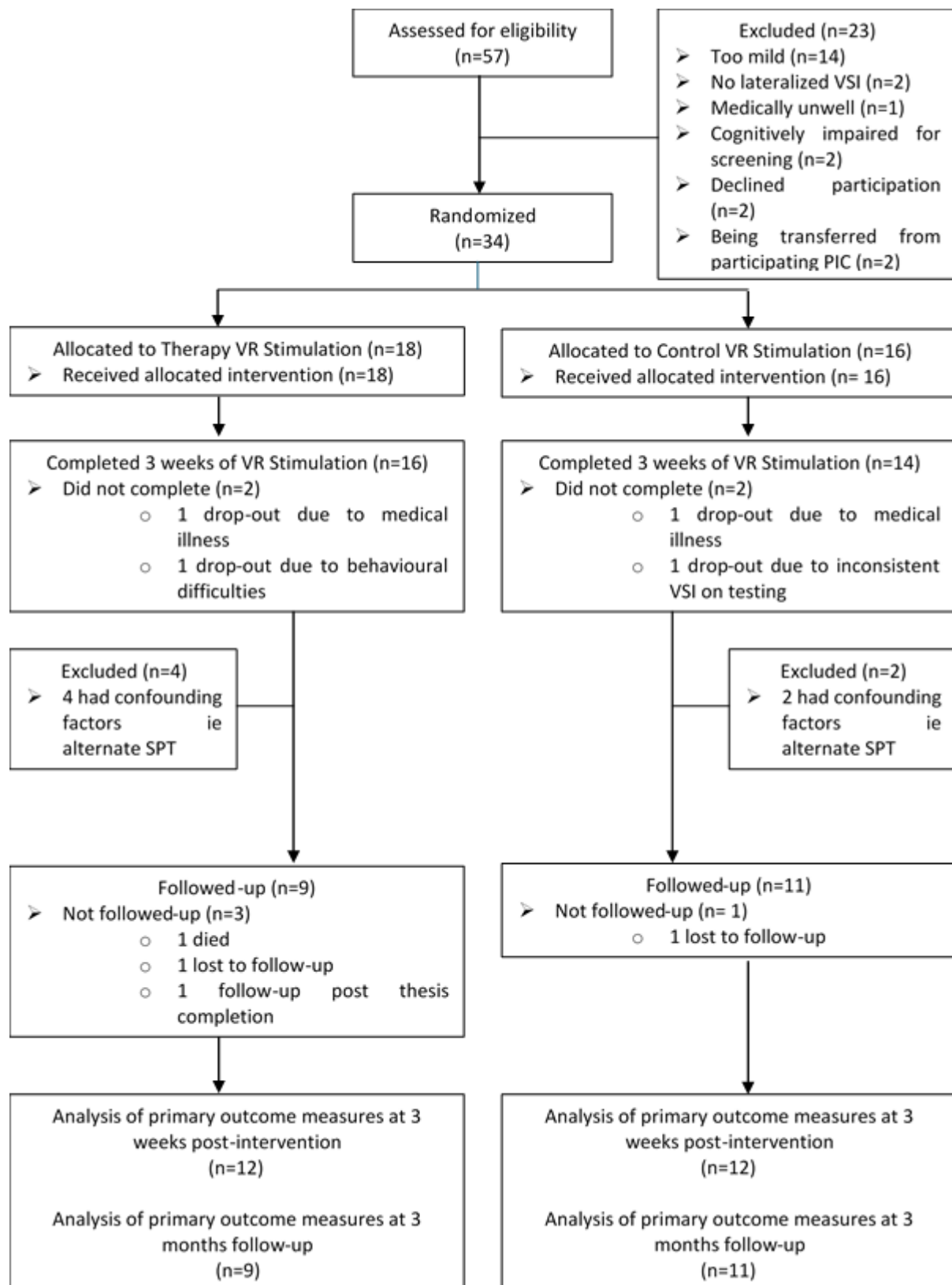


Participant Flow:



Baseline Characteristics:

Variable	Mean±SD / No. (%) Groups		p
	Therapy (n = 12)	Control (n = 12)	
Age (years)	58.1±11.5	57.7±17.4	.95
Gender			.37
Female	5 (41.7)	3 (25.0)	
Male	7 (58.3)	9 (75.0)	
Time since stroke (days)	86.00±54.18	74.67±70.11	.67
Type of stroke			.39
Ischaemic	7 (58.3)	8 (66.7)	
Haemorrhagic	5 (41.7)	4 (33.3)	
Total number of VR stimulation days	14.50 ± 0.92	14.08 ± 1.44	.45
Mean Baseline Stars (total)	18.75±9.55	21.50±10.14	.52
Mean Baseline CBS	17.80±5.59	12.75±5.22	.03

Outcome Measures:

Both primary and secondary outcomes improved significantly more in the therapy group, compared with the control group.

Outcome	Mean (SD)	
	Therapy (n = 12)	Control (n = 12)
Star Cancellation Test Pre-Therapy (primary outcome) Higher score = less neglect	18.75 (9.97)	21.50 (10.60)
Star Cancellation Test Post-Therapy (primary outcome) Higher score = less neglect	42.00 (10.73)	31.42 (16.28)
Catherine Bergego Scale Pre-Therapy (secondary outcome) Lower score = less neglect	17.80 (5.59)	12.75 (5.22)
Catherine Bergego Scale Post-Therapy (secondary outcome) Lower score = less neglect	8.77 (4.97)	9.77 (6.33)

Adverse Events:

There were no adverse events associated with this study.