

**Technology Enhanced integrated AsthMa care (TEAM care): a randomised control trial of  
technology to improve outcomes among children with asthma**

**Chief Investigator: Dr Ingrid Wolfe, King's College London**

**CHILD/YOUNG PERSON INFORMATION SHEET (12-16 years)**

**Please help us learn whether new technologies can improve asthma care for children**

**Why have I received this?**

We are researchers from Kings College London University, Guy's and St Thomas' Hospital, Queen Mary's University London, and the Royal London Hospital and we work with the nurses and doctors where you live. We find out answers to questions.

We want see if giving children a device can make their asthma symptoms better. **We would like to test two devices which can help your healthcare team provide better care for you.**

You have been chosen because you will be seeing a nurse to help with your asthma. We are inviting you to take part in a project to help us answer these questions.

Before you decide whether you would like to help us, it is important to understand why the project is being done and what it will involve. If you do not understand anything, just ask us.

**Do I have to take part?**

No, you do not have to take part if you don't wish to. You can choose how much of the project you want to be involved in.

**What happens if I say no?**

Nothing will change. You will receive the same healthcare even if you decide not to take part.

**Would my doctor be informed that I am part of this project?**

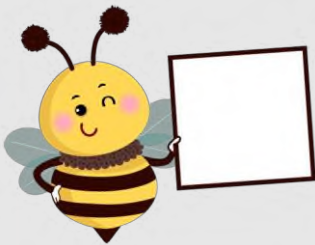
Yes, your local doctor (GP) will be sent a letter explaining the project, unless you tell us not to do so.

## What will happen?

If you choose to take part, you will be put in a project group. There are 3 groups.

### Group 1

We will ask you and your parent or the person who looks after you some questions about your asthma and if you have seen a doctor or nurse recently



### Group 2

We will ask you and your parent or the person who looks after you some questions about your asthma and if you have seen a doctor or nurse recently

We will give you a special top to put on your asthma inhalers. This top is called a Propeller sensor.



The sensor connects to an app on a phone and will remind you to take your inhaler by sending a message to the phone.

It will record how often you take your inhalers.

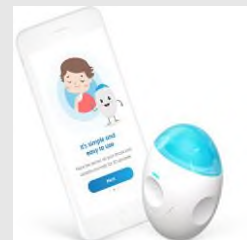
It is easy to do and if you get stuck we are here to help

### Group 3

We will ask you and your parent or the person who looks after you some questions about your asthma and if you have seen a doctor or nurse recently

We will give you a little recording machine that will listen to your breathing each day.

This machine is called wheezo®. Wheezo® detects the presence of wheeze and lets you log symptoms and possible triggers via an app



It will help you and your parent/carer decide if you are wheezy.

It is easy to do and if you get stuck we are here to help

### Who will know what I've said?

Any information you give us will be kept safe on password-protected computers. Only the King's College London researchers and the nurses and doctors caring for you will see your information. We will not share this information with anyone else and it will be kept safe on special, locked computers. At the end of the study we will keep all the information you give us for 25 years.

### What do I get for taking part and what are the risks?

This project has been checked by several people, to make sure it is alright. We do not anticipate any disadvantages to taking part in this project. If we find out something we think is important about your health, we will talk to your mum, dad or carer and doctor.

### If you want to ask any questions about the project, you can call:

[Insert researcher name and  
contact number here]

**OR**

Patient advice and liaison  
services (PALS)

020 7188 8801  
pals@gstt.nhs.uk  
Guy's Hospital, Great Maze  
Pond, London, SE1 9RT

### What do I need to do to get involved?

If you would like to help us answer our questions, you can let the nurse know when you go to your next asthma appointment. Your mum, dad or carer will have to sign a form to say they understand the project and are happy for you to take part and you will have to sign one too.



### What happens if I change my mind?

You may stop being a part of the study at any time, just tell your mum, dad or carer who can contact us.