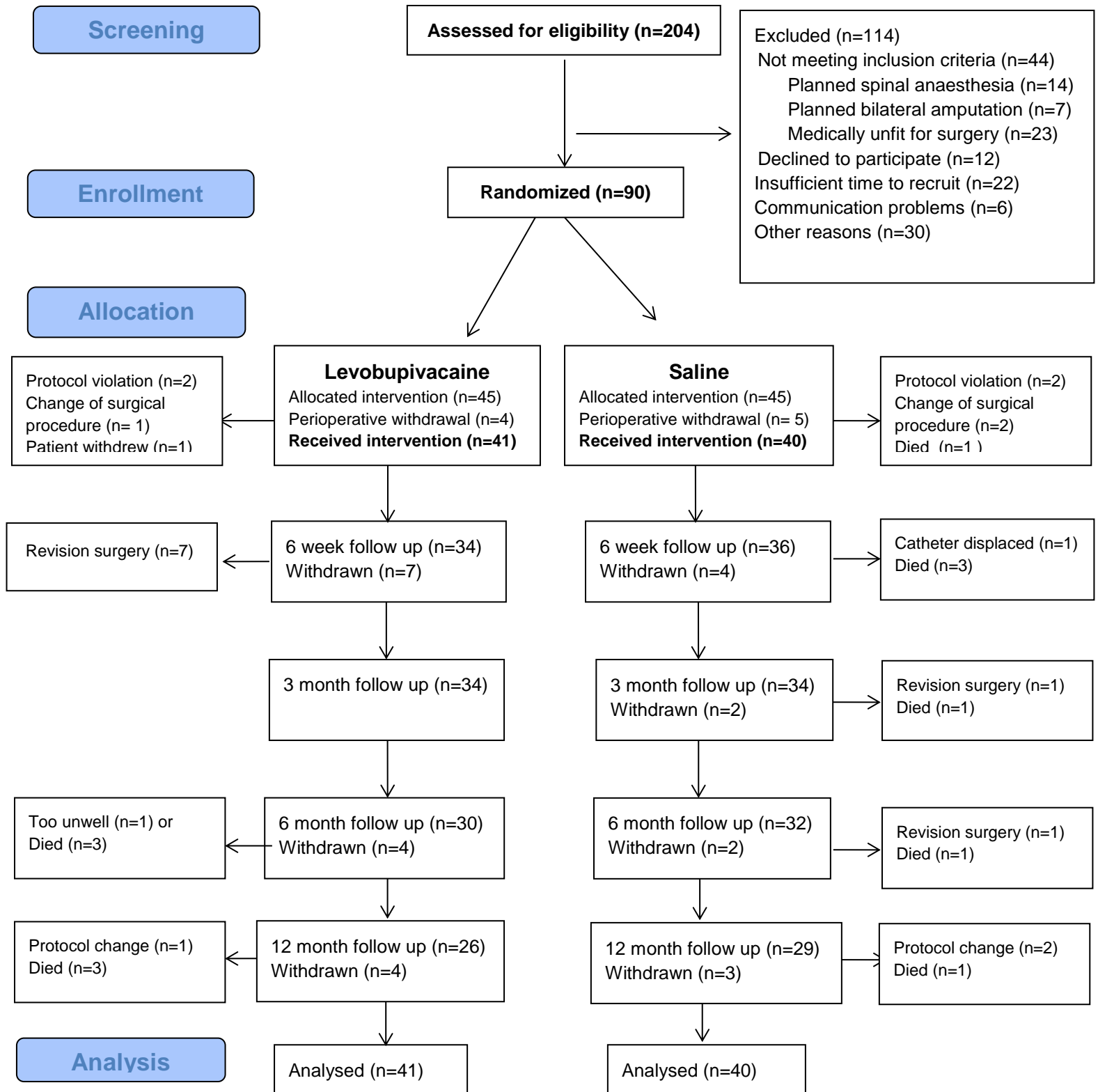


Figure 1. CONSORT Diagram



Patient characteristics, expressed as N (%) or median [range] except for age, which is presented as mean (range).

	Group L – Levobupivacaine 0.125% (n=41)	Group S – Saline 0.9% (n=40)
Male Sex:	24 (59%)	27 (68%)
Age (years)	71 (41-94)	71.5 (44-90)
Amputation:		
Above knee:	24 (59%)	21 (53%)
Below knee:	17 (41%)	19 (47%)
Previous contralateral amputation	0 (0%)	2 (5%)
Coexisting diseases		
Hypertension	19 (46%)	19 (48%)
Insulin-dependent diabetes mellitus	7 (17%)	8 (20%)
Non-insulin-dependent diabetes mellitus	8 (20%)	10 (25%)
Ischaemic heart disease	14 (34%)	15 (38%)
Heart Failure	5 (12%)	6 (15%)
Chronic kidney disease	5 (12%)	7 (18%)
Severe respiratory disease	5 (12%)	5 (13%)
Smoking history:		
Current	12 (29%)	9 (23%)
Previous	24 (59%)	17 (43%)
Never	5 (12%)	14 (35%)
Complications within 6 months:		
Revision surgery	7 (17%)	2 (5%)
Died	6 (15%)	7 (18%)
Surgical wound infections	3 (7%)	7 (18%)
Preoperative analgesia:		
Daily oral morphine dose (mg)	50 [10-645]	40 [5-600]
Gabapentin therapy	7 (17%)	12 (30%)
Duration of preoperative pain (months):		
None	2 (5%)	2 (5%)
<1	12 (29%)	7 (18%)
1-6	10 (24%)	9 (23%)
>6	14 (34%)	19 (48%)
>12	2 (5%)	2 (5%)

Incidence of pain on movement at different time points, classified as: none (VAS 0-4), mild (VAS 5-39), moderate (VAS 40-69) and severe (VAS 70-100). The percentage (%) of patients who complained of moderate or severe phantom limb or stump pain in each group is presented.

Pain/Time point	Group L (n=41)					Group S (n=40)				
	None	Mild	Mod	Severe	%	None	Mild	Mod	Severe	%
Preoperative pain										
Before surgery	4	7	7	19	70.3%	5	6	10	17	71.1%
Phantom limb pain										
24 hours	37	4	0	0	0.0%	35	1	1	1	2.6%
48 hours	37	2	1	1	4.9%	33	2	3	1	10.3%
72 hours	35	1	2	2	10.0%	34	2	2	1	7.7%
96 hours	34	2	2	2	10.0%	32	4	3	0	7.7%
1 week	23	4	5	1	18.2%	25	5	5	2	19.0%
6 weeks	18	6	7	3	29.4%	21	4	2	9	30.6%
3 months	20	6	5	3	23.5%	18	4	6	6	35.3%
6 months	22	1	1	6	23.3%	15	7	3	5	26.7%
Stump pain										
24 hours	7	16	11	7	43.9%	8	7	12	12	61.5%
48 hours	6	17	13	5	43.9%	8	9	10	12	56.4%
72 hours	9	19	8	3	28.2%	12	9	13	5	46.2%
96 hours	9	13	13	4	43.6%	13	10	8	8	41.0%
1 week	5	14	12	2	42.4%	13	12	7	5	32.4%
6 weeks	25	5	4	0	11.8%	20	9	7	0	19.4%
3 months	20	6	5	3	23.5%	26	5	3	0	8.8%
6 months	21	3	3	3	20%	25	4	3	0	9.4%

