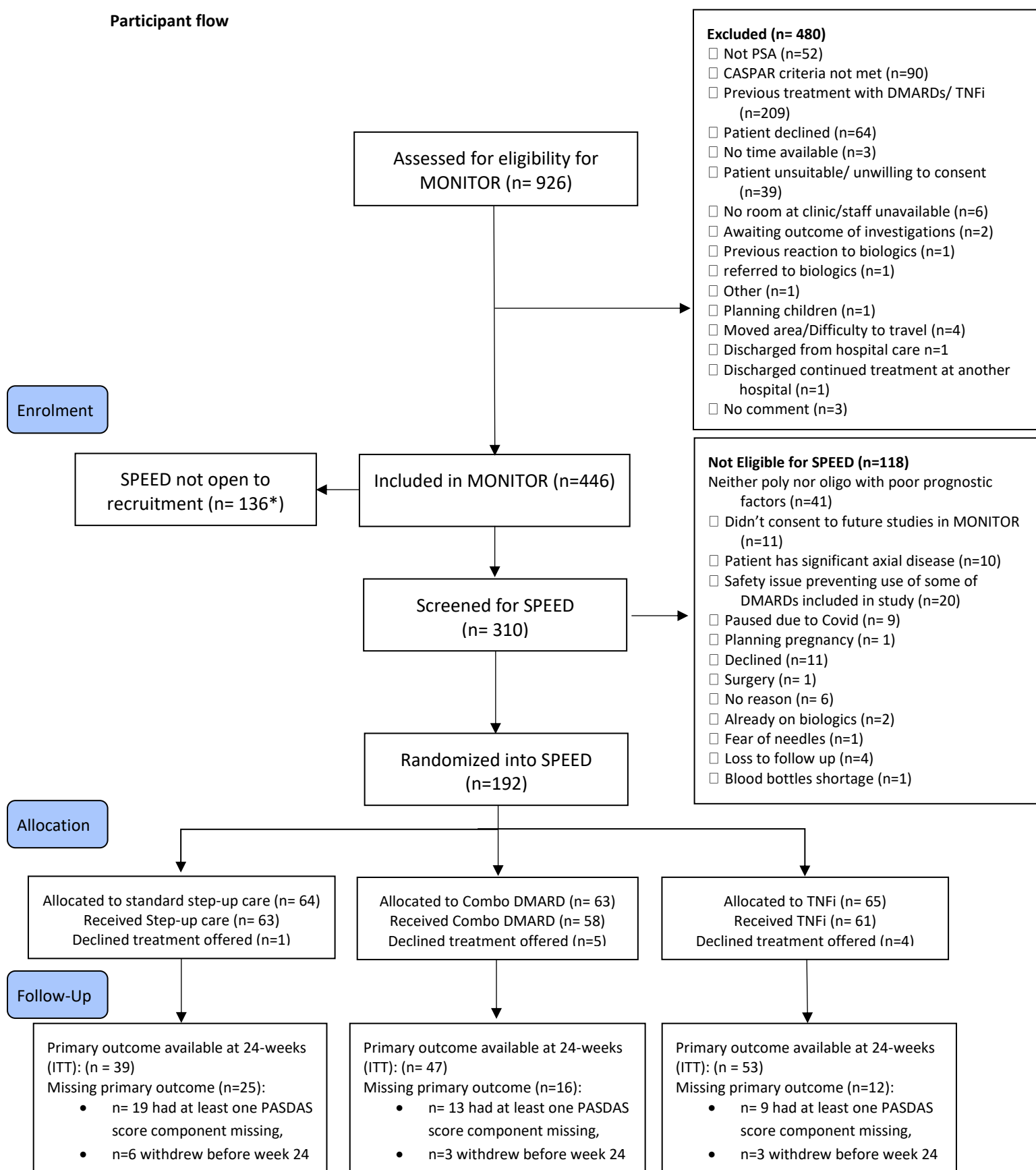


Participant flow



Baseline Characteristics – Baseline characteristics of participants included in the SPEED Trial (first four columns) and baseline characteristics of participants in the MONITOR cohort who were not enrolled in SPEED (last column).

	Standard step-up care N=64	Combo DMARD N=63	TNFi N=65	Total SPEED N=192	Total MONITOR excluding SPEED N = 254
Age (years), n, median [IQR]	64, 50.0 [34.0, 57.0]	63, 51.0 [37.0, 60.0]	65, 48.0 [34.0, 57.0]	192, 49.0 [34.0, 58.0]	254, 42.5 [34.0, 54.0]
Sex, n (%)					
Female	31/64 (48.4%)	33/63 (52.4%)	28/65 (43.1%)	92/192 (47.9%)	122/254 (48.0%)
Male	33/64 (51.6%)	30/63 (47.6%)	37/65 (56.9%)	100/192 (52.1%)	132/254 (52.0%)
BMI (kg/m²), n (%)					
Underweight-normal	13/64 (20.3%)	9/62 (14.5%)	15/63 (23.8%)	37/189 (19.6%)	66/238 (27.7%)
Overweight	21/64 (32.8%)	28/62 (45.2%)	22/63 (34.9%)	71/189 (37.6%)	85/238 (35.7%)
Obese	30/64 (46.9%)	25/62 (40.3%)	26/63 (41.3%)	81/189 (42.8%)	87/238 (36.6%)
TJC, n, median [IQR]	64, 9.0 [5.0, 21.5]	63, 10.0 [5.0, 17.0]	63, 10.0 [6.0, 18.0]	190, 10.0 [5.0, 18.0]	250, 5.0 [2.0, 12.0]
SJC, n, median [IQR]	64, 5.0 [2.0, 8.5]	63, 5.0 [3.0, 9.0]	63, 5.0 [3.0, 9.0]	190, 5.0 [3.0, 9.0]	250, 2.0 [1.0, 5.0]
Presence of psoriasis, n (%)	58/63 (92.1%)	58/62 (93.5%)	57/62 (91.9%)	173/187 (92.5%)	217/237 (91.6%)
PASI score, n, mean (SD)	63, 3.3 (4.7)	61, 2.8 (3.9)	62, 3.4 (3.6)	186, 3.2 (4.1)	228, 4.1 (6.2)
median [IQR]	1.9 [0.3, 3.8]	1.4 [0.6, 3.4]	1.9 [0.7, 5.4]	1.8 [0.6, 3.8]	2.1 [0.4, 4.5]
Presence of enthesitis, n (%)	33/64 (51.6%)	30/63 (47.6%)	33/63 (52.4%)	96/190 (50.5%)	132/227 (58.1%)
LEI, n, mean (SD),	25, 2.0 (1.0)	22, 2.1 (1.3)	23, 1.7 (1.1)	70, 1.9 (1.1)	89, 2.2 (1.3)
median [IQR]	2.0 [1.0, 2.0]	2.0 [1.0, 3.0]	1.0 [1.0, 2.0]	2.0 [1.0, 2.0]	2.0 [1.0, 3.0]
Presence of dactylitis, n (%)	23/64 (35.9%)	21/63 (33.3%)	20/63 (31.7%)	64/190 (33.7%)	48/222 (21.6%)
Dactylitis count, n, mean (SD)	23, 2.1 (1.3)	21, 2.2 (2.1)	20, 2.6 (2.1)	64, 2.3 (1.9)	48, 1.9 (1.1)
median [IQR]	2.0 [1.0, 3.0]	1.0 [1.0, 2.0]	2.0 [1.5, 3.0]	2.0 [1.0, 3.0]	2.0 [1.0, 2.0]
PASDAS, n, mean (SD)	64, 5.6 (1.2)	61, 5.5 (1.3)	61, 5.7 (1.1)	186, 5.6 (1.2)	168, 4.8 (1.4)
median [IQR]	5.5 [5.0, 6.3]	5.6 [4.6, 6.3]	5.8 [5.1, 6.3]	5.6 [4.9, 6.3]	4.9 [3.9, 5.8]
DAPSA, n, mean (SD)	64, 35.0 (18.6)	61, 34.0 (17.5)	63, 34.5 (15.4)	188, 34.5 (17.1)	177, 24.6 (17.6)
median [IQR]	28.5 [21.3, 48.3]	29.6 [22.4, 40.1]	31.1 [24.9, 39.9]	29.5 [22.8, 42.0]	20.2 [13.5, 31.4]
PsAID, n, mean (SD)	64, 5.4 (2.1)	63, 5.3 (2.2)	63, 5.5 (2.0)	190, 5.4 (2.1)	234, 4.7 (2.3)
median [IQR]	6.1 [3.8, 7.0]	5.3 [3.5, 7.2]	6.2 [3.5, 7.2]	5.6 [3.5, 7.1]	4.7 [2.8, 6.6]
HAQ, n, mean (SD)	64, 1.2 (0.7)	63, 1.2 (0.6)	63, 1.2 (0.6)	190, 1.2 (0.6)	236, 0.8 (0.7)
median [IQR]	1.2 [0.8, 1.7]	1.2 [0.8, 1.6]	1.1 [0.8, 1.6]	1.2 [0.8, 1.6]	0.8 [0.2, 1.2]
SF-36, n, mean (SD)	64, 32.6 (9.9)	63, 34.2 (10.6)	63, 30.8 (9.8)	190, 32.5 (10.2)	210, 36.6 (10.6)
median [IQR]	31.8 [25.0, 41.2]	32.5 [26.7, 45.2]	30.3 [23.5, 39.0]	31.3 [24.8, 39.6]	36.9 [28.1, 45.1]
CRP, n, mean (SD)	64, 17.7 (31.6)	62, 20.2 (28.3)	63, 11.5 (16.6)	189, 16.4 (26.4)	181, 12.1 (22.6)
median [IQR]	6.8 [2.8, 18.9]	9.1 [3.6, 22.3]	5.3 [2.0, 14.0]	[2.9, 18.8]	4.0 [2.0, 11.0]
RF negative, n (%)	49/54 (90.7%)	49/53 (92.5%)	49/50 (98.0%)	147/157 (93.6%)	180/191 (94.2%)

DMARD: disease-modifying anti-rheumatic drug; **BMI:** Body Mass Index; **TJC:** Tender Joint Count; **SJC:** Swollen Joint Count; **PASI:** Psoriasis Area and Severity Index; **LEI:** Leeds enthesitis index; **PASDAS:** Psoriatic Arthritis Disease Activity Score; **DAPSA:** Disease Activity index in Psoriatic Arthritis; **PsAID:** Psoriatic Arthritis Impact of Disease; **HAQ:** Health Assessment Questionnaire; **SF-36:** Short Form Health Survey; **CRP:** C-reactive protein; **RF:** Rheumatoid Factor

Outcome measures – Primary outcome and key secondary outcomes at 24 and 48 weeks

Outcome	Time point (weeks)	Standard step-up care N= 64	Combo DMARD N= 63	TNFi N= 65	Comparison ¹	Adjusted mean differences (95% CI)	P-value
PASDAS (Primary outcome)	24	39, 4.7 (1.5), 4.4 [3.9, 5.6]	47, 4.0 (1.5), 4.4 [2.6, 5.2]	53, 3.6 (1.9), 3.5 [2.1, 4.7]	Combo DMARD vs. Step-up care	-0.80 (-1.40, -0.19)	0.0096
n, mean (SD), median [IQR]					TNFi vs. Step-up care	-1.13 (-1.78, -0.49)	0.0006
					TNFi vs. Combo DMARD	-0.44 (-1.10, 0.22)	0.1952
PASDAS, n, mean (SD)	48	45, 4.1 (1.8)	45, 3.8 (1.5)	49, 3.5 (1.7)	Combo DMARD vs. Step-up care	-0.48 (-1.11, 0.16)	0.1444
					TNFi vs. Step-up care	-0.69 (-1.31, -0.07)	0.0298
PSAID, n, mean (SD)	24	43, 3.8 (2.1)	51, 3.5 (2.4)	54, 3.1 (2.5)	Combo DMARD vs. Step-up care	-0.27 (-1.07, 0.54)	0.5187
					TNFi vs. Step-up care	-0.72 (-1.53, 0.09)	0.0795
	48	45, 3.4 (2.5)	46, 3.3 (2.6)	51, 3.0 (2.5)	Combo DMARD vs. Step-up care	-0.33 (-1.15, 0.48)	0.4229
					TNFi vs. Step-up care	-0.52 (-1.33, 0.29)	0.2058
Outcome	Time point (weeks)	Step-up care N= 64	Combo DMARD N= 63	TNFi N= 65	Comparison ¹	Odds Ratio (CI 95%)	P-value
PASDAS (Good vs rest), n (%)	24	3/39 (7.7%)	15/46 (32.6%)	24/52 (46.2%)	Combo DMARD vs. Step-up care	6.22 (1.63, 23.67)	0.0074
					TNFi vs. Step-up care	11.05 (2.98, 40.97)	0.0003
					TNFi vs. Combo DMARD	1.83 (0.79, 4.21)	0.1579
	48	11/45 (24.4%)	15/43 (34.9%)	20/49 (40.8%)	Combo DMARD vs. Step-up care	1.78 (0.70, 4.53)	0.2271
					TNFi vs. Step-up care	2.10 (0.85, 5.18)	0.107
PASDAS (Good and Moderate vs Poor), n (%)	24	20/39 (51.3%)	29/46 (43.0%)	39/52 (75.0%)	Combo DMARD vs. Step-up care	1.81 (0.71, 4.59)	0.2137
					TNFi vs. Step-up care	3.16 (1.18, 8.45)	0.0217
	48	25/45 (55.5%)	31/43 (72.1%)	37/49 (75.5%)	Combo DMARD vs. Step-up care	2.09 (0.81, 5.38)	0.1281
					TNFi vs. Step-up care	2.22 (0.85, 5.80)	0.105
MDA², n (%)	24	4/42 (9.5%)	15/51 (29.4%)	18/54 (33.3%)	-	-	-
	48	11/44 (25.0%)	12/45 (26.7%)	16/51 (31.4%)	-	-	-
PsAID acceptable symptom state (<4)², n (%)	24	28/51 (54.9%)	33/54 (61.1%)		-	-	-
		24/43 (55.8%)					
	48	26/45 (57.8%)	29/46 (63.0%)	32/51 (62.7%)	-	-	-

¹Treatment “B” is the reference group in comparison of “A” vs. “B”.

² No analytical or comparative evaluation was conducted; the report presents only descriptive findings.

DMARD: disease-modifying anti-rheumatic drug; **PASDAS:** Psoriatic Arthritis Disease Activity Score; **PsAID:** Psoriatic Arthritis Impact of Disease; **MDA:** Minimum Disease Activity

Adverse events: Safety outcomes for all randomised participants and treatment satisfaction for medication (at 24 and 48 weeks)

Outcome	Time point (weeks)	Standard step-up care N = 64	Combo DMARD N = 63	TNFi N = 65
Serious adverse events¹	0-48	2/64 (3.1%)	0 (0%)	1/65 (1.5%)
Serious adverse reactions¹	0-48	1/64 (1.6%)	0 (0%)	1/65 (1.5%)
Medication side effects¹				
Headache	0-24	9/54 (16.7%)	11/55 (20.0%)	5/57 (8.8%)
Nausea	0-24	19/54 (35.2%)	20/55 (36.4%)	15/57 (26.3%)
Diarrhea	0-24	6/54 (11.1%)	8/55 (14.5%)	6/57 (10.5%)
Liver abnormalities	0-24	11/54 (20.4%)	19/55 (34.5%)	18/57 (31.6%)
Infections	0-24	3/54 (5.6%)	3/55 (5.5%)	6/57 (10.5%)
Treatment Satisfaction²				
Effectiveness	24			53, 70.1 (24.7)
	48	41, 58.7 (20.1)	49, 61.1 (25.1)	49, 67.5 (25.5)
Side Effects	24	43, 55.9 (20.9)	46, 64.7 (27.3)	53, 87.9 (20.4)
	48	41, 70.6 (27.8)	48, 73.6 (28.5)	49, 83.9 (25.5)
Convenience	24	43, 75.3 (29.7)	46, 81.8 (23.3)	53, 79.7 (16.1)
	48	41, 80.2 (17.0)	49, 79.9 (17.2)	49, 85.0 (15.3)
Global Satisfaction	24	43, 77.3 (20.4)	46, 79.0 (18.1)	53, 74.9 (25.1)
	48	41, 58.7 (23.4)	49, 65.9 (29.0)	49, 72.0 (25.9)
		43, 56.3 (25.8)	46, 71.4 (24.7)	

¹ Reported as n (%)

² Reported as n, mean (SD)