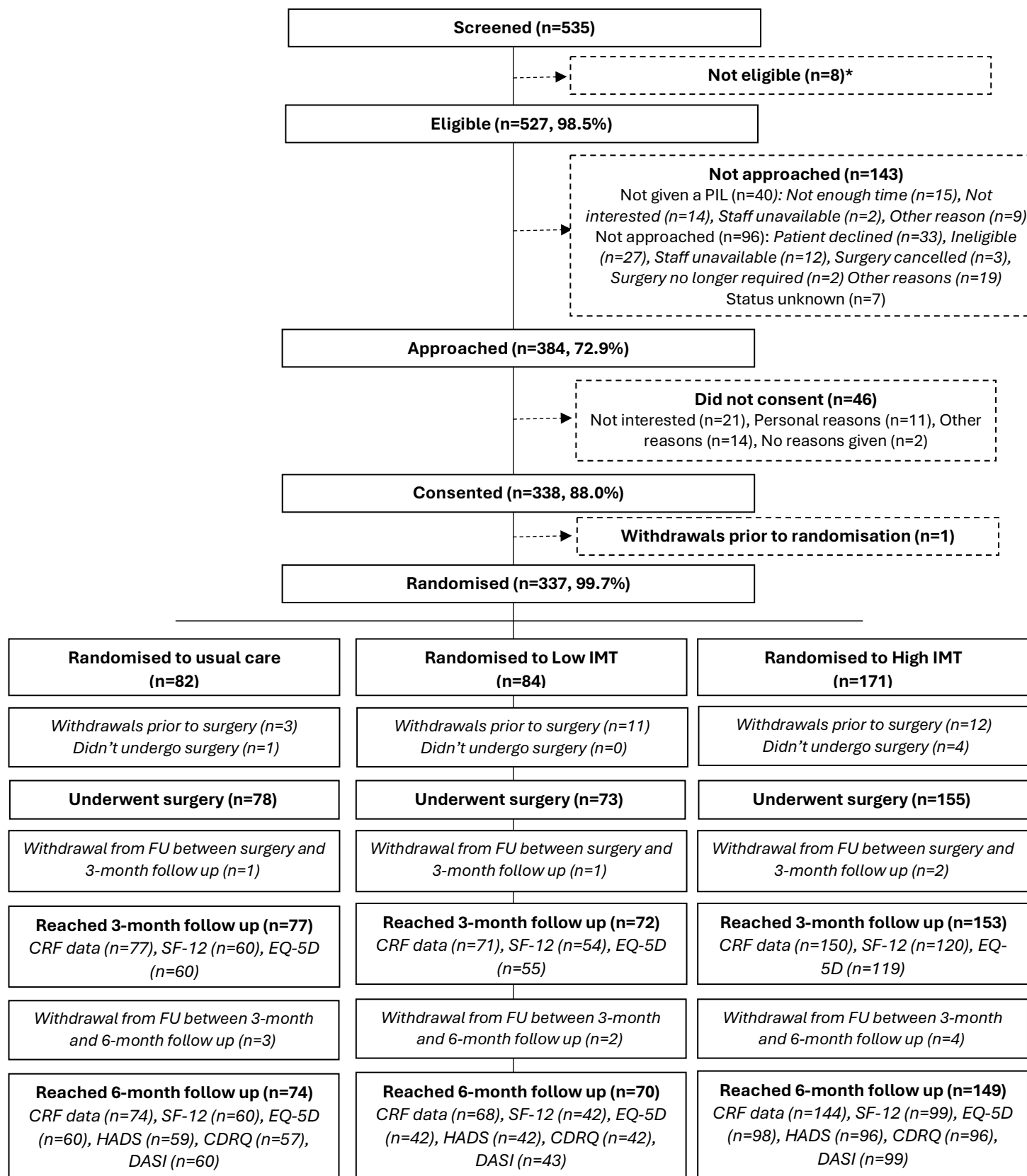


# Inspire basic results report

## 1. Participant Flow



## 2. Baseline Characteristics

**Table 1 Patient demography by trial allocation**

		Usual Care (n=82)	Low IMT (n=84)	High IMT (n=171)	Overall (n=337)
<b>BASELINE CHARACTERISTICS</b>					
Sex	Male	54/82 (65.9%)	50/84 (59.5%)	97/171 (56.7%)	201/337 (59.6%)
	Female	28/82 (34.1%)	34/84 (40.5%)	74/171 (43.3%)	136/337 (40.4%)
Age at randomisation (years) – median (IQR)		69.0 (63.0, 75.0)	68.5 (61.0, 73.5)	67.0 (58.0, 74.0)	68.0 (60.0, 74.0)
Body mass index <sup>a</sup>		27.4 (5.8)	27.1 (5.1)	27.5 (5.1)	27.3 (5.3)
Ethnicity	Other ethnic group	2/82 (2.4%)	1/82 (1.2%)	1/170 (0.6%)	4/334 (1.2%)
	White or caucasian	74/82 (90.2%)	78/82 (95.1%)	162/170 (95.3%)	314/334 (94.0%)
	Black/Black British	1/82 (1.2%)	2/82 (2.4%)	4/170 (2.4%)	7/334 (2.1%)
	Mixed/Multiple ethnic groups	2/82 (2.4%)	0/82 (0.0%)	0/170 (0.0%)	2/334 (0.6%)
	Asian/Asian British	3/82 (3.7%)	1/82 (1.2%)	3/170 (1.8%)	7/334 (2.1%)
Type of surgery	Cardiac	9/82 (11.0%)	10/84 (11.9%)	20/171 (11.7%)	39/337 (11.6%)
	Abdominal	72/82 (87.8%)	73/84 (86.9%)	149/171 (87.1%)	294/337 (87.2%)
	Thoracic	1/82 (1.2%)	1/84 (1.2%)	2/171 (1.2%)	4/337 (1.2%)
<b>GENERAL CO-MORBIDITIES</b>					
Diabetes		17/82 (20.7%)	14/82 (17.1%)	26/170 (15.3%)	57/334 (17.1%)
If yes, treatment	Injected medication	6/17 (35.3%)	4/14 (28.6%)	5/26 (19.2%)	15/57 (26.3%)
	Oral medication	9/17 (52.9%)	9/14 (64.3%)	15/26 (57.7%)	33/57 (57.9%)
	Diet only	2/17 (11.8%)	1/14 (7.1%)	6/26 (23.1%)	9/57 (15.8%)
Ischaemic heart disease		9/82 (11.0%)	9/82 (11.0%)	10/170 (5.9%)	28/334 (8.4%)
Myocardial infarction within 6 months		0/82 (0.0%)	0/82 (0.0%)	0/170 (0.0%)	0/334 (0.0%)
Heart failure		2/82 (2.4%)	2/82 (2.4%)	3/170 (1.8%)	7/334 (2.1%)
Hypertension requiring treatment		30/82 (36.6%)	31/82 (37.8%)	66/170 (38.8%)	127/334 (38.0%)
Peripheral vascular disease		3/82 (3.7%)	1/82 (1.2%)	2/170 (1.2%)	6/334 (1.8%)
Stroke		2/82 (2.4%)	1/82 (1.2%)	3/170 (1.8%)	6/334 (1.8%)
TIA		4/82 (4.9%)	3/82 (3.7%)	3/170 (1.8%)	10/334 (3.0%)
Liver disease (exc cirrhosis)		3/82 (3.7%)	3/82 (3.7%)	7/170 (4.1%)	13/334 (3.9%)
Cirrhosis		0/82 (0.0%)	2/82 (2.4%)	3/170 (1.8%)	5/334 (1.5%)

Renal disease		4/82 (4.9%)	1/82 (1.2%)	4/170 (2.4%)	9/334 (2.7%)
If yes, stage	Stage 1	2/4 (50.0%)	0/1 (0.0%)	2/4 (50.0%)	4/9 (44.4%)
	Stage 2	1/4 (25.0%)	0/1 (0.0%)	2/4 (50.0%)	3/9 (33.3%)
	Stage 3a	0/4 (0.0%)	1/1 (100.0%)	0/4 (0.0%)	1/9 (11.1%)
	Stage 4	1/4 (25.0%)	0/1 (0.0%)	0/4 (0.0%)	1/9 (11.1%)
Condition associated with immunosuppression		3/82 (3.7%)	3/82 (3.7%)	5/170 (2.9%)	11/334 (3.3%)
Immunosuppressant drugs		3/3 (100.0%)	0/3 (0.0%)	2/5 (40.0%)	5/11 (45.5%)
Long-term steroids		1/3 (33.3%)	0/3 (0.0%)	2/5 (40.0%)	3/11 (27.3%)
Oral steroids in previous 6 months		2/3 (66.7%)	0/3 (0.0%)	4/5 (80.0%)	6/11 (54.5%)
<b>RESPIRATORY COMORBIDITIES</b>					
Asthma		9/82 (11.0%)	12/82 (14.6%)	21/170 (12.4%)	42/334 (12.6%)
If yes, any hospital admissions in last 6 months		0/9 (0.0%)	0/12 (0.0%)	0/21 (0.0%)	0/42 (0.0%)
Chronic pulmonary disease		2/82 (2.4%)	8/82 (9.8%)	13/170 (7.6%)	23/334 (6.9%)
If yes, any hospital admissions in last 6 months		0/2 (0.0%)	1/8 (12.5%)	0/13 (0.0%)	1/23 (4.3%)
Interstitial lung disease		1/82 (1.2%)	0/82 (0.0%)	2/170 (1.2%)	3/334 (0.9%)
If yes, any hospital admissions in last 6 months		1/1 (100.0%)	-	0/2 (0.0%)	1/3 (33.3%)
Pulmonary hypertension		0/82 (0.0%)	1/82 (1.2%)	0/170 (0.0%)	1/334 (0.3%)
If yes, any hospital admissions in last 6 months		-	0/1 (0.0%)	-	0/1 (0.0%)
Bronchiectasis		3/82 (3.7%)	1/82 (1.2%)	3/170 (1.8%)	7/334 (2.1%)
If yes, any hospital admissions in last 6 months		0/3 (0.0%)	0/1 (0.0%)	0/3 (0.0%)	0/7 (0.0%)
Obstructive sleep apnoea		7/82 (8.5%)	2/82 (2.4%)	4/170 (2.4%)	13/334 (3.9%)
If yes, any hospital admissions in last 6 months		0/7 (0.0%)	0/2 (0.0%)	0/4 (0.0%)	0/13 (0.0%)
If yes, CPAP?		3/7 (42.9%)	1/2 (50.0%)	4/4 (100.0%)	8/13 (61.5%)
If yes, any hospital admissions in last 6 months		0/3 (0.0%)	0/1 (0.0%)	0/4 (0.0%)	0/8 (0.0%)
COVID-19 (test confirmed)		11/73 (15.1%)	4/71 (5.6%)	13/149 (8.7%)	28/293 (9.6%)
If yes, any hospital admissions in last 6 months		1/11 (9.1%)	1/4 (25.0%)	0/13 (0.0%)	2/28 (7.1%)
<b>SMOKING STATUS</b>					
Smoking	Non-smoker	32/81 (39.5%)	32/82 (39.0%)	79/170 (46.5%)	143/333 (42.9%)
	Ex-smoker >3 months	43/81 (53.1%)	42/82 (51.2%)	72/170 (42.4%)	157/333 (47.1%)
	Ex-smoker <3mths >14days	3/81 (3.7%)	2/82 (2.4%)	5/170 (2.9%)	10/333 (3.0%)
	Current smoker	3/81 (3.7%)	6/82 (7.3%)	14/170 (8.2%)	23/333 (6.9%)
Number of years patient has smoked – median (IQR)		45.0 (30.0, 55.0)	38.5 (27.0, 50.0)	42.5 (30.0, 50.0)	40.0 (30.0, 50.0)
Number of cigarettes per day – median (IQR)		5 (1, 10)	14 (10, 20)	10 (5, 15)	10 (5, 15)

Number of cigars per day – median (IQR)		0 (0, 0)	0 (0, 0)	0 (0, 0)	0 (0, 0)
Number of pipes per day – median (IQR)		0 (0, 0)	0 (0, 0)	0 (0, 0)	0 (0, 0)
Number of other per day – median (IQR)		0 (0, 0)	0 (0, 0)	0 (0, 0)	0 (0, 0)
E-cigarettes		3/80 (3.8%)	6/82 (7.3%)	10/170 (5.9%)	19/332 (5.7%)
<b>CANCER / MALIGNANCY</b>					
Surgery for cancer		62/81 (76.5%)	62/82 (75.6%)	136/170 (80.0%)	260/333 (78.1%)
Primary or secondary tumour	Primary	57/62 (91.9%)	54/62 (87.1%)	120/136 (88.2%)	231/260 (88.8%)
	Secondary	5/62 (8.1%)	8/62 (12.9%)	16/136 (11.8%)	29/260 (11.2%)
Site of malignancy	Lung	1/62 (1.6%)	1/62 (1.6%)	1/136 (0.7%)	3/260 (1.2%)
	Oesophagus	6/62 (9.7%)	6/62 (9.7%)	14/136 (10.3%)	26/260 (10.0%)
	Stomach	2/62 (3.2%)	1/62 (1.6%)	3/136 (2.2%)	6/260 (2.3%)
	Colon	22/62 (35.5%)	18/62 (29.0%)	29/136 (21.3%)	69/260 (26.5%)
	Rectum	4/62 (6.5%)	8/62 (12.9%)	21/136 (15.4%)	33/260 (12.7%)
	Anus	0/62 (0.0%)	2/62 (3.2%)	1/136 (0.7%)	3/260 (1.2%)
	Gall bladder	1/62 (1.6%)	1/62 (1.6%)	1/136 (0.7%)	3/260 (1.2%)
	Biliary tree	0/62 (0.0%)	1/62 (1.6%)	2/136 (1.5%)	3/260 (1.2%)
	Pancreas	10/62 (16.1%)	5/62 (8.1%)	19/136 (14.0%)	34/260 (13.1%)
	Liver	2/62 (3.2%)	2/62 (3.2%)	7/136 (5.1%)	11/260 (4.2%)
	Kidney	0/62 (0.0%)	0/62 (0.0%)	4/136 (2.9%)	4/260 (1.5%)
	Bladder	2/62 (3.2%)	4/62 (6.5%)	10/136 (7.4%)	16/260 (6.2%)
	Endometrium/Ovary	6/62 (9.7%)	8/62 (12.9%)	14/136 (10.3%)	28/260 (10.8%)
	Other	6/62 (9.7%)	5/62 (8.1%)	10/136 (7.4%)	21/260 (8.1%)
Curative or palliative	Curative	53/62 (85.5%)	56/62 (90.3%)	116/136 (85.3%)	225/260 (86.5%)
	Palliative	0/62 (0.0%)	0/62 (0.0%)	1/136 (0.7%)	1/260 (0.4%)
	Don't know	9/62 (14.5%)	6/62 (9.7%)	19/136 (14.0%)	34/260 (13.1%)
Neo-adjuvant treatment in 6 months		23/62 (37.1%)	31/62 (50.0%)	53/136 (39.0%)	107/260 (41.2%)
If yes, radiotherapy		6/23 (26.1%)	9/31 (29.0%)	14/53 (26.4%)	29/107 (27.1%)
If yes, chemotherapy		22/23 (95.7%)	30/31 (96.8%)	52/53 (98.1%)	104/107 (97.2%)
If yes, immunotherapy		1/23 (4.3%)	1/31 (3.2%)	1/53 (1.9%)	3/107 (2.8%)
<b>ARISCAT</b>					
ARISCAT score – mean (SD)		41.9 (7.9)	41.1 (7.1)	42.2 (7.6)	41.8 (7.6)
ARISCAT score – group	26-44	62/82 (75.6%)	62/84 (73.8%)	122/171 (71.3%)	246/337 (73.0%)
	>44	20/82 (24.4%)	22/84 (26.2%)	49/171 (28.7%)	91/337 (27.0%)

Receiving an additional prehabilitation programme as part of usual care		35/68 (51.5%)	37/74 (50.0%)	69/143 (48.3%)	141/285 (49.5%)
Nutritional status	MUST score 0	53/69 (76.8%)	55/66 (83.3%)	120/140 (85.7%)	228/275 (82.9%)
	MUST score 1-2	14/69 (20.3%)	11/66 (16.7%)	18/140 (12.9%)	43/275 (15.6%)
	MUST score >2	2/69 (2.9%)	0/66 (0.0%)	2/140 (1.4%)	4/275 (1.5%)

Missing data (Usual care, Low IMT, High IMT):

<sup>a</sup> Data missing for 3 patients (0, 2, 1)

Data are presented as n/N (%), mean (SD) or median (IQR)

**Abbreviations:** ARISCAT=Assess Respiratory Risk in Surgical Patients in Catalonia, CPAP= Continuous positive airway pressure, IQR=Interquartile range, IMT= Inspiratory muscle training, MUST= Malnutrition Universal Screening Tool, SD=Standard deviation, TIA=Transient ischemic attack

### 3. Outcome Measures

**Table 2 Primary and secondary outcomes**

	Usual care (n=82)	Low IMT (n=84)	High IMT (n=171)	Overall (n=337)
Surgery completed	78/82 (95.1%)	73/84 (86.9%)	155/171 (90.6%)	306/337 (90.8%)
<b>PRIMARY OUTCOME</b>				
Any PPC within 30 days	44/76 (57.9%)	42/72 (58.3%)	105/152 (69.1%)	191/300 (63.7%)
<b>SECONDARY OUTCOMES</b>				
Respiratory infection	9/76 (11.8%)	9/71 (12.7%)	27/151 (17.9%)	45/298 (15.1%)
Respiratory failure	35/75 (46.7%)	30/71 (42.3%)	88/149 (59.1%)	153/295 (51.9%)
Pleural effusion	20/77 (26.0%)	20/71 (28.2%)	34/149 (22.8%)	74/297 (24.9%)
Atelectasis	21/77 (27.3%)	22/71 (31.0%)	44/151 (29.1%)	87/299 (29.1%)
Pneumothorax	1/77 (1.3%)	3/70 (4.3%)	11/148 (7.4%)	15/295 (5.1%)
Bronchospasm	0/77 (0.0%)	3/70 (4.3%)	5/151 (3.3%)	8/298 (2.7%)

Aspiration pneumonitis		0/77 (0.0%)	0/70 (0.0%)	2/148 (1.4%)	2/295 (0.7%)
Invasive ventilation		15/70 (21.4%)	16/68 (23.5%)	35/143 (24.5%)	66/281 (23.5%)
Non-invasive ventilation (including continuous positive airway pressure (CPAP) and/or pressure support (BIPAP))		3/68 (4.4%)	4/66 (6.1%)	18/138 (13.0%)	25/272 (9.2%)
Optiflow (high flow nasal oxygen therapy):					
Prophylactically to prevent a pulmonary complication		2/68 (2.9%)	3/65 (4.6%)	13/136 (9.6%)	18/269 (6.7%)
For treatment of a pulmonary complication		3/68 (4.4%)	6/66 (9.1%)	17/138 (12.3%)	26/272 (9.6%)
Length of ICU stay 18		0.0 (0.0, 0.0)	0.0 (0.0, 0.0)	0.0 (0.0, 1.0)	0.0 (0.0, 1.0)
Length of ICU stay - categorised	On day of surgery	59/78 (75.6%)	55/72 (76.4%)	111/151 (73.5%)	225/301 (74.8%)
	1 day	7/78 (9.0%)	8/72 (11.1%)	13/151 (8.6%)	28/301 (9.3%)
	2 days	6/78 (7.7%)	4/72 (5.6%)	8/151 (5.3%)	18/301 (6.0%)
	3-7 days	5/78 (6.4%)	3/72 (4.2%)	15/151 (9.9%)	23/301 (7.6%)
	>7 days	1/78 (1.3%)	2/72 (2.8%)	4/151 (2.6%)	7/301 (2.3%)
Length of hospital stay 24		7 (5.0, 14.0)	6 (4.0, 10.5)	7 (5.0, 12.5)	7 (5.0, 12.0)
Antibiotic prescription		12/73 (16.4%)	11/69 (15.9%)	29/144 (20.1%)	52/286 (18.2%)
Bronchodilator prescription		0/69 (0.0%)	3/67 (4.5%)	5/138 (3.6%)	8/274 (2.9%)
<b>MIP measurements</b>					
MIP measured - baseline		81/82 (98.8%)	81/84 (96.4%)	167/171 (97.7%)	329/337 (97.6%)
MIP measured - day of surgery		17/82 (20.7%)	13/84 (15.5%)	30/171 (17.5%)	60/337 (17.8%)

MIP - baseline	64.3 (47.1, 89.0)	65.9 (46.2, 87.6)	66.8 (46.8, 85.5)	65.5 (46.8, 86.9)
MIP - day of surgery	55.4 (46.8, 82.4)	75.8 (63.0, 102.5)	80.5 (57.8, 94.2)	72.4 (54.2, 93.4)
MIP - change from baseline 32	1.2 (-5.6, 16.0)	8.1 (4.2, 24.6)	4.5 (-0.3, 18.9)	4.8 (-1.7, 18.9)
<b>Spirometry assessment</b>				
Spirometry performed - baseline	73/82 (89.0%)	67/84 (79.8%)	140/171 (81.9%)	280/337 (83.1%)
Spirometry performed - day of surgery	16/82 (19.5%)	12/84 (14.3%)	28/171 (16.4%)	56/337 (16.6%)
FEV1				
FEV1 - baseline	2.8 (2.1, 3.2)	2.8 (1.9, 3.2)	2.7 (2.1, 3.5)	2.8 (2.1, 3.5)
FEV1 - day of surgery	3.2 (2.5, 3.6)	3.1 (2.0, 3.5)	2.8 (2.1, 3.4)	3.0 (2.3, 3.5)
FEV1 - change from baseline 39	0.1 (-0.1, 0.5)	-0.1 (-0.2, 0.1)	0.0 (-0.2, 0.1)	0.0 (-0.2, 0.2)
FVC				
FVC - baseline	3.9 (3.1, 4.5)	3.8 (2.8, 4.5)	3.6 (3.0, 4.6)	3.7 (3.0, 4.5)
FVC - day of surgery	4.1 (3.6, 4.6)	4.0 (3.1, 4.7)	3.8 (3.1, 4.5)	3.9 (3.3, 4.6)
FVC - change from baseline 43	-0.0 (-0.1, 0.1)	-0.0 (-0.1, 0.1)	-0.0 (-0.2, 0.2)	-0.0 (-0.1, 0.1)
<b>Training load</b>				
Training load - baseline 45		7.7 (4.0)	30.6 (14.0)	23.1 (15.9)
Training load - day of surgery 46	55.0 ()	8.3 (4.8)	39.9 (18.7)	29.8 (21.5)
Training load - change from baseline 47		0.6 (4.3)	9.3 (14.0)	6.5 (12.4)
<b>Mortality</b>				
In-hospital mortality	0/78 (0.0%)	0/73 (0.0%)	0/155 (0.0%)	0/306 (0.0%)

30-day mortality	1/78 (1.3%)	0/73 (0.0%)	0/155 (0.0%)	1/306 (0.3%)
Complications of surgery				
Comprehensive Classification Index 52	12.2 (0.0, 27.2)	0.0 (0.0, 29.6)	12.2 (0.0, 29.6)	8.7 (0.0, 29.6)
Missing data (Usual care, Low IMT, High IMT): 18*Data missing for 5 patients (0, 1, 4). 24*Data missing for 4 patients (0, 1, 3). 32*Data missing for 1 patients (0, 0, 1). 39*Data missing for 3 patients (0, 0, 3). 43*Data missing for 3 patients (0, 0, 3). 45*Data missing for 99 patients (82, 6, 11). 46*Data missing for 131 patients (81, 18, 32). 47*Data missing for 139 patients (82, 19, 38). 52*Data missing for 33 patients (4, 11, 18).				

#### 4. Adverse Events

**Table 3 Expected and anticipated adverse and serious adverse events, by trial allocation**

	Usual Care (n=82)		Low IMT (n=84)		High IMT (n=171)		Overall (n=337)	
	All events	SAEs	All events	SAEs	All events	SAEs	All events	SAEs
	Events/Patients	Events/Patients	Events/Patients	Events/Patients	Events/Patients	Events/Patients	Events/Patients	Events/Patients
<b>Expected events of IMT (during training)</b>								
Any event	3/2 (2.4%)	0/0 (0.0%)	19/11 (13.1%)	0/0 (0.0%)	50/24 (14.0%)	0/0 (0.0%)	72/37 (11.0%)	0/0 (0.0%)
Headache	0/0 (0.0%)	0/0 (0.0%)	0/0 (0.0%)	0/0 (0.0%)	5/5 (2.9%)	0/0 (0.0%)	5/5 (1.5%)	0/0 (0.0%)
Dizziness	1/1 (1.2%)	0/0 (0.0%)	8/4 (4.8%)	0/0 (0.0%)	11/10 (5.8%)	0/0 (0.0%)	20/15 (4.5%)	0/0 (0.0%)
Nausea	0/0 (0.0%)	0/0 (0.0%)	1/1 (1.2%)	0/0 (0.0%)	5/5 (2.9%)	0/0 (0.0%)	6/6 (1.8%)	0/0 (0.0%)
Chest discomfort	1/1 (1.2%)	0/0 (0.0%)	2/2 (2.4%)	0/0 (0.0%)	7/7 (4.1%)	0/0 (0.0%)	10/10 (3.0%)	0/0 (0.0%)
Bronchospasm	0/0 (0.0%)	0/0 (0.0%)	0/0 (0.0%)	0/0 (0.0%)	1/1 (0.6%)	0/0 (0.0%)	1/1 (0.3%)	0/0 (0.0%)
Cough	1/1 (1.2%)	0/0 (0.0%)	3/3 (3.6%)	0/0 (0.0%)	9/8 (4.7%)	0/0 (0.0%)	13/12 (3.6%)	0/0 (0.0%)
Epistaxis	0/0 (0.0%)	0/0 (0.0%)	1/1 (1.2%)	0/0 (0.0%)	0/0 (0.0%)	0/0 (0.0%)	1/1 (0.3%)	0/0 (0.0%)
Pain	0/0 (0.0%)	0/0 (0.0%)	2/2 (2.4%)	0/0 (0.0%)	5/5 (2.9%)	0/0 (0.0%)	7/7 (2.1%)	0/0 (0.0%)
Other	0/0 (0.0%)	0/0 (0.0%)	2/2 (2.4%)	0/0 (0.0%)	7/4 (2.3%)	0/0 (0.0%)	9/6 (1.8%)	0/0 (0.0%)
<b>Anticipated events of surgery &amp; adjuvant chemo/radiotherapy (post-operative)</b>								
Any event	128/46 (56.1%)	22/7 (8.5%)	122/34 (40.5%)	25/7 (8.3%)	309/91 (53.2%)	54/19 (11.1%)	559/171 (50.7%)	101/33 (9.8%)
Myocardial infarction	0/0 (0.0%)	0/0 (0.0%)	1/1 (1.2%)	1/1 (1.2%)	1/1 (0.6%)	0/0 (0.0%)	2/2 (0.6%)	1/1 (0.3%)
Cardiac arrest (requiring	1/1 (1.2%)	1/1 (1.2%)	0/0 (0.0%)	0/0 (0.0%)	0/0 (0.0%)	0/0 (0.0%)	1/1 (0.3%)	1/1 (0.3%)

resuscitation involving ventricular defibrillation/direct current shock)								
Cardiac arrest (requiring external/internal cardiac massage)	1/1 (1.2%)	1/1 (1.2%)	0/0 (0.0%)	0/0 (0.0%)	1/1 (0.6%)	1/1 (0.6%)	2/2 (0.6%)	2/2 (0.6%)
Haemodynamic support (requiring use of any inotropes)	18/18 (22.0%)	1/1 (1.2%)	10/10 (11.9%)	2/2 (2.4%)	31/31 (18.1%)	2/2 (1.2%)	59/59 (17.5%)	5/5 (1.5%)
Haemodynamic support (requiring use of pulmonary artery catheter)	0/0 (0.0%)	0/0 (0.0%)	0/0 (0.0%)	0/0 (0.0%)	1/1 (0.6%)	0/0 (0.0%)	1/1 (0.3%)	0/0 (0.0%)
Haemodynamic support (requiring use of vasodilator)	1/1 (1.2%)	0/0 (0.0%)	0/0 (0.0%)	0/0 (0.0%)	6/6 (3.5%)	0/0 (0.0%)	7/7 (2.1%)	0/0 (0.0%)
Arrhythmia	10/10 (12.2%)	0/0 (0.0%)	6/6 (7.1%)	0/0 (0.0%)	20/18 (10.5%)	3/3 (1.8%)	36/34 (10.1%)	3/3 (0.9%)
Pacing	4/4 (4.9%)	0/0 (0.0%)	3/3 (3.6%)	0/0 (0.0%)	7/7 (4.1%)	3/3 (1.8%)	14/14 (4.2%)	3/3 (0.9%)
Bleeding	1/1 (1.2%)	0/0 (0.0%)	1/1 (1.2%)	0/0 (0.0%)	2/2 (1.2%)	2/2 (1.2%)	4/4 (1.2%)	2/2 (0.6%)
Deep vein thrombosis	0/0 (0.0%)	0/0 (0.0%)	1/1 (1.2%)	1/1 (1.2%)	1/1 (0.6%)	1/1 (0.6%)	2/2 (0.6%)	2/2 (0.6%)
Pulmonary embolus	0/0 (0.0%)	0/0 (0.0%)	1/1 (1.2%)	0/0 (0.0%)	2/2 (1.2%)	1/1 (0.6%)	3/3 (0.9%)	1/1 (0.3%)
Intubation / re- intubation & ventilation	1/1 (1.2%)	1/1 (1.2%)	2/2 (2.4%)	1/1 (1.2%)	6/6 (3.5%)	3/3 (1.8%)	9/9 (2.7%)	5/5 (1.5%)
Tracheostomy	0/0 (0.0%)	0/0 (0.0%)	0/0 (0.0%)	0/0 (0.0%)	1/1 (0.6%)	1/1 (0.6%)	1/1 (0.3%)	1/1 (0.3%)
Initiation of mask continuous positive airway pressure	3/3 (3.7%)	1/1 (1.2%)	3/3 (3.6%)	1/1 (1.2%)	11/11 (6.4%)	2/2 (1.2%)	17/17 (5.0%)	4/4 (1.2%)
Acute respiratory distress syndrome	0/0 (0.0%)	0/0 (0.0%)	0/0 (0.0%)	0/0 (0.0%)	2/2 (1.2%)	1/1 (0.6%)	2/2 (0.6%)	1/1 (0.3%)
Pneumothorax	0/0 (0.0%)	0/0 (0.0%)	4/4 (4.8%)	2/2 (2.4%)	8/8 (4.7%)	2/2 (1.2%)	12/12 (3.6%)	4/4 (1.2%)
Acute respiratory failure	1/1 (1.2%)	1/1 (1.2%)	0/0 (0.0%)	0/0 (0.0%)	6/6 (3.5%)	3/3 (1.8%)	7/7 (2.1%)	4/4 (1.2%)

Pneumonia	1/1 (1.2%)	0/0 (0.0%)	3/3 (3.6%)	1/1 (1.2%)	16/16 (9.4%)	4/4 (2.3%)	20/20 (5.9%)	5/5 (1.5%)
Atelectasis / pulmonary collapse	12/12 (14.6%)	2/2 (2.4%)	16/15 (17.9%)	3/3 (3.6%)	40/40 (23.4%)	3/3 (1.8%)	68/67 (19.9%)	8/8 (2.4%)
Prolonged air leak	0/0 (0.0%)	0/0 (0.0%)	1/1 (1.2%)	1/1 (1.2%)	0/0 (0.0%)	0/0 (0.0%)	1/1 (0.3%)	1/1 (0.3%)
Chylothorax	1/1 (1.2%)	1/1 (1.2%)	1/1 (1.2%)	1/1 (1.2%)	0/0 (0.0%)	0/0 (0.0%)	2/2 (0.6%)	2/2 (0.6%)
Pleural effusion	11/11 (13.4%)	2/2 (2.4%)	19/17 (20.2%)	3/3 (3.6%)	28/26 (15.2%)	3/3 (1.8%)	58/54 (16.0%)	8/8 (2.4%)
Acute aspiration	1/1 (1.2%)	0/0 (0.0%)	0/0 (0.0%)	0/0 (0.0%)	0/0 (0.0%)	0/0 (0.0%)	1/1 (0.3%)	0/0 (0.0%)
Urinary retention	3/3 (3.7%)	0/0 (0.0%)	1/1 (1.2%)	0/0 (0.0%)	6/6 (3.5%)	1/1 (0.6%)	10/10 (3.0%)	1/1 (0.3%)
Acute kidney injury	9/9 (11.0%)	0/0 (0.0%)	5/5 (6.0%)	0/0 (0.0%)	10/10 (5.8%)	3/3 (1.8%)	24/24 (7.1%)	3/3 (0.9%)
New haemofiltration / dialysis	0/0 (0.0%)	0/0 (0.0%)	0/0 (0.0%)	0/0 (0.0%)	2/2 (1.2%)	1/1 (0.6%)	2/2 (0.6%)	1/1 (0.3%)
Retained or fractured ureteric stent	0/0 (0.0%)	0/0 (0.0%)	1/1 (1.2%)	0/0 (0.0%)	1/1 (0.6%)	0/0 (0.0%)	2/2 (0.6%)	0/0 (0.0%)
GI bleed	0/0 (0.0%)	0/0 (0.0%)	1/1 (1.2%)	0/0 (0.0%)	1/1 (0.6%)	0/0 (0.0%)	2/2 (0.6%)	0/0 (0.0%)
Perforation	0/0 (0.0%)	0/0 (0.0%)	0/0 (0.0%)	0/0 (0.0%)	2/2 (1.2%)	0/0 (0.0%)	2/2 (0.6%)	0/0 (0.0%)
Intra-abdominal haematoma	0/0 (0.0%)	0/0 (0.0%)	0/0 (0.0%)	0/0 (0.0%)	2/2 (1.2%)	1/1 (0.6%)	2/2 (0.6%)	1/1 (0.3%)
Leak from any anastomosis, staple line, or localised conduit necrosis	4/4 (4.9%)	1/1 (1.2%)	3/3 (3.6%)	2/2 (2.4%)	4/3 (1.8%)	3/2 (1.2%)	11/10 (3.0%)	6/5 (1.5%)
Ileus	5/5 (6.1%)	0/0 (0.0%)	4/4 (4.8%)	1/1 (1.2%)	7/7 (4.1%)	1/1 (0.6%)	16/16 (4.7%)	2/2 (0.6%)
Feeding J-tube complication	0/0 (0.0%)	0/0 (0.0%)	1/1 (1.2%)	1/1 (1.2%)	0/0 (0.0%)	0/0 (0.0%)	1/1 (0.3%)	1/1 (0.3%)
Delayed gastric emptying	2/2 (2.4%)	0/0 (0.0%)	2/2 (2.4%)	2/2 (2.4%)	1/1 (0.6%)	1/1 (0.6%)	5/5 (1.5%)	3/3 (0.9%)
Ascites	0/0 (0.0%)	0/0 (0.0%)	0/0 (0.0%)	0/0 (0.0%)	2/2 (1.2%)	0/0 (0.0%)	2/2 (0.6%)	0/0 (0.0%)
Liver dysfunction	0/0 (0.0%)	0/0 (0.0%)	1/1 (1.2%)	0/0 (0.0%)	4/4 (2.3%)	0/0 (0.0%)	5/5 (1.5%)	0/0 (0.0%)
New onset diabetes	0/0 (0.0%)	0/0 (0.0%)	0/0 (0.0%)	0/0 (0.0%)	1/1 (0.6%)	0/0 (0.0%)	1/1 (0.3%)	0/0 (0.0%)
Surgical wound infection	3/3 (3.7%)	1/1 (1.2%)	2/2 (2.4%)	0/0 (0.0%)	5/5 (2.9%)	0/0 (0.0%)	10/10 (3.0%)	1/1 (0.3%)
Sepsis	2/2 (2.4%)	0/0 (0.0%)	1/1 (1.2%)	0/0 (0.0%)	3/3 (1.8%)	0/0 (0.0%)	6/6 (1.8%)	0/0 (0.0%)
Urinary tract infection	1/1 (1.2%)	0/0 (0.0%)	2/2 (2.4%)	0/0 (0.0%)	1/1 (0.6%)	0/0 (0.0%)	4/4 (1.2%)	0/0 (0.0%)
Other infections	3/3 (3.7%)	0/0 (0.0%)	4/4 (4.8%)	1/1 (1.2%)	6/6 (3.5%)	1/1 (0.6%)	13/13 (3.9%)	2/2 (0.6%)

Permanent stroke	1/1 (1.2%)	1/1 (1.2%)	1/1 (1.2%)	0/0 (0.0%)	3/3 (1.8%)	1/1 (0.6%)	5/5 (1.5%)	2/2 (0.6%)
Other neurological injury	1/1 (1.2%)	1/1 (1.2%)	0/0 (0.0%)	0/0 (0.0%)	1/1 (0.6%)	0/0 (0.0%)	2/2 (0.6%)	1/1 (0.3%)
Confusion / Delirium	2/2 (2.4%)	0/0 (0.0%)	4/4 (4.8%)	0/0 (0.0%)	16/16 (9.4%)	0/0 (0.0%)	22/22 (6.5%)	0/0 (0.0%)
Acute psychosis / delirium	0/0 (0.0%)	0/0 (0.0%)	1/1 (1.2%)	0/0 (0.0%)	0/0 (0.0%)	0/0 (0.0%)	1/1 (0.3%)	0/0 (0.0%)
Re-operation due to any cause	4/4 (4.9%)	2/2 (2.4%)	0/0 (0.0%)	0/0 (0.0%)	4/3 (1.8%)	3/2 (1.2%)	8/7 (2.1%)	5/4 (1.2%)
Disease recurrence / progression	1/1 (1.2%)	0/0 (0.0%)	0/0 (0.0%)	0/0 (0.0%)	0/0 (0.0%)	0/0 (0.0%)	1/1 (0.3%)	0/0 (0.0%)
Wound dehiscence	3/3 (3.7%)	2/2 (2.4%)	2/2 (2.4%)	0/0 (0.0%)	4/4 (2.3%)	1/1 (0.6%)	9/9 (2.7%)	3/3 (0.9%)
Incisional hernia	1/1 (1.2%)	0/0 (0.0%)	0/0 (0.0%)	0/0 (0.0%)	0/0 (0.0%)	0/0 (0.0%)	1/1 (0.3%)	0/0 (0.0%)
Conversion from minimal access surgery to open surgery	1/1 (1.2%)	1/1 (1.2%)	1/1 (1.2%)	0/0 (0.0%)	3/3 (1.8%)	0/0 (0.0%)	5/5 (1.5%)	1/1 (0.3%)
Chyle leak / chylous ascites	4/4 (4.9%)	1/1 (1.2%)	1/1 (1.2%)	1/1 (1.2%)	0/0 (0.0%)	0/0 (0.0%)	5/5 (1.5%)	2/2 (0.6%)
Bleeding (requiring transfusion)	5/5 (6.1%)	1/1 (1.2%)	3/3 (3.6%)	0/0 (0.0%)	12/12 (7.0%)	0/0 (0.0%)	20/20 (5.9%)	1/1 (0.3%)
Bronchospasm	1/1 (1.2%)	0/0 (0.0%)	1/1 (1.2%)	0/0 (0.0%)	2/2 (1.2%)	0/0 (0.0%)	4/4 (1.2%)	0/0 (0.0%)
Aspiration pneumonitis	0/0 (0.0%)	0/0 (0.0%)	0/0 (0.0%)	0/0 (0.0%)	1/1 (0.6%)	1/1 (0.6%)	1/1 (0.3%)	1/1 (0.3%)
Anaemia	2/2 (2.4%)	0/0 (0.0%)	0/0 (0.0%)	0/0 (0.0%)	3/3 (1.8%)	0/0 (0.0%)	5/5 (1.5%)	0/0 (0.0%)
Thrombocytopenia	0/0 (0.0%)	0/0 (0.0%)	0/0 (0.0%)	0/0 (0.0%)	1/1 (0.6%)	0/0 (0.0%)	1/1 (0.3%)	0/0 (0.0%)
Nausea	1/1 (1.2%)	0/0 (0.0%)	2/2 (2.4%)	0/0 (0.0%)	4/4 (2.3%)	0/0 (0.0%)	7/7 (2.1%)	0/0 (0.0%)
Vomiting	1/1 (1.2%)	0/0 (0.0%)	2/2 (2.4%)	0/0 (0.0%)	3/3 (1.8%)	0/0 (0.0%)	6/6 (1.8%)	0/0 (0.0%)
Constipation	0/0 (0.0%)	0/0 (0.0%)	2/2 (2.4%)	0/0 (0.0%)	0/0 (0.0%)	0/0 (0.0%)	2/2 (0.6%)	0/0 (0.0%)
Sepsis	1/1 (1.2%)	0/0 (0.0%)	0/0 (0.0%)	0/0 (0.0%)	1/1 (0.6%)	1/1 (0.6%)	2/2 (0.6%)	1/1 (0.3%)
Respiratory infection	0/0 (0.0%)	0/0 (0.0%)	0/0 (0.0%)	0/0 (0.0%)	3/3 (1.8%)	0/0 (0.0%)	3/3 (0.9%)	0/0 (0.0%)
Elevated AST / ALT	0/0 (0.0%)	0/0 (0.0%)	2/2 (2.4%)	0/0 (0.0%)	0/0 (0.0%)	0/0 (0.0%)	2/2 (0.6%)	0/0 (0.0%)

**Notes:**

*Data are presented as events/patients (%)*

**Abbreviations:** IMT= Inspiratory muscle training, SAE=Serious adverse event