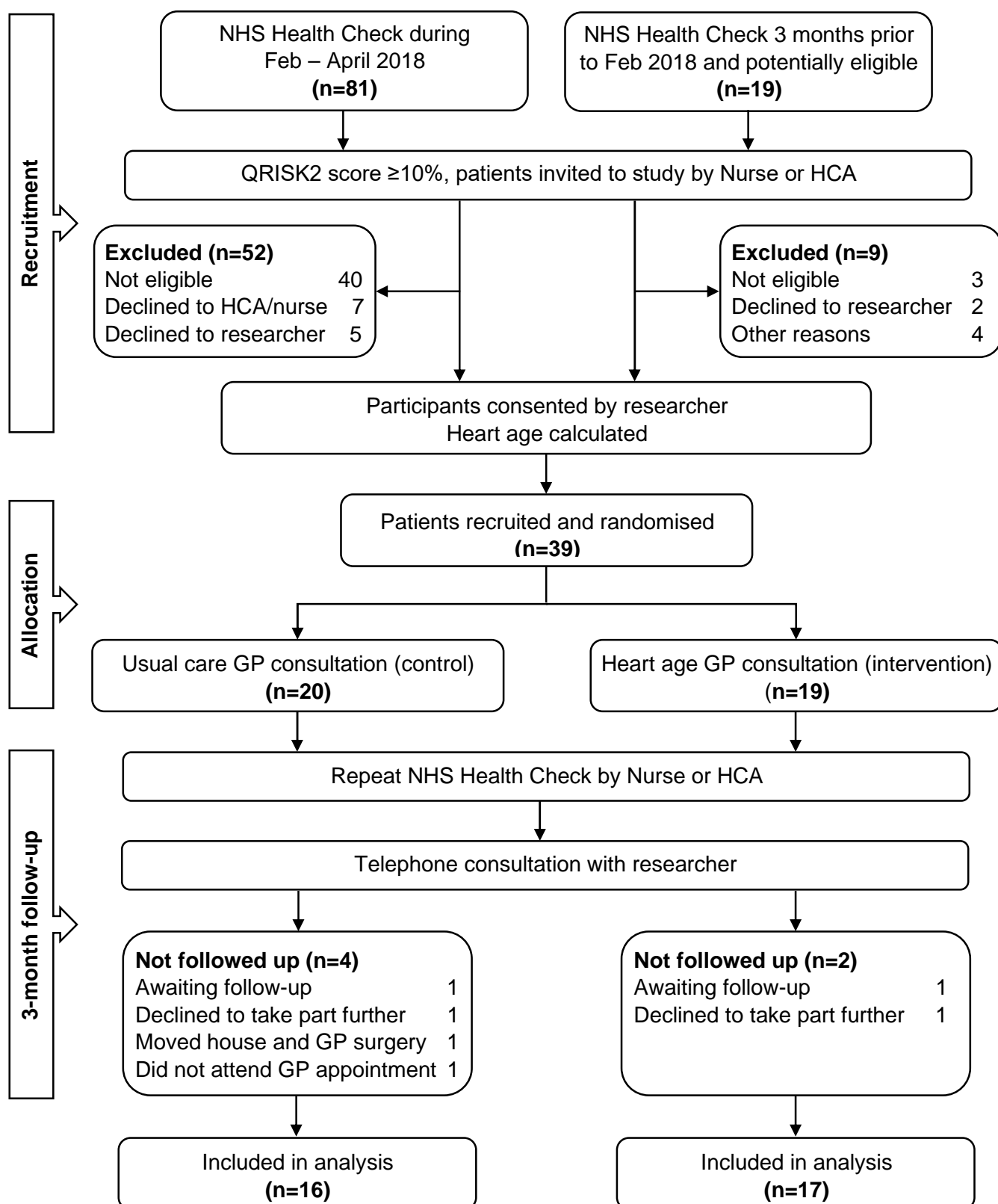


# The effect of using the heart age tool to communicate cardiovascular disease risk to primary care patients in the UK: a randomised feasibility study

**Figure 1:** Flow of participants through study



**Table 1:** Baseline characteristics of participants

	Usual Care group (n=20)	Heart Age group (n=19)
Age	63.6 (8.0)	64.8 (6.8)
Sex		
Male	13 (65)	10 (53)
Female	7 (35)	9 (47)
Employment status		
Employed	4 (20)	5 (27)
Unemployed	2 (10)	1 (5)
Retired	14 (70)	13 (68)
IMD group		
1 – 3	5 (25)	5 (26)
4 – 5	15 (75)	14 (74)
Waist circumference (cm)	97.9 (9.0)	96.8 (12.7)
Height (m)	1.69 (0.1)	1.69 (0.1)
Weight (kg)	81.9 (13.2)	81.9 (17.5)
BMI (kg/m <sup>2</sup> )	28.7 (4.1)	28.4 (4.3)
*Alcohol (units/week)	0 (10)	0 (2)
Smoking status		
Current smoker	7 (35)	6 (32)
Ex-smoker	5 (25)	2 (10)
Never smoked	8 (40)	11 (58)
GPPAQ		
Moderately active or active	16 (80)	14 (74)
Moderately inactive or inactive	4 (20)	5 (26)
≥ 5 Fruit and Veg / day		
Yes	10 (53)	9 (47)
No	9 (47)	10 (53)
Family history of CVD		
Yes	9 (45)	10 (53)
No	11 (55)	9 (47)
Systolic BP (mmHg)	141 (14.9)	139 (13.6)
Diastolic BP (mmHg)	85 (6.8)	82 (10.5)
Total cholesterol (mmol/L)	5.5 (1.0)	5.7 (1.6)
HDL cholesterol (mmol/L)	1.3 (0.4)	1.3 (0.4)
TC:HDL ratio	4.5 (1.6)	4.5 (1.4)
*Triglycerides (mmol/L)	1.7 (2.1)	2.2 (1.1)
*HbA1c (mmol/mol)	39 (5.0)	38 (4.5)
Co-morbidities		
0	11 (55)	12 (63)
≥ 1	9 (45)	7 (37)
QRISK2 score	18.5 (6.1)	18.9 (6.8)
Heart age (years)	79 (12)	79 (11)

Values are mean (SD) or n (%). \*Values are median (IQR) where data are not normally distributed

**Table 2:** Acceptability of heart age to GPs (n=8)

<b>How much do you agree that heart age was helpful in...</b>	<b>Strongly disagree</b>	<b>Disagree</b>	<b>Neutral</b>	<b>Agree</b>	<b>Strongly agree</b>
Your communication of CVD risk to patients				5	3
Patients' understanding of CVD risk			1	3	4
Motivating patients towards healthy behaviour change			2	2	4
Your discussion about starting a statin			1	4	3
Completing the consultation within 10 minutes		2	2	1	3

**Table 3:** Acceptability of heart age to patients (n=17)

<b>How much do you agree with the following statements about heart age?</b>	<b>Strongly disagree</b>	<b>Disagree</b>	<b>Neutral</b>	<b>Agree</b>	<b>Strongly agree</b>
Useful			12%	29%	59%
Understandable			6%	65%	29%
Trustworthy			41%	35%	24%
Motivating			12%	47%	41%
Important in helping you decide about reducing your risk of CVD		6%	6%	29%	59%

**Table 4:** Characteristics of participants followed up and not followed up

	<b>Followed up (n=33)</b>	<b>Not followed up (n=6)</b>
Age mean (sd)	65.9 (5.7)	54.5 (8.4)
Sex n (%)		
Male	19 (58)	4 (67)
Female	14 (42)	2 (33)
Employment status n (%)		
Employed	6 (18)	3 (50)
Unemployed	1 (3)	2 (33)
Retired	26 (79)	1 (17)
IMD group		
1 – 3	10 (30)	0
4 – 5	23 (70)	6 (100)
Waist circumference (cm) mean (sd)	96.6 (11.0)	101.3 (9.6)
Height (m) mean (sd)	1.68 (0.09)	1.73 (0.05)
Weight (kg) mean (sd)	80.7 (14.6)	88.5 (18.5)
BMI (kg/m <sup>2</sup> ) mean (sd)	28.4 (3.8)	29.5 (5.8)
*Alcohol (units/week) median (IQR)	0 (2.5)	5 (11.5)
Smoking status n (%)		
Current smoker	9 (27)	4 (67)
Ex-smoker	7 (21)	0
Never smoked	17 (52)	2 (33)
GPPAQ mean (sd)		
Moderately active or active	26 (79)	4 (67)
Moderately inactive or inactive	7 (21)	2 (33)
≥ 5 Fruit and Veg / day n (%)		
Yes	15 (47)	4 (67)
No	17 (53)	2 (33)
Family history of CVD n (%)		
Yes	14 (42)	4 (67)
No	19 (58)	2 (33)
Systolic BP (mmHg) mean (sd)	140 (14.3)	138 (13.8)
Diastolic BP (mmHg) mean (sd)	83 (8.3)	90 (9.3)
Total cholesterol (mmol/L) mean (sd)	5.5 (1.3)	6.0 (0.8)
HDL cholesterol (mmol/L) mean (sd)	1.4 (0.4)	1.1 (0.3)
TC:HDL ratio mean (sd)	4.3 (1.3)	5.6 (1.6)
*Triglycerides (mmol/L) median (IQR)	1.9 (0.9)	3.2 (2.7)
*HbA1c (mmol/mol) median (IQR)	38 (3.0)	40 (5.5)
Co-morbidities n (%)		
0	19 (58)	4 (67)
≥ 1	14 (42)	2 (33)
QRISK2 score median (IQR)	19.1 (6.6)	15.6 (5.2)
Heart age (years) median (IQR)	80 (12)	74 (13)

**Table 5:** Message delivered to participants in heart age consultations (n=16)

<b>Message delivered to participants</b>	<b>n (%)</b>
Heart age stated separately	11 (69)
Heart age stated separately or as part of meaning	16 (100)
One part of heart age meaning	14 (88)
Both parts of heart age meaning	11 (69)
Full standardised message	6 (38)

**Table 6:** Change in characteristics from baseline to 3 months follow-up

Characteristic	All (n = 29–33)	Usual Care group (n = 14–16)	Heart age group (n = 15–17)
Waist circumference (cm)	-1.63 ± 5.85 (-3.82 to 0.55)	-1.21 ± 7.45 (-5.52 to 3.09)	-2.0 ± 4.22 (-4.25 to 0.25)
Weight (kg)	-1.70 ± 2.28 (-2.51 to -0.89)	-1.42 ± 2.34 (-2.66 to -0.17)	-1.96 ± 2.27 (-3.13 to -0.79)
BMI (kg/m <sup>2</sup> )	-0.55 ± 0.83 (-0.84 to -0.25)	-0.49 ± 0.81 (-0.92 to -0.06)	-0.61 ± 0.87 (-1.05 to -0.16)
Systolic BP (mmHg)	-8.5 ± 15.2 (-14.0 to -3.01)	-9.88 ± 17.2 (-19.0 to -0.71)	-7.13 ± 13.4 (-14.3 to 0.03)
Diastolic BP (mmHg)	-2.41 ± 8.80 (-5.58 to 0.77)	-4.44 ± 10.4 (-9.99 to 1.11)	-0.38 ± 6.53 (-3.86 to 3.11)
Active or moderately active (%)	7.5	1.3	13.5
≥ 5 fruit and veg / day (%)	10.6	3.62	17.3
TC:HDL ratio (mmol/L)	-0.45 ± 1.10 (-0.84 to -0.06)	-0.25 ± 0.95 (-0.76 to 0.26)	-0.64 ± 1.22 (-1.27 to -0.01)
Triglycerides (mmol/L)	-0.22 ± 1.16 (-0.69 to 0.24)	0.01 ± 1.22 (-0.73 to 0.74)	-0.45 ± 1.09 (-1.12 to 0.21)
HbA1c (mmol/mol)	0.55 ± 1.65 (-0.06 to 1.15)	-0.07 ± 1.1 (-0.68 to 0.54)	1.13 ± 1.89 (0.12 to 2.13)
QRISK2 score	-2.03 ± 3.52 (-3.28 to -0.78)	-1.51 ± 3.06 (-3.14 to 0.12)	-2.53 ± 3.93 (-4.55 to -0.51)
Heart age (years)	-1.7 ± 4.38 (-3.25 to -0.15)	-1.25 ± 4.09 (-3.43 to 0.93)	-2.12 ± 4.72 (-4.54 to 0.31)

Values are mean ± SD (95% CI) unless stated otherwise.

\*Values are median (IQR) where data are not normally distributed.

**Table 7:** Change in risk factors between usual care and heart age groups

<b>Characteristic</b>	<b>Mean difference (95% CI) or difference in proportions</b>
Waist circumference (cm)	0.87 (-3.56 to 5.29)
Weight (kg)	0.54 (-1.10 to 2.18)
BMI (kg/m <sup>2</sup> )	0.12 (-0.48 to 0.71)
Systolic BP (mmHg)	-2.75 (-13.9 to 8.39)
Diastolic BP (mmHg)	-4.06 (-10.3 to 2.22)
Active or moderately active (%)	12.2
≥ 5 fruit and veg / day (%)	13.7
TC:HDL ratio (mmol/L)	0.39 (-0.39 to 1.17)
QRISK2 score	1.02 (-1.49 to 3.54)
Heart age (years)	0.87 (-2.28 to 4.01)

**Table 8:** Number and type of lifestyle changes made

<b>Lifestyle changes made</b>	<b>Usual care group (n=16)</b>	<b>Heart age group (n=17)</b>
Nil	4 (25)	6 (35)
Diet alone	8 (50)	3 (18)
Alcohol alone	2 (13)	0
Physical activity alone	1 (6)	3 (18)
Diet and physical activity	0	4 (23)
Diet and smoking	1 (6)	1 (6)

Values are n (%).

**Table 9:** Type of dietary changes made (n=17)

<b>Change made</b>	<b>n (%)</b>
Smaller portions	3 (6.8)
White-->Brown	3 (6.8)
Less red meat	3 (6.8)
Fewer sugary treats	5 (11.4)
Fewer starchy carbohydrates	7 (15.9)
More fruit and/or veg	9 (20.5)
Less added sugar	3 (6.8)
More fish or chicken	3 (6.8)
Less butter or cheese	3 (6.8)
Other	5 (11.4)

**Table 10:** Use of statin medication

	<b>Usual care group (n=16)</b>	<b>Heart age group (n=17)</b>
On statin at baseline	1 (6)	2 (12)
Started statin at GP appointment	3 (19)	4 (23)
Started statin at follow-up	1 (6)	2 (12)
Statin declined	11 (69)	8 (47)
Statin not indicated	0	1 (6)