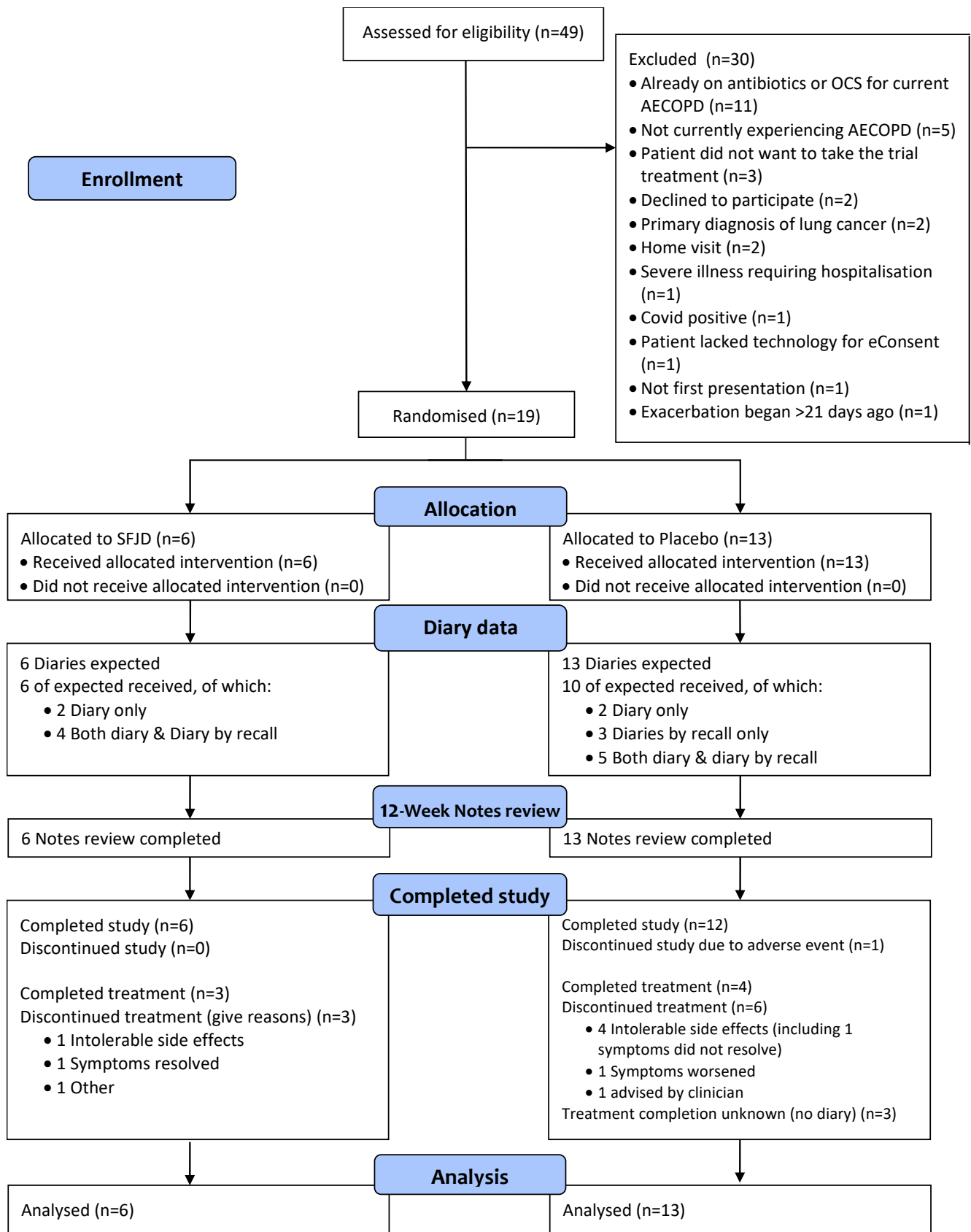


## Participant flow



## Baseline characteristics

	SFJD (n = 6)	Placebo (n = 13)
Median age (IQR)	71 (68–79)	71 (68–77)
Women—n (%)	2 (33.3%)	6 (46.2%)
White ethnicity	6 (100%)	7/7 (100%)
Current smokers	3 (50.0%)	3/7 (42.9%)
Mean years of smoking (SD)	45.0 (20.25)	45.3 (11.64)
Any relevant past medical history—n (%)	4 (66.7%)	9 (69.2%)
Asthma—n (%)	1 (16.7%)	4 (30.8%)
Cardiovascular disease—n (%)	2 (33.3%)	1 (7.7%)
Hypertension—n (%)	4 (66.7%)	5 (38.5%)
Diabetes—n (%)	3 (50.0%)	3 (23.1%)
Median duration (days) of current exacerbation (IQR)	6.5 (3.0–14.0)	7.0 (3.0–14.0)
Increased sputum purulence—n (%)	5 (83.3%)	10 (76.9%)
Increased sputum volume—n (%)	4 (66.7%)	9 (69.2%)
Increased breathlessness—n (%)	5 (83.3%)	12 (92.3%)
Mean temperature (SD)	36.6 °C (0.47)	36.6 °C (0.36)
Median SpO2 (IQR)	96.0% (95.0–97.0)	97.0% (95.0–97.0)
Mean CAT score (SD)	23.5 (7.82)	29.3 (7.30)
Mean EXACT-PRO score (SD)	50.3 (10.11)	53.6 (9.74)

## Outcome measures

Outcome measure	SFJD (n = 6)	Placebo (n = 13)
Trial diary returned—n (%)	6 (100%)	7 (53.8%)
Proportion of trial diary completed—n (%)		
• Complete Diaries (7 days confirmed symptom resolution)	5 (83.3%)	6 (46.2%)
• Complete Diaries (2 days confirmed symptom resolution)	1 (16.7%)	1 (7.7%)
• Incomplete Diaries with useable antibiotic use data	0 (0%)	3 (23.1%)
• No Diary returned	0 (0%)	3 (23.1%)
Mean number of days on which complete diary data was entered (SD)	13.7 (9.07)	13.7 (8.85)
No of patients providing complete useable endpoint data at 28 days—n (%) <sup>1,4</sup>	0 (0%)	0 (0%)
• Complete useable trial medication data	3 (50.0%)	3 (23.1%)
• Complete useable antibiotic data	5 (83.3%)	9 (69.2%)
• Complete useable steroid data	2 (33.3%)	2 (15.4%)
• Complete useable symptom resolution data	6 (100%)	8 (61.5%)
• Complete useable EXACT-PRO data	3 (50.0%)	2 (15.4%)
• Complete useable CAT data	4 (66.7%)	4 (30.8%)

**Serious adverse events**

Date of Onset	Treatment Arm	MedDRA Preferred Term	Related	Expected	Overall Assessment
21FEB2022	Placebo	Hip Fracture	Unrelated	N/A	SAE
25MAY2022	Placebo	Tachycardia	Related	Unexpected	SAE
26MAY2022	Placebo	Lower respiratory tract infection	Unrelated	N/A	SAE