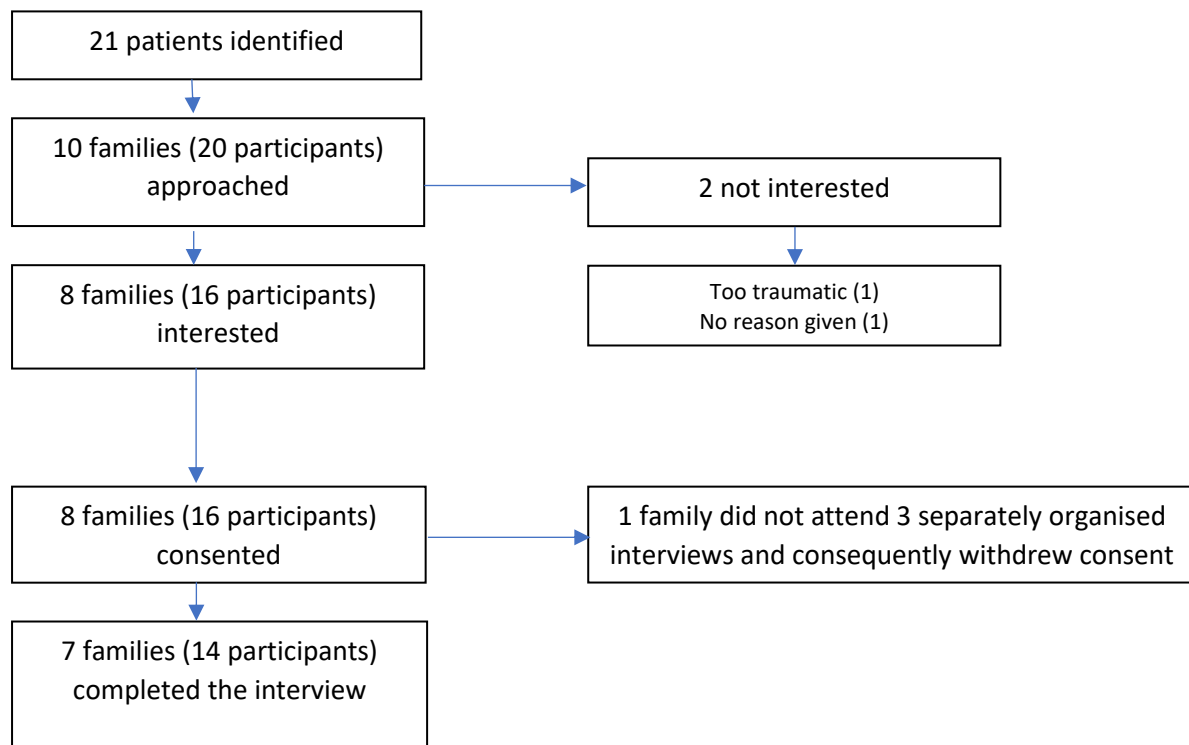


## ISRCTN 14078645 results summary

### Participant flow



A total of 7 families were enrolled and completed the study.

### Baseline Characteristics

The ages of the CYP (children and young people) at the time of injury varied from 7 years old to 15 years old. Each family incidentally accessed at least two different services for acute management of the TDI (traumatic dental injury) and there was a variation of type of injury, the day and time of the week varied and the setting in which the injury occurred also varied.

	Children involved	Parent involved
Age (mean in years)	79 (111.2) (range 7-15)	n/a
Sex (female)	57%	86%
Ethnic origin	White British 100% (n=7)	White British 100% (n=7)
Interview format	3 face to face, 4 video format	3 face to face, 4 video format
Injury occurring in hours/OOH	1 In hours: 6 OOH	
Cause of injury	Playing outside with friends Fell off monkey bars at a friend's house	

	<p>Fell at skate park onto concrete</p> <p>Cricket practice, ball to face</p> <p>Slipped over wellies at adventure park</p> <p>Slipped onto a pole at skate park</p> <p>Fainted</p>	
Classification of injury	<p>Avulsion</p> <p>Intrusion and ED fracture</p> <p>Lateral luxation and ED fracture</p> <p>Extrusion</p> <p>Avulsion</p> <p>Intrusion and ED fracture</p> <p>Extrusion</p>	

### Outcome measures

Four key themes emerged; family frustration, psychological impact, information and advice on management of TDIs, and the perceived lack of a clear pathway. There are areas of overlap between the themes.

Theme	Subthemes
A) Family frustration	<p>Family felt close to giving up.</p> <p>Lack of communication between services.</p> <p>Emergency providers perceived to be unhelpful.</p> <p>Accessing a dentist.</p> <p>Repeat visits.</p>
B) Psychological impact	<p>Impact on parents: feelings of shock, guilt and stress.</p> <p>Impact on children: Feelings of shock.</p> <p>Cumulative stress and uncertainty due to COVID-19.</p> <p>Coping strategies.</p>

C) Information and advice on management of TDIs	Unaware of available services. Finding information and advice. Children's advice from their experience. The legacy of trauma and setting expectations. Communication.
D) Perceived lack of a clear pathway	Lack of signposting. The impact of time. Services unable to provide care. Improving the care received.

### **Adverse events**

There were no adverse events associated with this study