

NeRO 202753 Basic Results Summary

Prepared by: Dr Kim Fletcher (Co-Lead Investigator) and Prof Roshan das Nair (Lead Investigator)

Date: 01 May 2026

Contact: Kimberley.fletcher@nottingham.ac.uk

Participant Flow

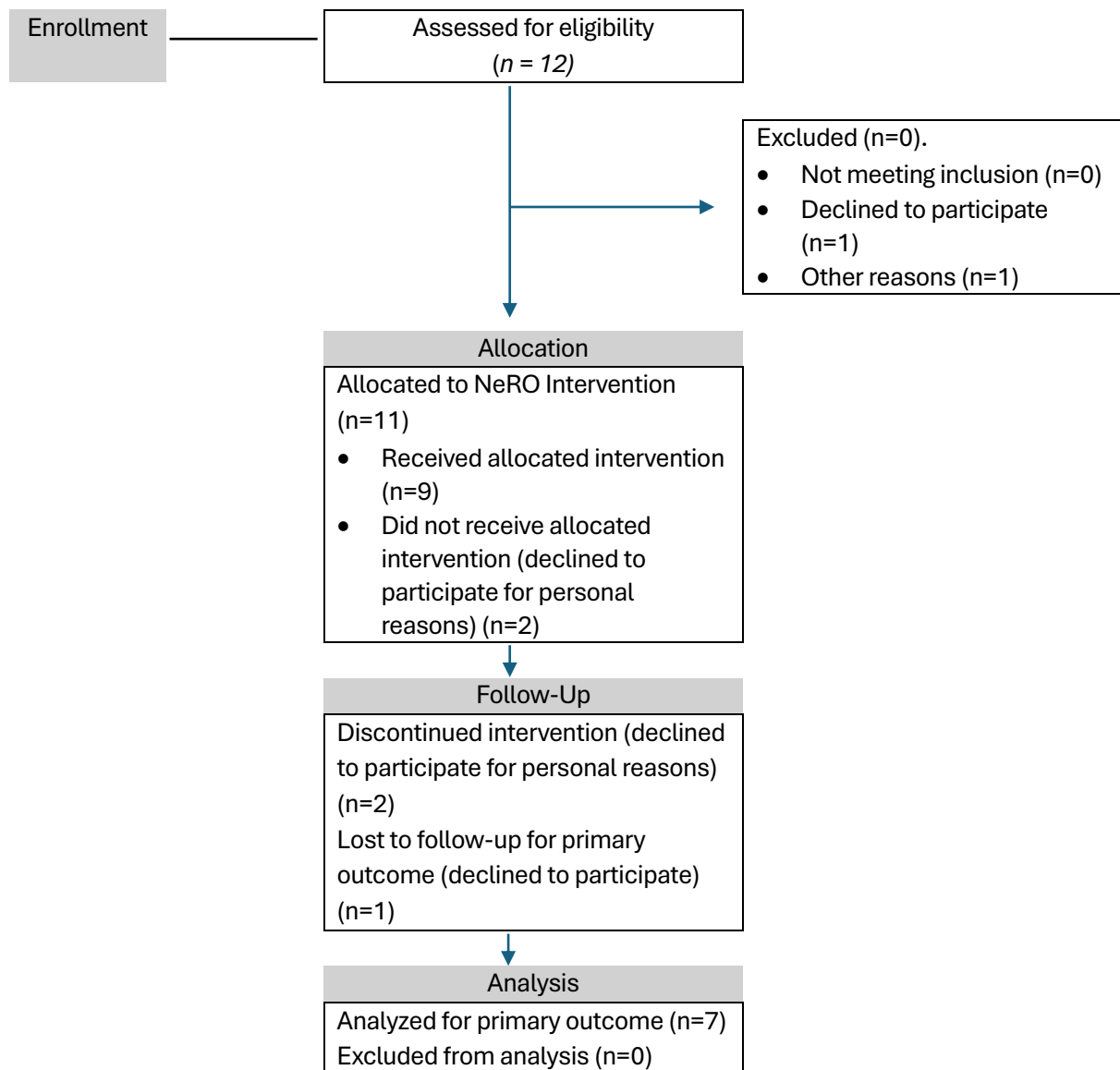


Figure 1. CONSORT Flow Diagram

Baseline Characteristics

Table 1

Baseline characteristics

Category	Group A n = 6	Group B n = 5	All participants n = 11
Age - range (years)	39 – 56	26 – 55	26 – 56
Gender (M:F ratio)	3:3	2:3	5:6
Ethnicity (n)			
<i>White British</i>	5	4	9
<i>White Other</i>	1	0	1
<i>Asian/Indian</i>	0	1	1
<i>Black African/Caribbean</i>	0	0	0
<i>Mixed ethnicity</i>	0	0	0
English as a second language (n)	1	1	2
Type of acquired brain injury (n, %)			
<i>Stroke or hemorrhage</i>	3	3	6
<i>TBI*</i>	3	2	5
Time since diagnosis (range years (y), months (m))	2y 3m – 9y	2y 5m – 12y 3m	2y 3m – 12y 3m
Employment status (n)			
<i>Employed full-time</i>	1	2	3
<i>Employed part-time</i>	0	1	1
<i>Self-employed</i>	1	0	1
<i>Unemployed</i>	1	1	2
<i>Retired</i>	1	1	2
<i>On sick leave</i>	1	0	1
<i>Disabled, unable to work</i>	1	0	1
Highest formal educational attainment (n)			
<i>GCSEs/ Level 2</i>			
<i>A Levels/ Level 3</i>	1	0	1
<i>Undergraduate diploma/ Level 5</i>	0	0	0
<i>Undergraduate degree</i>	0	1	1
<i>Postgraduate degree</i>	3	3	6
<i>Doctorate degree</i>	1	1	2)
Marital status (n, %)			
<i>Single</i>	2	0	2
<i>Dating</i>	0	1	1
<i>Cohabiting</i>	0	1	1
<i>Married</i>	4	3	7
Housing status (n, %)			
<i>Living with family (no rent)</i>	0	1	1
<i>Renting – social housing</i>	1	1	2
<i>Homeowner</i>	5	3	8

Outcome Measure

Table 2

Primary & Secondary outcome measures (part 1)

	WEMWBS		PHQ-9		GAD-7		AAQ-ABI		SCS		QOLIBRI		VLQ	
	Wellbeing		Depression		Anxiety		Acceptance		Self-Compassion		Quality of Life		Valued Living	
PP	Change Score (CS)*	Reliable change ($\geq 7^{52}$)?	CS**	Reliable change ($\geq 5^{53}$)?	CS**	Reliable change ($\geq 6^{54}$)?	CS**	Reliable change ($\geq 10^{44,50}$)?	CS**	Reliable change ($\geq 8^{45,50}$)?	CS*	Reliable change ($\geq 12^{46,50}$)?	CS*	Reliable change ($\geq 14^{47,50}$)?
1	+3.4	N	-5	Y	-1	N	0	N	-1	N	-16	Y	+14	Y
2	+5	N	0	N	+1	N	-1	N	-1	N	-7	N	+9	N
3	+8.4	Y	-3	N	+2	N	-2	N	+1.5	N	+6	N	-2	N
4	+8.4	Y	-3	N	-2	N	0	N	-0.8	N	+10	N	+10	N
5	+15.7	Y	0	N	+3	N	-6	N	+0.45	N	+3	N	+8	N
6	+7	Y	-2	N	-1	N	-8	N	+0.02	N	0	N	+11	N
7	+5.4	N	-4	N	+3	N	+6	N	+0.36	N	-4	N	0	N
Reliable change (n=x)	5		1		0		0		0		1		1	

WEMWBS = Warwick Edinburgh Mental Wellbeing Scale; PHQ-9 = Patient Health Questionnaire-9; GAD-7 = Generalized Anxiety Disorder-7; AAQ-ABI = Acceptance & Action Questionnaire – Acquired Brain Injury; SCS = Self Compassion Scale; QOLIBRI = Quality of Life after Brain Injury Inventory; VLQ = Valued Living Questionnaire

* Increased scores indicate improvement; ** Decreased scores indicate improvement

Primary & Secondary outcome measures (part 2)

	CCSRS		Mini-ACE			GAS-Lite		
	Suicide Risk		Cognition			Goal Attainment		
PP	Category	Change?	Score	Score*	RC (>3)?	Goal 1 achieved?	Goal 2 achieved?	Change score*
1	Moderate	N	27	26	N	Y	Y	+3
2	Low	N	27	24	N	N	Y	0
3	Low	N	29	27	N	Y	Y	+1
4	Low	N	30	30	N	Y	Y	+1
5	Low	N	29	30	N	Y	Y	+3
6	Low	N	24	30	Y	Y	N	+1
7	Low	N	24	28	Y	N	Y	0

CCSRS = Columbia Suicide Severity Scale; GAS = Goal Attainment Scale - Lite

* Increased scores indicate improvement; ** Decreased scores indicate improvement

Adverse Events

There were no adverse events associated with this study.