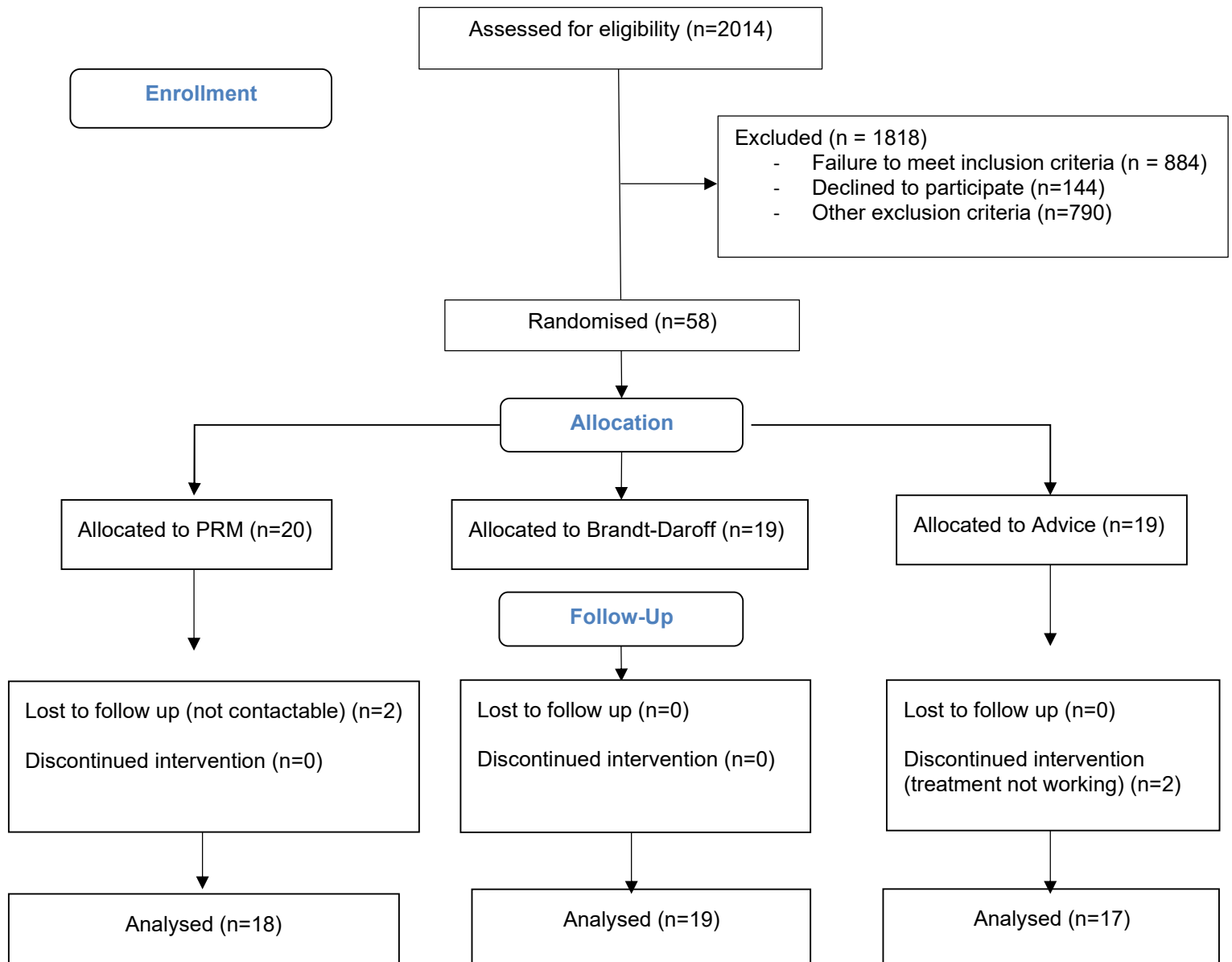


## Participant flow



## Baseline Characteristics

Clinical Characteristic	Manoeuvres (20)	Brandt Daroff (19)	Advice (19)
Age, mean (SD)	53.3 (15.27)	52.68 (18.29)	54.57 (20.48)
Sex, n (%)			
Male	14 (70%)	15 (79%)	10 (53%)
Female	6 (30%)	4 (21%)	9 (47%)
Injury details			
GCS at scene, median (IQR)	14 (1.5)	14 (2.5)	15 (1)
Moderate-severe TBI, n (%)	14 (70%)	11 (57%)	15 (79%)
Injury mechanism – RTA, n (%)	8 (40%)	9 (47%)	8 (42%)
Skull fractures, n (%)	13 (65%)	13 (68%)	10 (53%)
BPPV details			
Unilateral BPPV, n (%)	8 (40%)	13 (68%)	9 (47%)
Bilateral BPPV, n (%)	9 (45%)	4 (21%)	10 (53%)

## Outcome measures at baseline

	PRM	Brandt Daroff	Advice
Subjective outcomes (mean, SD)			
UCLA	14.7 (4.58)	11.1 (4.67)	13.5 (5.42)
ABC	51.4 (33.23)	75.5 (24.53)	56.4 (30.83)
HADS	17.3 (8.60)	12.1 (9.82)	13.9 (8.79)
EQ5D	49.6 (26.08)	65.4 (15.69)	52.4 (22.88)
Objective outcomes (mean, SD)			
mCSTBI	111.8 (16.19)	114.1 (14.84)	110.0 (21.21)
mDGI	51.0 (9.79)	54.6 (12.17)	40.3 (17.15)

## Adverse events

Adverse events (vomiting)	Serious adverse events
4 patients	0