

RESULTS

Participant Flow

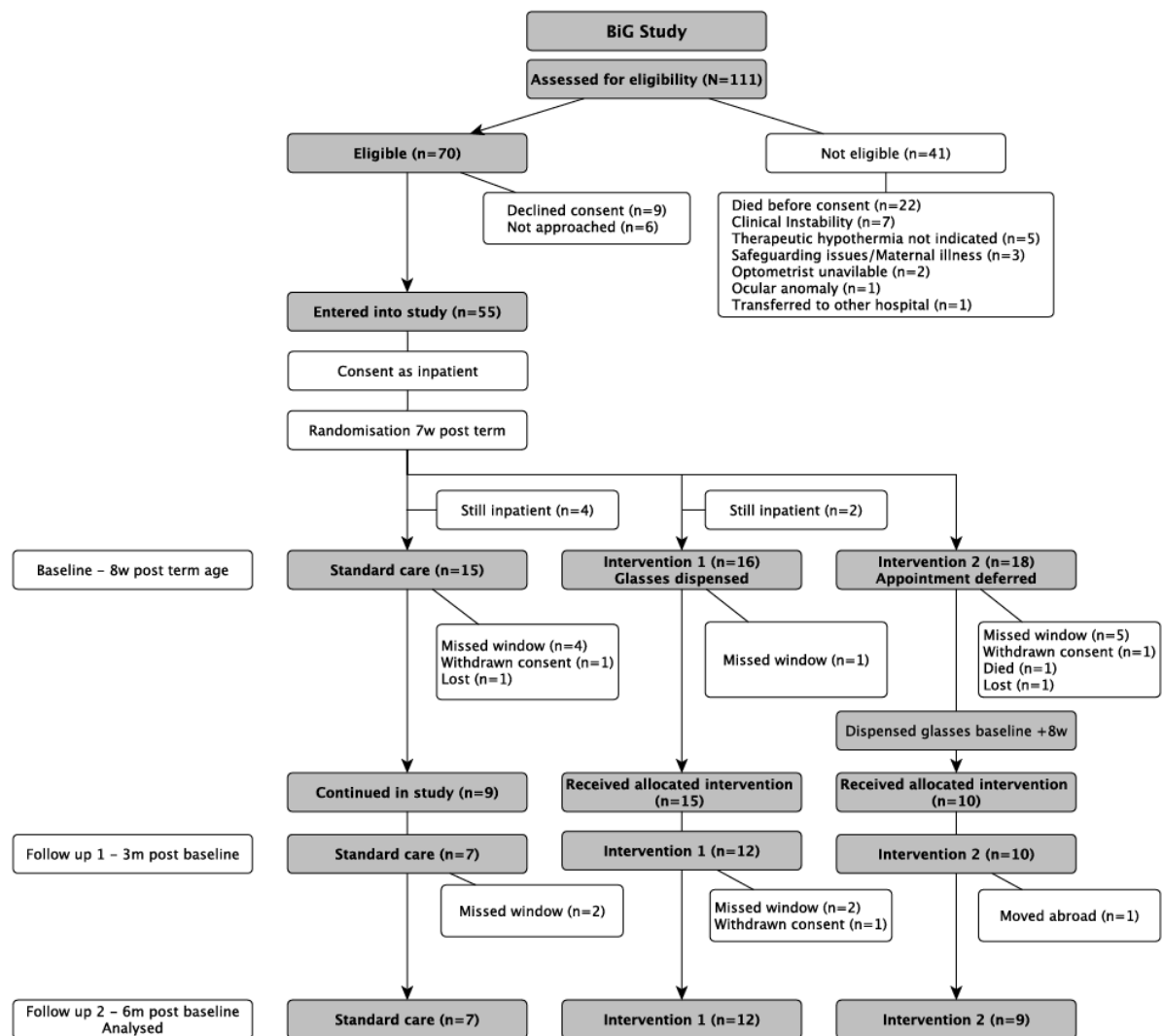


Figure 1 – Consort diagram for BiG Feasibility Study

Baseline Characteristics

	Preterm group			HIE group		
	Standard Care	Intervention 1	intervention 2	Standard Care	Intervention 1	intervention 2
Male sex	11/17 (65%)	11/17 (65%)	7/15 (47%)	2/2 (100%)	0/1 (0%)	2/3 (67%)
Gestational age, mean (SD)	26 (2.0)	26 (1.9)	27 (1.6)	38.5 (0.7)	41 (-)	38.7 (2.1)
Birthweight (g), median (IQR)	795 (560-1170)	799 (575-1386)	890 (452-1290)	3520 (3290 ---)	3387 (---)	2852 (2800 ---)
Ethnicity						
White	3	5	5	1	0	1
Black	4	2	2	1	1	1
Asian	4	3	5	0	0	0
Mixed/other	6	7	3	0	0	1
Plurality						
Singleton	10	6	9	2	1	3
Twin	4	11	3	0	0	0
Triplet	3	0	3	0	0	0
Bronchopulmonary dysplasia (BPD) ¹	8/17 (47%)	10/17 (59%)	5/15 (33%)			
Necrotising enterocolitis	3/17 (18%)	3/17 (18%)	1/15 (7%)			
Sepsis (n episodes)	3/17 (18%)	6/17 (35%)	4/15 (27%)			
Intraventricular haemorrhage	1/17 (6%)	2/17 (12%)	3/15 (20%)			
Periventricular leucomalacia	4/17 (24%)	8/17 (47%)	3/15 (20%)			
ROP ²	1/17 (6%)	3/17 (18%)	0/15 (0%)			
Therapeutic Hypothermia (days)				3.5	3	3 3
Seizures				0/2 (0%)	0/1 (0%)	1/3 (33%)
Abnormal MRI scan				2/2 (100%)	0/1 (0%)	2/3 (67%)

¹ Supplemental oxygen at 36 weeks postmenstrual age; ² Retinopathy of prematurity requiring treatment

Table 1: Demographics, clinical outcomes and comorbidities by study arm

Outcome Measures

	Baseline			Visit 2 Assessment (12-week follow-up)			Final assessment (24-week follow-up)		
	Standard care	Intervention 1	Intervention 2	Standard care	Intervention 1	Intervention 2	Standard care	Intervention 1	Intervention 2
Uncorrected logMAR visual acuity Mean (SD)	1.48 (0.31) n=9	1.45 (0.33) n=14	1.09 (0.25) n=10	0.91 (0.15) n=7	1.08 (0.35) n=9	0.88 (0.15) n=10	0.96 (0.21) n=7	0.88 (0.45) n=10	0.76 (0.39) n=5
Corrected logMAR visual acuity Mean (SD)	-	-	-	-	0.89 (0.28) n=11	0.70 (0.17) n=7	-	0.79 (0.38) n=10	0.74 (0.34) n=8
Refractive error * (dioptres, D), Mean (SD)	+1.94 (2.07) n=9	+2.15 (1.43) n=10	+1.55 (1.29) n=10	+1.11 (1.44) n=7	+2.07 (1.25) n=7	+0.38 (3.14) n=10	+0.75 (1.21) n=7	+1.39 (1.61) n=7	-0.17 (3.60) n=9
Δ Refractive Error (D) Mean [95% CI]	-	-	-	0.68, [-0.79, 2.15] n=7	0.00 [-0.82, 0.82] n=7	1.18 [-0.45, 2.80] n=10	1.04, [-0.16, 2.23] n=7	0.43, [-0.62, 1.48] n=7	1.81, [-0.40, 4.02] n=9
Uncorrected accommodative response (D) Mean (SD)	-0.25 (1.75) n=8	-0.42 (1.59) n=12	0.20 (1.51) n=10	0.04 (1.16) n=7	0.17 (1.30) n=12	1.00 (1.03) n=9	0.43 (0.59) n=7	-0.15 (0.98) n=10	0.03 (0.79) n=9

^ΔDifference in means; baseline visit minus final visit i.e. myopic shift, *mean spherical equivalent right eye

Table 2: Summary of uncorrected and corrected visual acuity, refractive error, and accommodative lag (+)/lead (-) across study arms, comparing baseline to final visit measurements in the right eye.

	Baseline			Final assessment		
	Standard care	Intervention 1	Intervention 2	Standard care	Intervention 1	Intervention 2
	n=9	n=15	n=10	n=7 age 8m ²	n=11 age 8m ²	n=9 age 10m ²
Corneal Reflections	3 (33%)	6 (40%)	8 (80%)	7 (100%)	8 (73%)	8 (89%)
Diffuse light reaction (RHS)	3 (38%) ¹	4 (29%) ¹	7 (78%) ¹	6 (100%) ¹	7 (88%) ¹	8 (100%) ¹
Lateral tracking (RHS)	6 (67%)	10 (71%) ¹	9 (90%)	7 (100%)	10 (100%) ¹	9 (100%)
Saccadic/smooth tracking (RHS)	6 (100%) ¹	10 (100%) ¹	9 (100%) ¹	7 (100%)	10 (100%) ¹	9 (100%)
Peripheral refixation (RHS)	5 (56%)	6 (43%) ¹	9 (90%)	7 (100%)	9 (90%) ¹	9 (100%)
Sustained Visual attention (RHS)	1 (14%) ¹	2 (15%) ¹	3 (38%) ¹	5 (71%)	6 (67%) ¹	9 (100%)
Distance visual attention is broken	2 (29%) ¹	5 (39%) ¹	3 (38%) ¹	6 (86%)	7 (78%) ¹	9 (100%)
Pupillary response to light	8 (100%) ¹	12 (100%) ¹	10 (100%) ¹	7 (100%)	11 (100%)	9 (100%)
Object permanence (partially covered)	-	-	-	5 (71%)	8 (89%) ¹	7 (78%)
Object permanence (fully covered)	-	-	-	2 (29%)	5 (56%) ¹	4 (44%)
Batting and reaching	1 (11%)	0	4 (40%)	7 (100%)	10 (100%) ¹	9 (100%)
Follows fallen toy	-	-	1 (14%) ¹	6 (86%)	9 (90%) ¹	9 (100%)
Defensive blink	5 (56%)	9 (64%) ¹	10 (100%)	7 (100%)	10 (100%) ¹	9 (100%)
Convergence	8 (89%)	8 (53%)	10 (100%)	7 (100.0%)	10 (100%) ¹	9 (100%)

¹ Not all infants completed this task; ² Age corrected for preterm birth where appropriate (i.e post term age)

Table 3: Pass rates for ABCDEFV items assessed binocularly.

Adverse Events

There were no adverse events associated with this study.