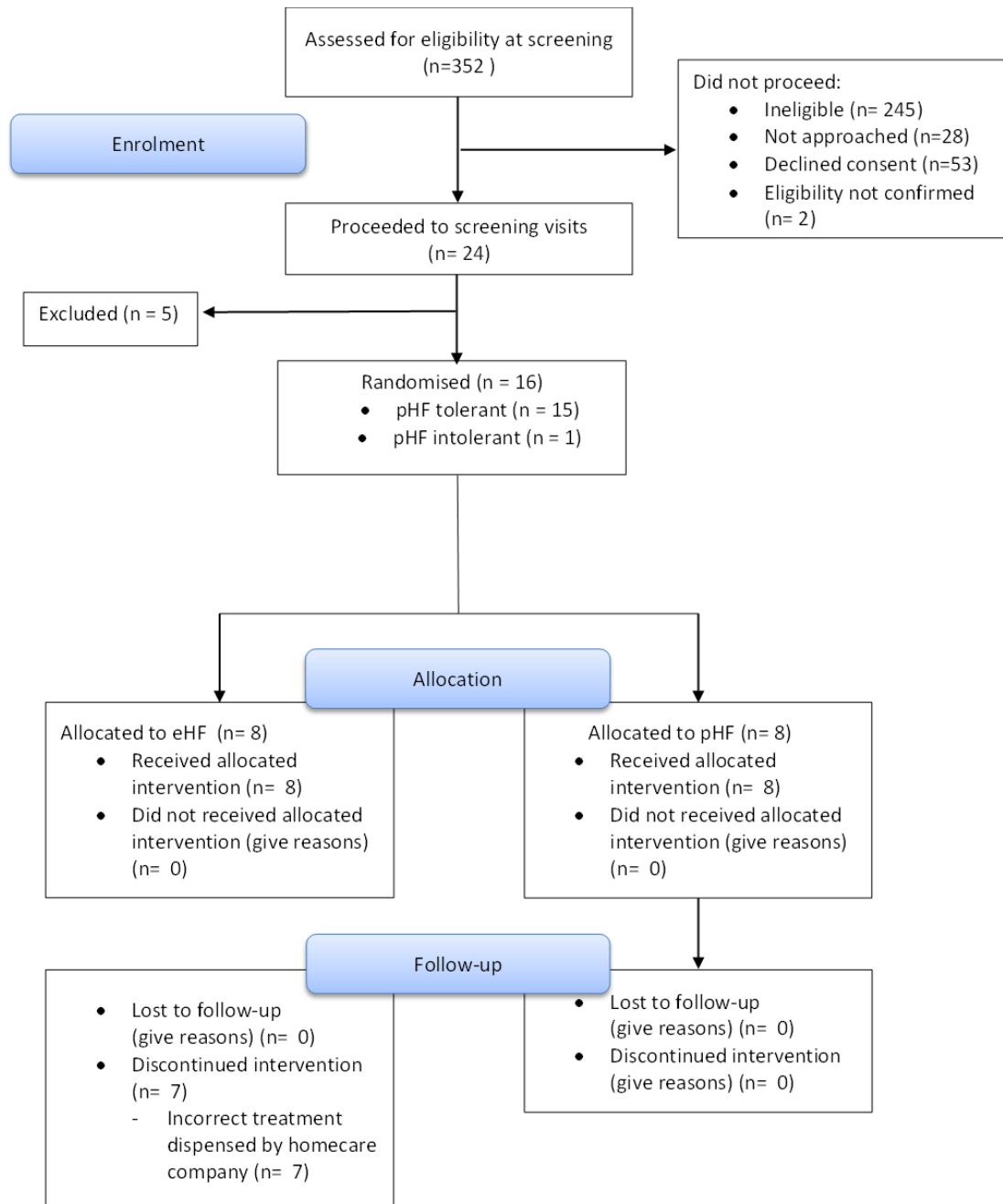


# DREAM Summary Results Report

## CONSORT Flow Diagram



Created using: Z:\DREAM\Statistical Analysis\Final analysis\Programs\06 – Consort Diagram.sas

## Baseline Characteristics

Table 7-1 Demographic details

	Randomised Patients			Patients who attended visit 1 but weren't randomised
	Intervention: pHF	Control : eHF	Total	
Age at first screening (Months)				
N	8	8	16	8
Mean (sd)	10.00 (1.51)	10.00 (1.93)	10.00 (1.67)	8.25 (3.45)
Median (IQR)	9.50 (2.50)	10.00 (2.00)	10.00 (2.50)	9.00 (3.50)
Range [Min, Max]	[8.00, 12.00]	[6.00, 12.00]	[6.00, 12.00]	[1.00, 12.00]
Missing	0	0	0	0
Gender : n(%)	(N = 8 )	(N = 8 )	(N = 16 )	(N = 8 )
Female	3 (37.5%)	2 (25%)	5 (31.3%)	3 (37.5%)
Male	5 (62.5%)	6 (75%)	11 (68.8%)	4 (50%)
Missing	0	0	0	1

Created using: Z:\DREAM\Statistical Analysis\Final analysis\Programs\09 - Baseline.sas

Table 7-2 Medical History

	Randomised Patients			Patients who attended visit 1 but weren't randomised
	Intervention: pHF	Control : eHF	Total	
	(N = 8 )	(N = 8 )	(N = 16 )	(N = 8 )
Asthma	0	1 (12.5%)	1 (6.3%)	1 (12.5%)
Wheeze	0	1 (12.5%)	1 (6.3%)	1 (12.5%)
Urticaria and angioedema (hives)	6 (75%)	1 (12.5%)	7 (43.8%)	6 (75%)
Atopic dermatitis	7 (87.5%)	7 (87.5%)	14 (87.5%)	3 (37.5%)
Doctor diagnosed food allergies	7 (87.5%)	7 (87.5%)	14 (87.5%)	5 (62.5%)
Drug allergies	0	1 (12.5%)	1 (6.3%)	1 (12.5%)
Other diseases	4 (50%)	1 (12.5%)	5 (31.3%)	2 (25%)
None	0	0	0	0
Not Known	0	0	0	0

Created using: Z:\DREAM\Statistical Analysis\Final analysis\Programs\09 - Baseline.sas

Table 7-3 Physical Exam

	Randomised Patients			
	Intervention: pHF	Control : eHF	Total	Patients who attended visit 1 but weren't randomised
Weight (kg)				
N	8	8	16	8
Mean (sd)	8.65 (0.74)	8.27 (0.54)	8.46 (0.66)	7.59 (3.20)
Median (IQR)	8.75 (1.20)	8.30 (0.73)	8.45 (1.00)	8.90 (1.80)
Range [Min, Max]	[7.50, 9.60]	[7.50, 9.10]	[7.50, 9.60]	[0.00, 9.90]
Missing	0	0	0	0
Height (cm)				
N	8	8	16	8
Mean (sd)	71.13 (2.47)	71.50 (1.20)	71.31 (1.89)	61.63 (25.04)
Median (IQR)	71.50 (3.50)	71.00 (1.00)	71.00 (1.50)	70.00 (5.50)
Range [Min, Max]	[67.00, 74.00]	[70.00, 74.00]	[67.00, 74.00]	[0.00, 74.00]
Missing	0	0	0	0
EASI Score				
N	8	7	15	3
Mean (sd)	9.75 (14.29)	1.87 (1.68)	6.07 (10.95)	1.43 (1.91)
Median (IQR)	2.95 (16.80)	1.80 (3.40)	1.80 (5.00)	0.70 (3.60)
Range [Min, Max]	[0.00, 37.10]	[0.00, 4.40]	[0.00, 37.10]	[0.00, 3.60]
Missing	0	1	1	5

Created using: Z:\DREAM\Statistical Analysis\Final analysis\Programs\09 - Baseline.sas

Table 7-4 Skin Prick Tests

	Randomised Patients			Patients who attended visit 1 but weren't randomised
	Intervention: pHF	Control : eHF	Total	
Cow's milk wheal diameter using whole fresh milk (mm)				
N	8	8	16	7
Mean (sd)	8.63 (2.88)	10.75 (4.43)	9.69 (3.77)	6.29 (4.82)
Median (IQR)	7.50 (2.50)	11.50 (7.00)	8.50 (5.50)	6.00 (10.00)
Range [Min, Max]	[6.00, 15.00]	[4.00, 17.00]	[4.00, 17.00]	[0.00, 12.00]
Missing	0	0	0	1
Commercial milk extracts wheal diameter (mm)				
N	8	8	16	7
Mean (sd)	7.38 (2.83)	8.13 (4.09)	7.75 (3.42)	4.86 (4.85)
Median (IQR)	7.00 (4.50)	8.00 (5.00)	7.50 (4.50)	5.00 (10.00)
Range [Min, Max]	[3.00, 11.00]	[2.00, 15.00]	[2.00, 15.00]	[0.00, 10.00]
Missing	0	0	0	1
Egg wheal diameter (mm)				
N	6	6	12	7
Mean (sd)	4.00 (3.41)	4.83 (3.31)	4.42 (3.23)	1.14 (2.27)
Median (IQR)	4.50 (7.00)	4.50 (5.00)	4.50 (6.00)	0.00 (2.00)
Range [Min, Max]	[0.00, 8.00]	[0.00, 9.00]	[0.00, 9.00]	[0.00, 6.00]
Missing	2	2	4	1
House dust mite mix wheal diameter (mm)				
N	8	8	16	7
Mean (sd)	0.00 (0.00)	0.00 (0.00)	0.00 (0.00)	0.00 (0.00)
Median (IQR)	0.00 (0.00)	0.00 (0.00)	0.00 (0.00)	0.00 (0.00)
Range [Min, Max]	[0.00, 0.00]	[0.00, 0.00]	[0.00, 0.00]	[0.00, 0.00]
Missing	0	0	0	1
Cat dander wheal diameter (mm)				
N	8	8	16	7
Mean (sd)	1.00 (1.93)	2.13 (2.53)	1.56 (2.25)	0.57 (0.98)
Median (IQR)	0.00 (1.50)	1.00 (4.50)	0.00 (3.50)	0.00 (2.00)
Range [Min, Max]	[0.00, 5.00]	[0.00, 6.00]	[0.00, 6.00]	[0.00, 2.00]
Missing	0	0	0	1

	Randomised Patients			Patients who attended visit 1 but weren't randomised
	Intervention: pHF	Control : eHF	Total	
6 grass pollen wheal diameter (mm)				
N	8	8	16	7
Mean (sd)	0.38 (1.06)	0.00 (0.00)	0.19 (0.75)	0.00 (0.00)
Median (IQR)	0.00 (0.00)	0.00 (0.00)	0.00 (0.00)	0.00 (0.00)
Range [Min, Max]	[0.00, 3.00]	[0.00, 0.00]	[0.00, 3.00]	[0.00, 0.00]
Missing	0	0	0	1

Created using: Z:\DREAM\Statistical Analysis\Final analysis\Programs\09 - Baseline.sas

Table 7-5 Antigen specific IgE test

	Randomised Patients			Patients who attended visit 1 but weren't randomised
	Intervention: pHF	Control : eHF	Total	
Cows milk (CM-IgE) (kU/L)				
N	8	7	15	6
Mean (sd)	19.98 (33.49)	12.29 (22.37)	16.39 (28.12)	5.09 (8.21)
Median (IQR)	4.60 (19.59)	3.56 (4.82)	4.39 (17.24)	1.72 (5.08)
Range [Min, Max]	[1.62, 100.00]	[0.93, 62.80]	[0.93, 100.00]	[0.00, 21.30]
Missing	0	1	1	2
Alpha Lactalbumin (ALA-IgE) (kU/L)				
N	7	6	13	6
Mean (sd)	3.19 (5.13)	1.38 (1.62)	2.35 (3.89)	0.77 (1.10)
Median (IQR)	1.34 (4.20)	0.86 (1.24)	1.06 (1.24)	0.41 (0.12)
Range [Min, Max]	[0.11, 14.30]	[0.10, 4.50]	[0.10, 14.30]	[0.00, 3.00]
Missing	1	2	3	2
Beta Lactoglobulin (BLA-IgE) (kU/L)				
N	7	6	13	5
Mean (sd)	3.94 (6.12)	3.31 (2.88)	3.65 (4.72)	2.26 (4.17)
Median (IQR)	0.61 (9.41)	3.00 (6.03)	0.62 (6.03)	0.58 (0.31)
Range [Min, Max]	[0.35, 15.40]	[0.10, 6.87]	[0.10, 15.40]	[0.00, 9.71]
Missing	1	2	3	3

	Randomised Patients			
	Intervention: pHF	Control : eHF	Total	Patients who attended visit 1 but weren't randomised
Casein (Cas-IgE) (kU/L)				
N	7	6	13	6
Mean (sd)	19.63 (36.70)	2.77 (3.92)	11.85 (27.50)	4.92 (8.73)
Median (IQR)	1.99 (26.59)	1.52 (2.64)	1.99 (4.99)	1.05 (4.92)
Range [Min, Max]	[0.50, 100.00]	[0.10, 10.40]	[0.10, 100.00]	[0.00, 22.30]
Missing	1	2	3	2

Created using: Z:\DREAM\Statistical Analysis\Final analysis\Programs\09 - Baseline.sas

Table 7-6 Demographics

	Randomised Patients		
	Intervention: pHF	Control : eHF	Total
Ethnicity	(N = 8 )	(N = 8 )	(N = 16 )
White	5 (62.5%)	4 (50%)	9 (56.3%)
Mixed/Multiple Ethnic groups	0	1 (12.5%)	1 (6.3%)
Asian/Asian British	2 (25%)	3 (37.5%)	5 (31.3%)
Black, African, Caribbean or Black British	0	0	0
Other ethnic group	1 (12.5%)	0	1 (6.3%)
Missing	0	0	0
Birth Weight (kg)			
N	7	8	15
Mean (sd)	3.33 (0.37)	3.27 (0.24)	3.30 (0.30)
Median (IQR)	3.40 (0.60)	3.18 (0.34)	3.30 (0.40)
Range [Min, Max]	[2.70, 3.80]	[3.02, 3.70]	[2.70, 3.80]
Missing	1	0	1
Gestation time (weeks)			
N	8	7	15
Mean (sd)	39.25 (1.16)	38.86 (1.35)	39.07 (1.22)
Median (IQR)	39.50 (2.00)	39.00 (2.00)	39.00 (2.00)
Range [Min, Max]	[38.00, 41.00]	[37.00, 41.00]	[37.00, 41.00]
Missing	0	1	1
Parity			
N	7	8	15
Mean (sd)	1.71 (1.50)	1.25 (0.46)	1.47 (1.06)
Median (IQR)	2.00 (3.00)	1.00 (0.50)	1.00 (1.00)
Range [Min, Max]	[0.00, 4.00]	[1.00, 2.00]	[0.00, 4.00]
Missing	1	0	1
Number of siblings living at same house			
N	8	8	16
Mean (sd)	1.00 (1.07)	0.38 (0.52)	0.69 (0.87)
Median (IQR)	1.00 (1.50)	0.00 (1.00)	0.50 (1.00)
Range [Min, Max]	[0.00, 3.00]	[0.00, 1.00]	[0.00, 3.00]
Missing	0	0	0

Table 7-7 Family history

	Randomised Patients		
	Intervention: pHF	Control : eHF	Total
	(N = 8 )	(N = 8 )	(N = 16 )
Eczema-atopic dermatitis	6 (75%)	4 (50%)	10 (62.5%)
Allergic rhinoconjunctivitis (hay fever)	6 (75%)	6 (75%)	12 (75%)
Asthma	5 (62.5%)	3 (37.5%)	8 (50%)
Food allergy	1 (12.5%)	3 (37.5%)	4 (25%)
None	0	1 (12.5%)	1 (6.3%)
Not Known	0	0	0

## Outcome Measures

No analysis of primary or secondary outcomes undertaken due to trial stopping prematurely.

## Adverse Events

### Non-serious adverse events

Table 0-8 Non-serious adverse events

Non-Serious adverse event	Control : eHF		Intervention:pHF		Total	
	Events n	Patients n(%)	Events n	Patients n(%)	Events n	Patients n(%)
Allergic Reaction	0	0	6	5 (33.3%)	6	5 (31.3%)
Bronchial Infection	1	1 (12.5%)	1	1 (6.7%)	2	2 (12.5%)
Chest Infection	0	0	2	1 (6.7%)	2	1 (6.3%)
Conjunctivitis	0	0	2	1 (6.7%)	2	1 (6.3%)
Cough	0	0	1	1 (6.7%)	1	1 (6.3%)
Croup	0	0	2	2 (13.3%)	2	2 (12.5%)
Diarrhoea	0	0	3	2 (13.3%)	3	2 (12.5%)
Eczema flare	0	0	8	2 (13.3%)	8	2 (12.5%)
Eye Angioedema	0	0	1	1 (6.7%)	1	1 (6.3%)
Fall	0	0	2	1 (6.7%)	2	1 (6.3%)
Fever	2	2 (25%)	7	3 (20%)	9	5 (31.3%)
Flu symptoms	0	0	1	1 (6.7%)	1	1 (6.3%)



Non-Serious adverse event	Control : eHF		Intervetion:pHF		Total	
	Events n	Patients n(%)	Events n	Patients n(%)	Events n	Patients n(%)
Gastric Reflux	0	0	1	1 (6.7%)	1	1 (6.3%)
Hand, Foot & mouth disease	0	0	1	1 (6.7%)	1	1 (6.3%)
Hayfever	0	0	1	1 (6.7%)	1	1 (6.3%)
Heat Stroke	0	0	1	1 (6.7%)	1	1 (6.3%)
Infected bite (animal)	1	1 (12.5%)	0	0	1	1 (6.3%)
Loose Stool	0	0	1	1 (6.7%)	1	1 (6.3%)
Post vaccination symptoms	0	0	1	1 (6.7%)	1	1 (6.3%)
Rash	0	0	2	1 (6.7%)	2	1 (6.3%)
Red swollen eye	1	1 (12.5%)	0	0	1	1 (6.3%)
Skin Infection	0	0	3	1 (6.7%)	3	1 (6.3%)
Sore throat	0	0	1	1 (6.7%)	1	1 (6.3%)
Teething	2	1 (12.5%)	5	1 (6.7%)	7	2 (12.5%)
Tonsillitis	1	1 (12.5%)	1	1 (6.7%)	2	2 (12.5%)
Toothache	1	1 (12.5%)	1	1 (6.7%)	2	1 (6.3%)
Upper Respiratory Infection	2	2 (25%)	5	4 (26.7%)	7	6 (37.5%)
Urticaria	2	1 (12.5%)	7	2 (13.3%)	9	3 (18.8%)
Viral illness	2	2 (25%)	1	1 (6.7%)	3	3 (18.8%)
Vomiting	0	0	7	3 (20%)	7	3 (18.8%)
Vomiting and diarrhoea	1	1 (12.5%)	0	0	1	1 (6.3%)
<b>Total</b>	<b>16</b>	<b>6 (75%)</b>	<b>75</b>	<b>9 (60%)</b>	<b>91</b>	<b>11 (68.8%)</b>

Created using: Z:\DREAM\Statistical Analysis\Final analysis\Programs\12 - Adverse events.sas

Table 0-9 Non-serious adverse events by severity

Non-Serious adverse eventSeverity		Control : eHF		Intervetion:pHF		Total	
		Events n	Patients n(%)	Events n	Patients n(%)	Events n	Patients n(%)
Allergic Reaction	Mild	0	0	5	4 (26.7%)	5	4 (25%)
	Severe	0	0	1	1 (6.7%)	1	1 (6.3%)
Bronchial Infection	Mild	1	1 (12.5%)	1	1 (6.7%)	2	2 (12.5%)
Chest Infection	Mild	0	0	2	1 (6.7%)	2	1 (6.3%)
Conjunctivitis	Mild	0	0	2	1 (6.7%)	2	1 (6.3%)
Cough	Mild	0	0	1	1 (6.7%)	1	1 (6.3%)
Croup	Mild	0	0	1	1 (6.7%)	1	1 (6.3%)
	Moderate	0	0	1	1 (6.7%)	1	1 (6.3%)
Diarrhoea	Mild	0	0	2	2 (13.3%)	2	2 (12.5%)
	Moderate	0	0	1	1 (6.7%)	1	1 (6.3%)
Eczema flare	Mild	0	0	8	2 (13.3%)	8	2 (12.5%)
Eye Angioedema	Mild	0	0	1	1 (6.7%)	1	1 (6.3%)
Fall	Mild	0	0	2	1 (6.7%)	2	1 (6.3%)
Fever	Mild	2	2 (25%)	7	3 (20%)	9	5 (31.3%)
Flu symptoms	Mild	0	0	1	1 (6.7%)	1	1 (6.3%)
Gastric Reflux	Mild	0	0	1	1 (6.7%)	1	1 (6.3%)
Hand, Foot & mouth disease	Mild	0	0	1	1 (6.7%)	1	1 (6.3%)
Hayfever	Mild	0	0	1	1 (6.7%)	1	1 (6.3%)
Heat Stroke	Mild	0	0	1	1 (6.7%)	1	1 (6.3%)
Infected bite (animal)	Mild	1	1 (12.5%)	0	0	1	1 (6.3%)
Loose Stool	Mild	0	0	1	1 (6.7%)	1	1 (6.3%)
Post vaccination symptoms	Mild	0	0	1	1 (6.7%)	1	1 (6.3%)
Rash	Mild	0	0	2	1 (6.7%)	2	1 (6.3%)

Non-Serious adverse event		Severity	Control : eHF		Intervetion:pHF		Total	
			Events n	Patients n(%)	Events n	Patients n(%)	Events n	Patients n(%)
Red swollen eye		Mild	1	1 (12.5%)	0	0	1	1 (6.3%)
Skin Infection		Mild	0	0	3	1 (6.7%)	3	1 (6.3%)
Sore throat		Mild	0	0	1	1 (6.7%)	1	1 (6.3%)
Teething		Mild	2	1 (12.5%)	5	1 (6.7%)	7	2 (12.5%)
Tonsillitis		Mild	1	1 (12.5%)	1	1 (6.7%)	2	2 (12.5%)
Toothache		Mild	1	1 (12.5%)	1	1 (6.7%)	2	1 (6.3%)
Upper Respiratory Infection		Mild	2	2 (25%)	5	4 (26.7%)	7	6 (37.5%)
Urticaria		Mild	2	1 (12.5%)	7	2 (13.3%)	9	3 (18.8%)
Viral illness		Mild	2	2 (25%)	1	1 (6.7%)	3	3 (18.8%)
Vomiting		Mild	0	0	7	3 (20%)	7	3 (18.8%)
Vomiting and diarrhoea		Mild	1	1 (12.5%)	0	0	1	1 (6.3%)
<b>Total</b>		<b>Mild</b>	<b>16</b>	<b>6 (75%)</b>	<b>72</b>	<b>6 (40%)</b>	<b>88</b>	<b>8 (50%)</b>
<b>Total</b>		<b>Moderate</b>	<b>0</b>	<b>0</b>	<b>2</b>	<b>2 (13.3%)</b>	<b>2</b>	<b>2 (12.5%)</b>
<b>Total</b>		<b>Severe</b>	<b>0</b>	<b>0</b>	<b>1</b>	<b>1 (6.7%)</b>	<b>1</b>	<b>1 (6.3%)</b>

Created using: Z:\DREAM\Statistical Analysis\Final analysis\Programs\12 - Adverse events.sas

Note: Where patients have experienced more than one adverse event and more than one severity, they have been reported in the most severe category

## Serious adverse events

Table 0-10 Line listing of serious adverse events

SAE number	Treatment Allocation	Diagnosis	Onset date	Serious Criteria	Severity	eHF			pHF			Most likely cause, if unrelated (PI assessment)	Outcome
						Relatedness		Expectedness	Relatedness		Expectedness		
						Site assessment	MR assessment		Site assessment	MR assessment			
1	pHF	chest infection	26/06/2023	Required Hospitalisation	Moderate	Unrelated	Unrelated	Not Expected	Unrelated	Unrelated	Not Expected	viral infection	Resolved
2	pHF	anaphylaxis to cows milk exposure	21/08/2023	Required Hospitalisation	Severe	Unrelated	Unrelated	Expected	Unrelated	Unrelated	Expected	Patient's original condition	Resolved
3	pHF	infected chickenpox	15/10/2023	Required Hospitalisation	Severe	Unlikely	Unrelated	Not Expected	Unlikely	Unrelated	Not Expected	infection- chickenpox	Resolved

Created using: Created using: Z:\DREAM\Statistical Analysis\Final analysis\Programs\12 - Adverse events.sas