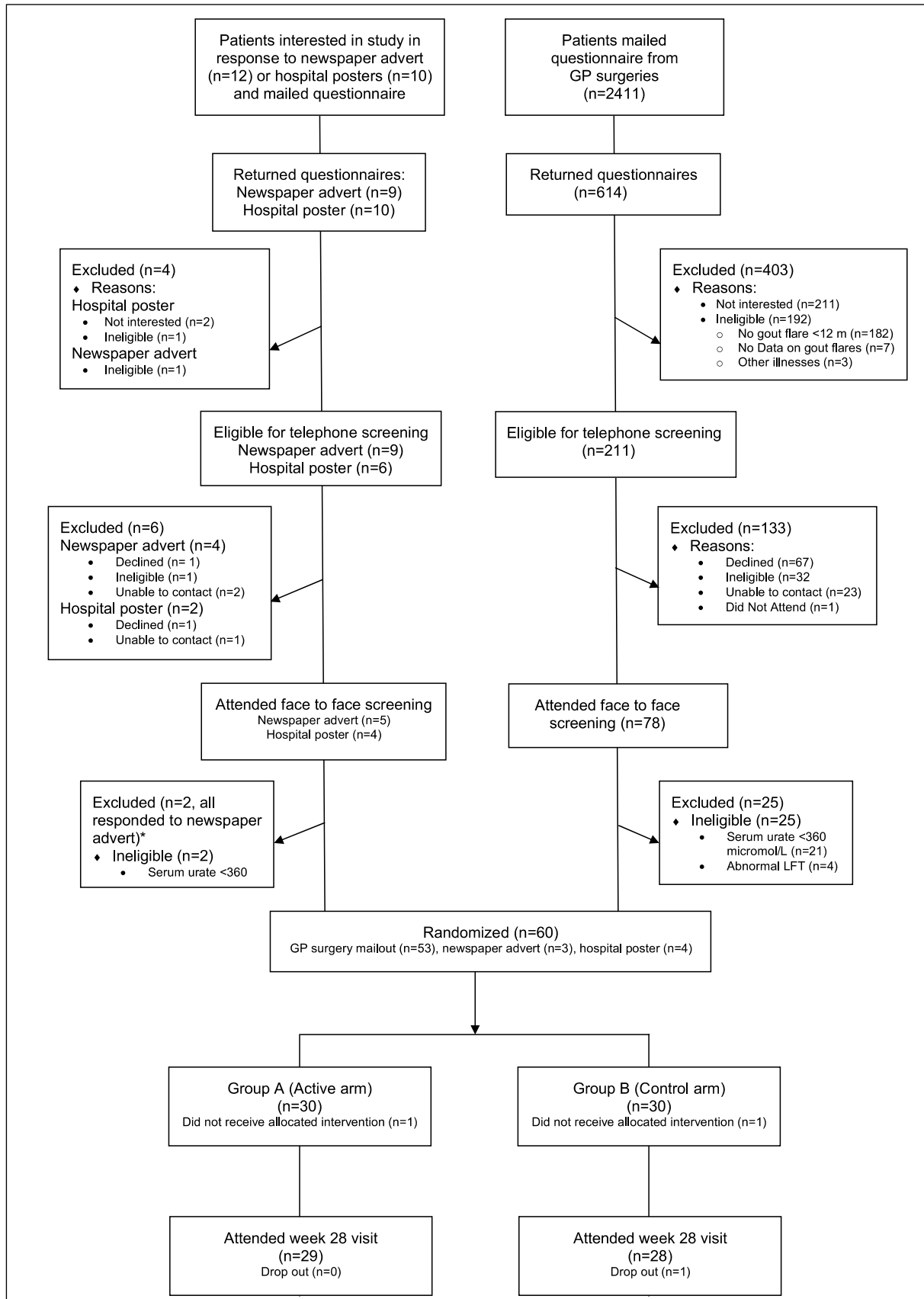


## Participant flow



## Baseline characteristics

	Control (n=30)	Active (n=30)
Age (years)	58.07(11.42)	54.93 (12.54)
Sex (Male)	28 (93.33%)	30 (100%)
Body Mass Index (kg/m <sup>2</sup> )	31.96 (4.98)	30.05 (4.79)
Mean Blood Pressure (mmHg)	107.01 (11.76)	109.03 (11.64)
Diabetes	1 (3.33%)	2(6.67%)
Hypertension	8 (26.67%)	5(16.67%)
Hypercholesterolemia	7 (23.3%)	4 (13.33%)
Ischaemic Heart Disease	3 (10%)	0
Cerebrovascular Disease	0	1(3.33%)
Age at gout onset (years)	47.43 (13.05)	43.28 (13.05)
No. gout flares in 12 months	2 (1 to 5)	3 (1 to 5)
Allopurinol contraindicated	2 (6.67%)	1 (3.33%)
Currently on urate lowering treatment	13 (43.33%)	8 (26.67%)
Mean allopurinol dose (mg/day)	175 (86.60)	262.5 (91.61)
Serum urate (µmol/L)	452.1 (56.15)	454.67 (66.57)
Serum creatinine (µmol/L)	86.93 (19.44)	85.67 (24.44)
RBC omega-3 fatty acid level	0.06 (0.01)	0.06 (0.02)
Tophus present	4 (13.33%)	2 (6.67%)
Largest tophus size (mm)	29.5 (18.5 to 29.5)	33.5 (9 to 58)
<b>GIS domains</b>		
Gout concern overall	75.21 (23.47)	66.59 (29.47)
Gout medication side effects	60.42 (26.89)	54.31 (27.20)
Unmet gout treatment need	45.69 (20)	50.30 (19.18)
Well-being during attack	46.67 (24.03)	40.6 (23.14)
Gout concern during attack	51.04 (24.24)	43.53 (23.35)

## Outcome measures

*Drop out (primary outcome measure) and recruitment (secondary outcome measure)*

Dropout rate (%)	5
Recruitment rate (%)	2.2

### *Other secondary outcome measures*

	Control (n=30)	Active (n=30)
Number withdrawn	2(6.67%)	1(3.33%)
Number of gout flares 4 weeks post randomisation, median (IQR)	1 (0 to 2)	1 (0 to 2)
Duration of self-reported gout flare in days, mean (SD)	7.06 (8.14)	7.00 (4.52)
Number of unused capsules returned, median (IQR)	58 (27 to 154)	57 (26 to 100)

Other secondary outcome measures relating to recruitment can be found in the participant flowchart.

Severity of gout flares not reported due to missing data and very long flares reported by participants affecting the validity of the findings.

## Adverse events

### *Serious adverse events and adverse events*

	Control (n=30)	Active (n=30)
<b>Serious Adverse Event</b>		
Infection (gastroenteritis (viral))	1	0
<b>Adverse Event (Organ system)</b>		
Gastrointestinal	3	5
Oral	0	1
Infection (viral)	1	1
Eye	0	2
ENT	2	0
Genitourinary	2	0
Injury/accident	2	1
Respiratory	1	0
Nervous System	2	0
Musculoskeletal	2	1