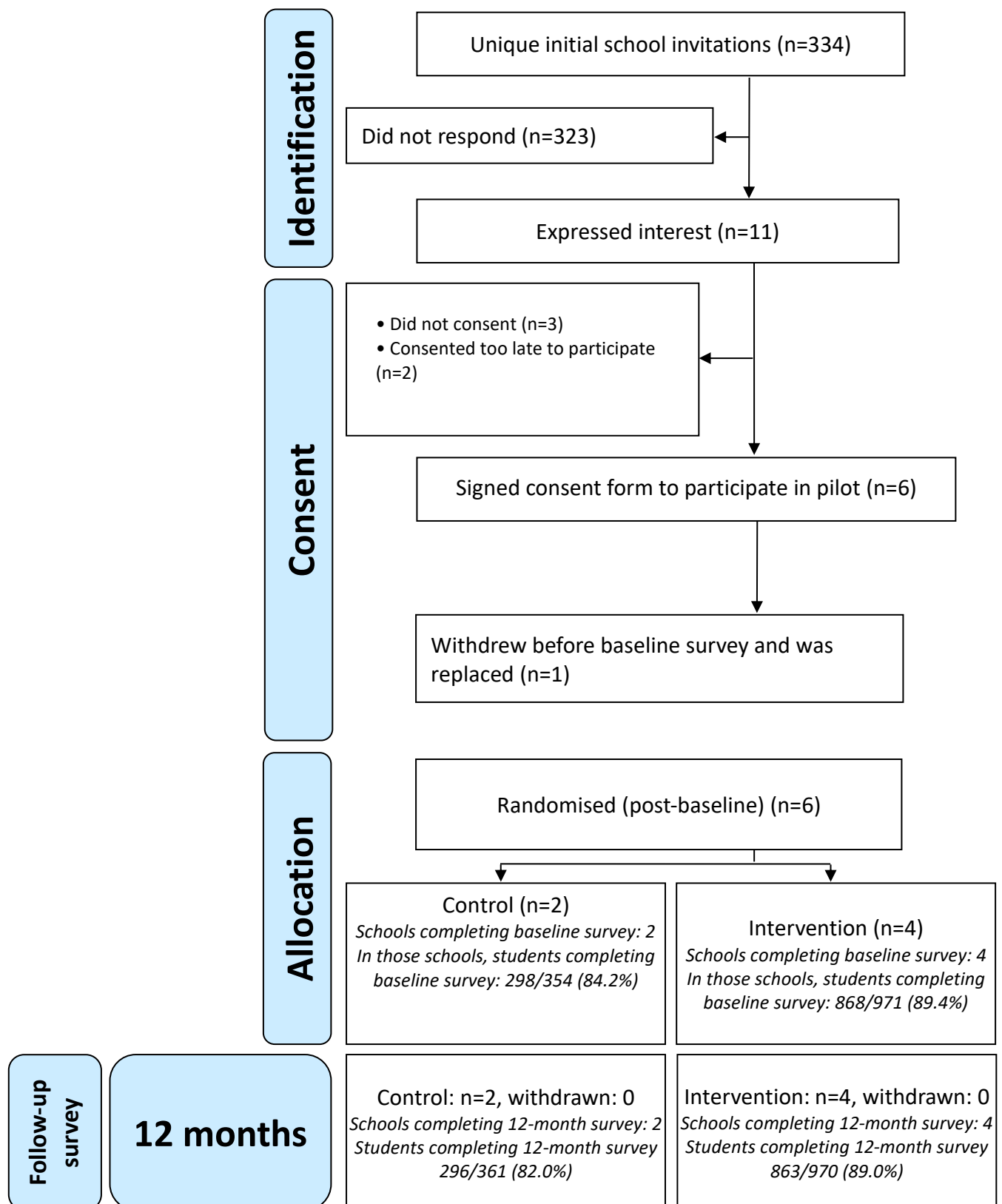


Figure 1: Participant flow



**Table 1: Pilot school characteristics by trial arm**

School characteristics		Intervention	Control	Overall
		(4 schools)	(2 schools)	(6 schools)
School type	Academy converter (mainstream)	3	1	4
	Academy sponsored (mainstream)	0	1	1
	Community school	1	0	1
Ofsted rating <sup>1</sup>	Good	4	2	6
2017 attainment 8 score <sup>1</sup> mean (SD)		47.3 (6.80)	51.1 (2.75)	48.6 (6.03)
Value added score <sup>1</sup> mean (SD)		0.16 (0.40)	0.50 (0.15)	0.17 (0.41)
Proportion of students entitled to FSM <sup>1</sup> mean (SD)		30.25 (4.64)	23.2 (8.35)	27.9 (6.98)
School size <sup>1</sup> mean (SD)		1342 (355.22)	1193 (390.50)	1292 (374.08)
IDACI score <sup>2</sup> mean (SD)		0.130 (0.04)	0.183 (0.06)	0.147 (0.05)
<b>Student characteristics (survey)</b>				
Age, mean (SD)		12.79 (0.41)	12.81 (0.40)	12.80 (0.40)
Sex, n (%)	Male	428 (49.3)	166 (55.7) <sup>h</sup>	594 (50.9)
	Female	431 (49.7)	131 (44.0)	562 (48.2)
	Prefer not to say	6 (0.7)	1 (0.3)	7 (0.6)
	Missing	3 (0.3)	0 (0.0)	3 (0.3)
Gender, n (%)	Boy	428 (49.3)	166 (55.7)	594 (50.9)
	Girl	424 (48.8)	129 (43.3)	553 (47.4)
	Trans boy	2 (0.2)	0 (0.0)	2 (0.2)
	Trans girl	1 (0.1)	0 (0.0)	1 (0.1)

Ethnicity, n (%)	Non-binary	1 (0.1)	1 (0.3)	2 (0.2)
	Other	2 (0.2)	0 (0.0)	2 (0.2)
	Unsure	5 (0.6)	1 (0.3)	6 (0.5)
	Prefer not to say	3 (0.3)	0 (0.0)	3 (0.3)
	Missing	2 (0.2)	1 (0.3)	3 (0.3)
	White	538 (62.0)	86 (28.9)	624 (53.5)
	Mixed	105 (12.1)	29 (9.7)	134 (11.5)
	Asian/Asian British	97 (11.2)	151 (50.7)	248 (21.3)
	Black African/Black Caribbean/Black British	90 (10.4)	20 (6.7)	110 (9.4)
	Other	33 (3.8)	8 (2.7)	41 (3.5)
Sexual identity, n (%)	Missing	5 (0.6)	4 (1.3)	9 (0.8)
	Straight or heterosexual	773 (89.1)	257 (86.2)	1030 (88.3)
	Gay or lesbian	7 (0.8)	1 (0.3)	8 (0.7)
	Bisexual	19 (2.2)	2 (0.7)	21 (1.8)
	Other	10 (1.2)	2 (0.7)	12 (1.0)
	Unsure/questioning	35 (4.0)	5 (1.7)	40 (3.4)
	Prefer not to say	19 (2.2)	15 (5.0)	34 (2.9)
	Missing	5 (0.6)	16 (5.4)	21 (1.8)
Religion, n (%)	None	466 (53.7)	86 (28.9)	552 (47.3)
	Christian	213 (24.5)	30 (10.1)	243 (20.8)
	Jewish	8 (0.9)	0 (0.0)	8 (0.7)
	Muslim/Islam	64 (7.4)	4 (1.3)	68 (5.8)

	Hindu	45 (5.2)	18 (6.0)	63 (5.4)
	Buddhist	4 (0.5)	1 (0.3)	5 (0.4)
	Sikh	2 (0.2)	139 (46.6)	141 (12.1)
	Unsure	46 (5.3)	13 (4.4)	59 (5.1)
	Other	10 (1.2)	1 (0.3)	11 (0.9)
	Missing	10 (1.2)	6 (2.0)	16 (1.4)
Family structure, n (%)	Two parents	589 (67.9)	229 (76.8)	818 (70.2)
	Lone mother	192 (22.1)	43 (14.4)	235 (20.2)
	Lone father	14 (1.6)	1 (0.3)	15 (1.3)
	Reconstituted	57 (6.6)	17 (5.7)	74 (6.3)
	Other	13 (1.5)	4 (1.3)	17 (1.5)
	Missing	3 (0.3)	4 (1.3)	7 (0.6)
Family affluence scale, mean (SD)		7.93 (2.16)	8.52 (2.08)	8.08 (2.15)
Sexual debut	Yes	7 (0.8)	2 (0.7)	9 (0.8)
	Missing	69 (7.9)	29 (9.7)	98 (8.4)

1 data retrieved from [www.compare-school-performance.service.gov.uk](http://www.compare-school-performance.service.gov.uk) , retrieved on 6/9/19

2 IDACI score by school post-code from [imd-by-postcode.opendatacommunities.org](http://imd-by-postcode.opendatacommunities.org), retrieved on 6/9/19

**Table 2: Effects on secondary outcomes at follow-up**

Secondary outcome measure	Control	Intervention	Effect estimates and 95% confidence intervals			
			<i>Unadjusted</i>	<i>95% CI</i>	<i>Adjusted</i>	<i>95% CI</i>
Pregnancy (girls), n (%)	0 (0.0)	1 (0.2)	-	-	-	-
Unintended Pregnancy (girls), n (%)	0 (0.0)	1 (0.2)	-	-	-	-
Initiation of pregnancy (boys), n (%)	1 (0.6)	2 (0.5)	OR=0.75	(0.1 ,8.3)	OR=0.51	(0.0 ,6.8)
Diagnosed STIs, n (%)	14 (4.7)	38 (4.4)	OR=0.93	(0.5 ,1.7)	OR=1.17	(0.6 ,2.3)
Vaginal sexual debut with partner of opposite sex, n (%)	8 (2.7)	39 (4.5)	OR=1.70	(0.6 ,4.9)	OR=2.06	(0.6 ,7.2)
Sexual debut with partner of same sex, n (%)	1 (0.3)	11 (1.3)	OR=3.81	(0.5 ,29.6)	OR=4.40	(0.5 ,35.4)
Age of vaginal sexual debut with partner of opposite sex, mean (SD)	13.7 (0.5)	13.6 (0.5)	MD=-0.13*	(-0.5 ,0.3)	MD=-0.10*	(-0.5 ,0.3)
Number of heterosexual partners, mean (SD)	0.03 (0.29)	0.35 (4.78)	MD=0.33	(-0.7 ,1.3)	MD=0.41	(-0.7 ,1.5)
No contraception at first vaginal sex, n (%)	0 (0.0)	7 (0.9)	-	-	-	-
No contraception at last vaginal sex, n (%)	1 (0.4)	5 (0.6)	OR=1.17	(0.2 ,8.1)	OR=1.77	(0.2 ,17.3)
Non-volitional sex, n (%)####	0 (0.0)	4 (0.5)	-	-	-	-

\* Derived from age as reported by 7 control students and 29 intervention students

- Effect could not be estimated because of zero numerator

**Table 3. Serious adverse events**

Event	Intervention schools				Control schools		Overall
	1	2	3	4	1	2	
Death	0	0	0	0	0	Missing	0
Hospitalisation	1	0	1	2	0	Missing	4
Disability	0	0	0	0	0	Missing	0
Congenital abnormality	0	0	0	0	0	Missing	0
Life threatening illness	0	0	0	0	0	Missing	0
Total	1	0	1	2	0	Missing	4