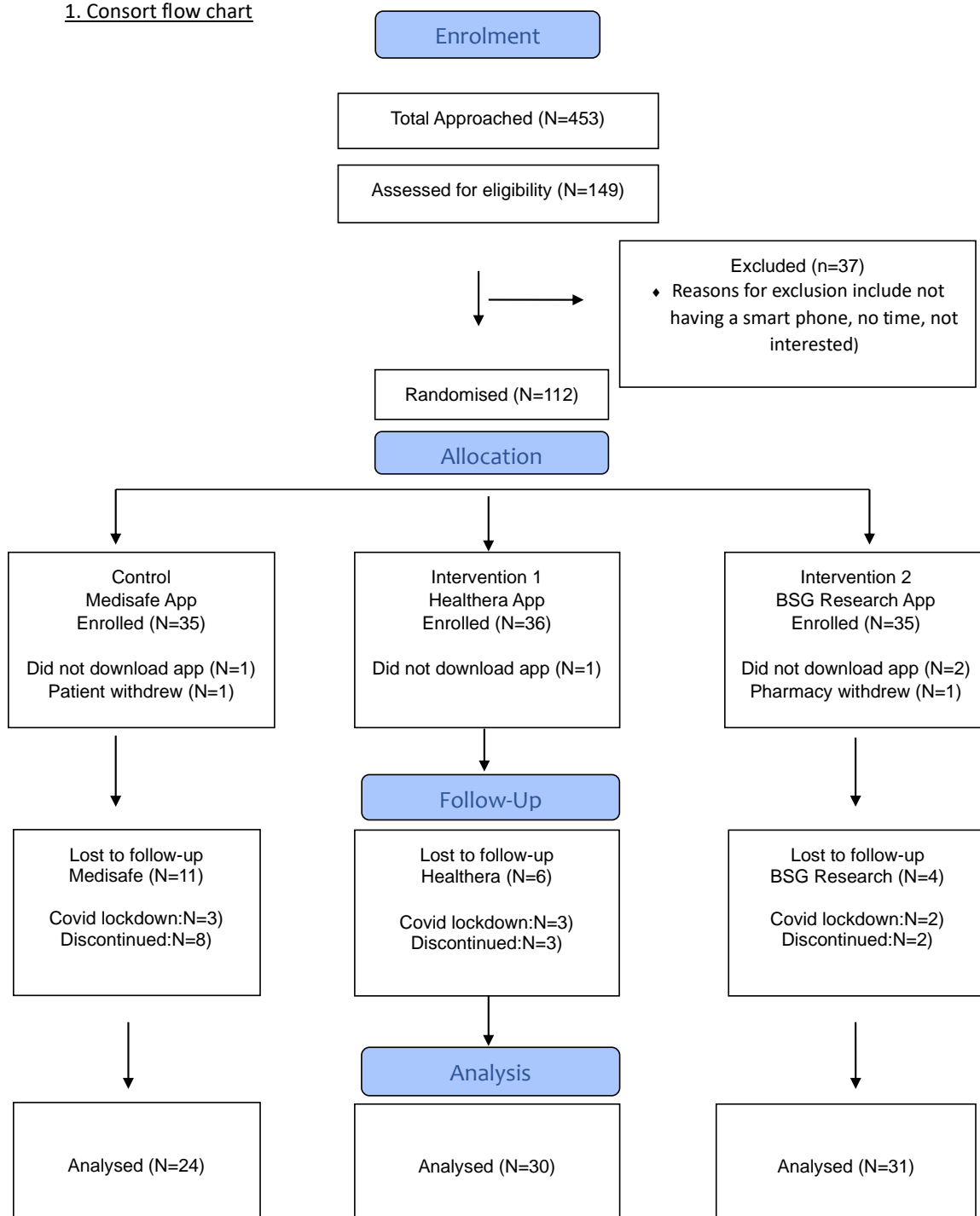


1. Consort flow chart



2. Baseline characteristics

Table 1 Participant characteristics at Baseline

Variable	Intervention 1 (Healthera) (N=36)	Intervention 2 (BSG) (N=35)	Control (Medisafe) (N=35)	P value
Index of Multiple Deprivation (IMD)				
2	13.9%	2.9%	11.4%	
3	22.2%	20.0%	20.0%	
4	22.2%	17.1%	31.4%	
5	41.7%	57.1%	34.3%	
6	-	2.9%	2.9%	
Age group				
30-39	1 (2.8%)	4 (11.4%)	4 (11.5%)	0.558
40-49	8 (22.2%)	4 (11.4%)	6 (17.1%)	
50-59	7 (19.4%)	10 (28.6%)	7 (20.0%)	
60-69	10 (27.8%)	12 (34.3%)	9 (25.7%)	
70-79	9 (25.0%)	5 (14.3%)	6 (17.1%)	
80+	0 (0%)	0 (0%)	1 (2.9%)	
*Not recorded	1 (2.78%)	-	2 (5.7%)	
Gender				
Male	23 (63.9%)	20 (57.1%)	22 (62.9%)	0.926
Female	13 (36.1%)	15 (42.9%)	13 (37.1%)	
Occupation				
Managerial/ professional	16 (45.7%)	12 (37.5%)	13 (39.4%)	0.375
Routine/manual	0 (0%)	5 (15.6%)*	2 (6.1%)	
Retired	14 (40%)	11 (34.4%)	8 (24.2%)	
Home Carer	1 (2.9%)	0 (0%)	2 (6.1%)	
Never worked/long term unemployed	0 (0%)	0 (0%)	1 (3%)	
Sick/disabled-unable to work	0 (0%)	0 (0%)	1 (3%)	
Other	4 (11.4%)	4 (12.5%)	6 (18.2%)	
BP medicines taken per day	5.49 (4.73)	3.8 (3.22)	5.17 (4.78)	0.224
Different pills per day	3.83 (2.53)	2.91 (1.98)	3.94 (2.80)	0.164
Medication Adherence (MARS)	22.89 (2.64)	23.20 (1.80)	22.62 (2.79)	0.613
Medication Adherence (% last month)	95.71 (8.15)	92.74 (15.84)	94.29 (10.92)	0.590
Medication Adherence (last 7 days)	6.74 (0.74)	6.65 (0.73)	6.51 (1.292)	0.608
EQ-5D-5L (Health today-5 items)	7.26 (2.38)	6.29 (1.70)	8.50 (3.60)	0.004
EQ-5D-5L (Health today- %)	79.86 (13.03)	80.83 (15.73)	74.37 (17.79)	0.182

Data reported as number (percentage); means (SD). IMD is calculated based on postcode of pharmacy; 2 low IMD (most deprived) to 6 high IMD (least deprived)

3. Outcome measures

Table 2. Difference between Trial arms at 3-month follow-up

Variable	Intervention 1 (Healthera)	Intervention 2 (BSG)	Control (Medisafe)	<i>P</i> value
Medication Adherence Rating Scale (MARS)	23.29 (2.18)	24.24 (1.55)	23.84 (1.34)	0.11
Medication Adherence (% last month)	97.92 (5.09)	97.79 (4.97)	96.84 (7.45)	0.82
Medication Adherence (% last seven days)	6.67 (2.44)	6.82 (0.61)	7.00 (0.00)	0.54
EQ-5D-5L (Health today-5 items)	6.50 (1.95)	6.58 (2.14)	7.88 (3.16)	0.73
EQ-5D-5L (Health today- %)	79.78 (21.92)	80.52 (15.66)	79.72 (15.58)	0.59
Systolic Blood Pressure (SBP)	132 (13.15)	129 (14.22)	127 (11.04)	0.69

Data are reported as Means and (SD). Analysis conducted for cases available.

Table 3. App feasibility survey responses

App Feasibility survey				
Survey queries	Intervention 1 (Healthera)	Intervention 2 (BSG)	Control (Medisafe)	Overall
Found the App easy to download/setup	85.0%	100%	95.2%	93.5%
Found the App functions easy to use	80.0%	95.2%	95.2%	90.3%
Enjoyed using the App	65.0%	66.7%	75.0%	68.9%
Experienced technical problems using App	45.0%	20.0%	0%	21.3%
Found the App irritating to use	45.0%	35.0%	14.3%	31.1%
Stopped using the App during the study	25.0%	30.0%	23.8%	26.2%
App made it easier to manage medication	50.0%	57.1%	71.4%	59.7%
App improved my medication adherence	60.0%	45.0%	52.4%	52.5%
Would recommend the App to others	65.0%	76.2%	76.2%	72.6%
Will continue to use the app in the future	45.0%	57.1%	57.1%	53.2%
Used the communication function	25.0%	14.3%	n/a	19.7%
Used the reorder function	45.0%	52.4%	n/a	48.7%

Data reported as percentages.

Table 4. Characteristics of patients and staff participating in semi-structured interviews.

Participants (Semi-structured interviews)					
Patient ID	Pharmacy IMD	Gender	App Group	Age	Occupation
OB102	4	Male	2	62	Professional
OH202	5	Male	2	47	Not reported
OK301	5	Male	1	43	Professional
OK302	5	Male	2	57	Retired
OK303	5	Male	2	60	Retired
OK306	5	Female	3	Not reported	Not reported
OK312	5	Male	1	71	Retired
OK313	5	Male	1	67	Professional
OK314	5	Male	3	47	Unemployed
OL406	2	Male	1	58	Professional
OL408	2	Male	3	65	Sick/disabled
OL501	3	Male	3	59	Professional
OL505	3	Female	1	77	Retired
ON603	4	Female	2	Not reported	Not reported
OP701	5	Female	3	70	Professional
OR802	3	Male	3	63	Professional
OR803	3	Female	1	Not reported	Retired
OS905	4	Male	1	75	Retired
OW1004	5	Female	2	65	Professional
OW1007	5	Female	2	74	Retired
OW1102	4	Male	1	42	Professional
OW1103	4	Female	3	60	Professional
Total		M=14 F= 8	Group 1 (N=8) Group 2 (N=7) Group 3 (N=7)	Mean = 61yrs	
Pharmacist ID		Gender		Age range	Pharmacy Role
PH01		Male		30-39	Dispenser
PH02		Female		40-49	Dispenser
PH02I		Female		40-49	Pharmacist
PH04		Male		30-39	Pharmacy Manager
PH05		Female		40-49	Dispenser
PH06		Male		40-49	Pharmacist
PH10		Female		40-49	Counter Assistant
PH14		Male		40-49	Pharmacist
Total	N=8	M=4 F=4			

IMD is calculated based on postcode of pharmacy; 2 low IMD (most deprived) to 6 high IMD (least deprived)

App Groups:1-Healthera, 2-BSG, 3-Medisafe

4. Adverse events

There were no adverse events associated with this study.