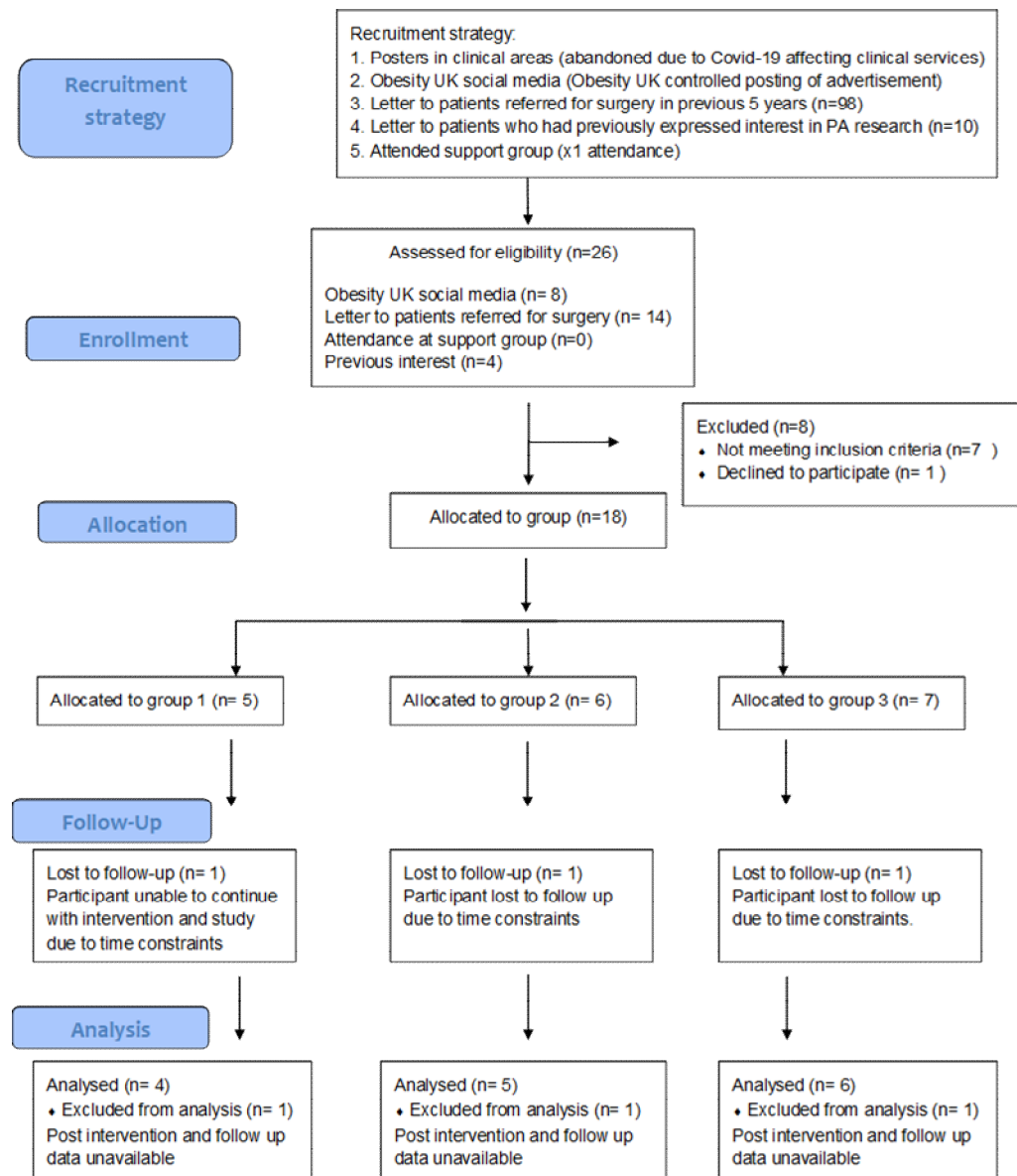


PARTICIPANT FLOW



BASELINE CHARACTERISTICS

Characteristic	n = 18 Mean (SD) Median	Range IQ range
Age	46.7 (9.29) 46.5	33-64 (38.75 -52.75)
Gender	Female (n=14) Male (n=4)	
Ethnicity	White, UK	
Past medical history:		
Cardiac	n=1 (5.6)	
Respiratory	n=4 (22.2)	
Hypersensitive	n=2 (11.1)	
Diabetes	n=0 (0)	
Diabetes in remission	n=3 (16.7)	
Musculoskeletal conditions	n=10 (55.6)	
Neurological conditions	n=2 (11.1)	
Photosensitive	n=2 (11.1)	
Type of surgery:		
RYGB	n=9	
Mini gastric bypass	n=6	
Sleeve gastrectomy	n=3	
	Mean (SD) Median	Range IQ range
Time since surgery (months)	20 (14.5) 18.5	3-50 11-23.75
Weight (kg)	99.4 (20.26)	54.5-126.3
Height (m)	1.62 (0.10)	1.54-1.90
BMI (kg/m ²)	36.4 (6.09) 35.45	22.1-47.0 33.9 – 40.5

OUTCOME MEASURES

N/A this was a feasibility study. Outcomes related to the feasibility of the study e.g. was it acceptable, what was the recruitment rate etc.

ADVERSE EVENTS

There were two adverse events as a result of irritation from the accelerometer strap. There were no serious adverse events.