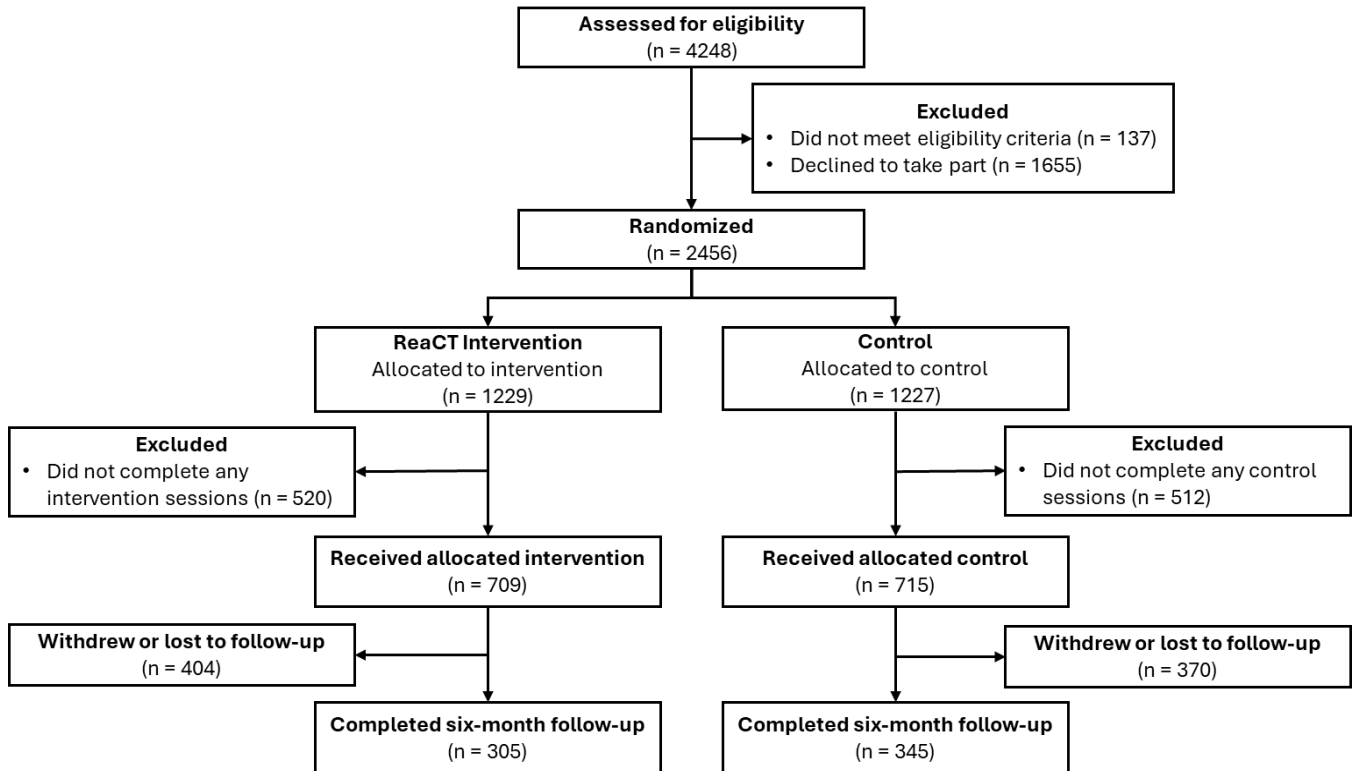
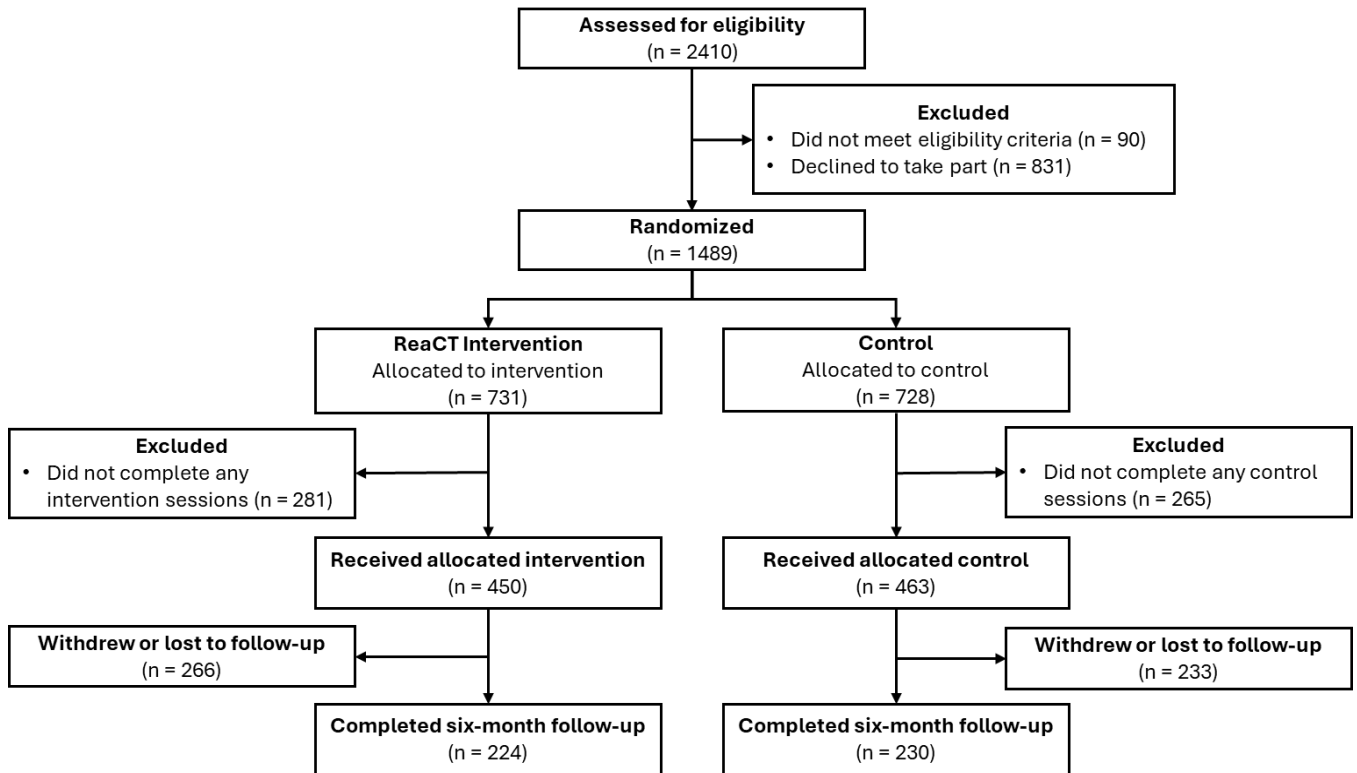


The BEACON Study – Basic Results Summary

Whole Study Cohort



MITT Cohort



BEACON Baseline Characteristics: Whole cohort

Characteristic		A (n = 1229)	B (n = 1227)
Age	Range	18 – 83	18 – 84
	Mean (SD)	51.57 (12.59)	51.53 (12.68)
Gender	Female n (%)	898 (73)	895 (72.9)
Education level	Secondary school (O-Level/GCSE)	238 (19.4)	230 (18.7)
	Post-secondary school (A-Level/NVQ3)	192 (15.6)	203 (16.5)
	Vocational qualification (NVQ4)	283 (23.1)	283 (23.1)
	Undergraduate degree	302 (24.5)	330 (26.9)
	Postgraduate degree	192(15.7)	156 (12.7)
	Doctorate (PhD)	20 (1.6)	25 (2)
Ethnicity	White	1187 (97)	1191 (97)
	Asian	33 (1)	18 (1)
	Black	8 (1)	14 (1)
	Other	1 (1)	5 (1)
Covid severity	Mild-moderate	1143 (93)	1141 (93)
	Severe (hospitalization)	86 (7)	86 (7)

BEACON Baseline Characteristics: MITT cohort

Characteristic		A (n = 450)	B (n = 463)
Age	Range	50 – 83	50-84
	Mean (SD)	60.36 (7.15)	60.07 (7.11)
Gender	Female n (%)	320 (69.1)	326 (70.4)
Education level	Secondary school (O-Level/GCSE)	106 (23.6)	89 (19.2)
	Post-secondary school (A-Level/NVQ3)	58 (12.9)	74 (16.0)
	Vocational qualification (NVQ4)	114 (35.3)	109 (23.5)
	Undergraduate degree	102 (22.7)	126 (27.2)
	Postgraduate degree	64 (14.2)	53 (11.4)
	Doctorate (PhD)	6 (1.3)	12 (2.6)
Ethnicity	White	336	371
	Asian	4	3
	Black	3	4
	Other	0	2
Covid severity	Mild-moderate	413 (89.2)	427 (92.2)
	Severe (hospitalization)	37 (8)*	36 (7.7)

* Missing n = 13 (2.8%)

BEACON MITT Cohort Outcomes Table

	ReaCT Group		Control Group		Mean difference (CI)
	Baseline Mean (SD) (n = 431)	Six months Mean (SD) (n = 207)	Baseline Mean (SD) (n = 463)	Six months Mean (SD) (n = 233)	
Primary outcome					
Executive function (Verbal Reasoning)	29.95 (10.53)	33.60 (12.72)	29.47 (11.63)	31.52	2.43 (0.76,4.10))
Secondary cognitive outcomes					
Spatial Working Memory	4.39 (2.20)	4.17 (2.46)	4.53 (2.05)	4.54 (2.30)	0.18 (-0.58, 0.21)
Numerical Working Memory	5.67 (1.62)	5.70 (1.35)	5.60 (1.41)	5.95 (1.63)	0.30 (-0.58, 0.02)
Digit Vigilance Accuracy	89.29 (16.55)	90.32 (17.13)	88.56 (16.62)	90.25 (15.16)	1.68 (-4.92, 1.56)
Digit Vigilance Reaction Time	76.57 (29.19)	71.15 (27.24)	77.78 (28.59)	74.57 (26.51)	0.99 (-6.63, 4.66)
Delayed Picture Recognition Reaction Time	1446.13 (517.57)	1281.48 (316.17)	1438.75 (668.25)	1247.82 (297.93)	-116.94 (-226.48, -11.14)
Episodic Memory	77.99 (11.50)	83.94 (10.24)	77.72 (11.45)	82.56 (11.11)	2.43 (0.76, 4.10)
Secondary non-cognitive outcomes					
Function (IQCODE)	3.56 (0.47)	3.40 (0.46)	3.60 (0.48)	3.39 (0.57)	0.82 (0.004, 0.159)
Depression (PHQ9)	8.97 (5.49)	8.27 (5.57)	9.59 (6.07)	8.53 (5.92)	-0.18 (-1.01, 0.65)

Summary Table of Serious Adverse Events

SAE	Related	Expected	Reported as RUSAE
Lung cancer/ Malignant neoplasm diagnosis	No	No	No
Appendectomy	No	No	No
Suicidal ideation	No	No	No
Transient Ischemic Attack (TIA)	No	No	No
Stroke	No	No	No

Transient Ischemic Attack (TIA)	No	No	No
Prostate cancer metastatic diagnosis	No	No	No
Pneumonia	No	No	No
Pneumonia and Bronchitis	No	No	No