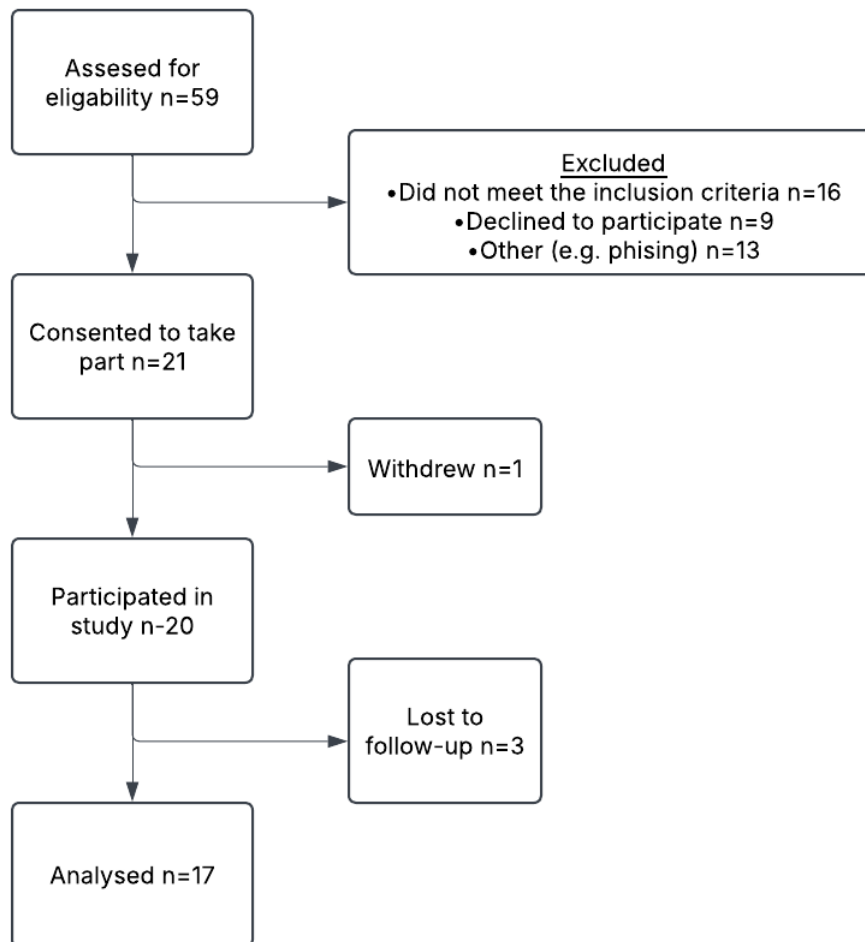


Life Threads TBI

Basic results summary

Participant Flow:



Baseline Characteristics:

Table 1: Sample Demographics

Variable	Category	FG1		LTA + FG2	
		Family member (n=20)	Injured person (n=17)	Family member (n=17)	Injured person (n=14)
First language	English	20	15*	17	14
Ethnicity	White	19	17	16	14
	Mixed	1	0	1	0
Gender	Male	3	13	3	11
	Female	17	4	14	3
Age	25-34	2	4	1	2
	35-44	7	5	7	5
	45-54	1	3	1	3
	55-64	4	2	3	2
	65-74	5	1	5	1
	75-84	1	2	0	1
Relationship to injured person	Spouse	10		8	
	Parent	5		4	
	Child	3		3	
	Sibling	2		2	
Sexual orientation	Heterosexual/ Straight	20	16	17	13
	Lesbian/Gay	0	1	0	1
Marital status	Married	18	11	15	9
	Living with partner	2	2	2	1
	Divorced or separated	0	1	0	1
	Single	0	3	0	3
Disability	No	20		17	
Religion	No religion	7	9	7	8
	Christian	13	7	10	5
	Prefer not to say / unknown	0	1	0	1

Table 2: Injury characteristics

Variable	Category	FG1	LTA + FG2
Severity of Injury	Mild	1	1
	Moderate	2	2
	Severe	13	10
	Unknown	1	1
Time since injury	2 - 5 years	9	7
	6 - 8 Years	2	1
	9 - 20 years	4	4
	21-30 years	2	2
Living arrangements	Lives at home requires full time care	1	1
	Long-term care facility	1	1
	Long-term care facility (now deceased)	1	1
	Lives independently from participant	5	4
	Lives at home with participant	8	7

Outcome Measures

The primary outcome measure was stated as: 'Acceptability and feasibility measured using data gathered through qualitative interviews and focus groups to remain open to participants' views and experiences pertinent to the study aims during the study'.

At a macro level the data were examined for explicit reference to benefit and if the LTA added value as a means to engage with their story. At a micro level interpretive themes were identified that explain why, and why not, the LTA was found to support family members' processes of adjustment.

Did the participant find LTA beneficial?	Yes - n = 11
Did the LTA 'add value'	Yes - n = 13

Adverse Events

Serious adverse events	0	There were no serious adverse events associated with this study.
Adverse Events	1	n = 1 participant required a debrief with a psychologist after their individual interview which was classed as a AE in this study.