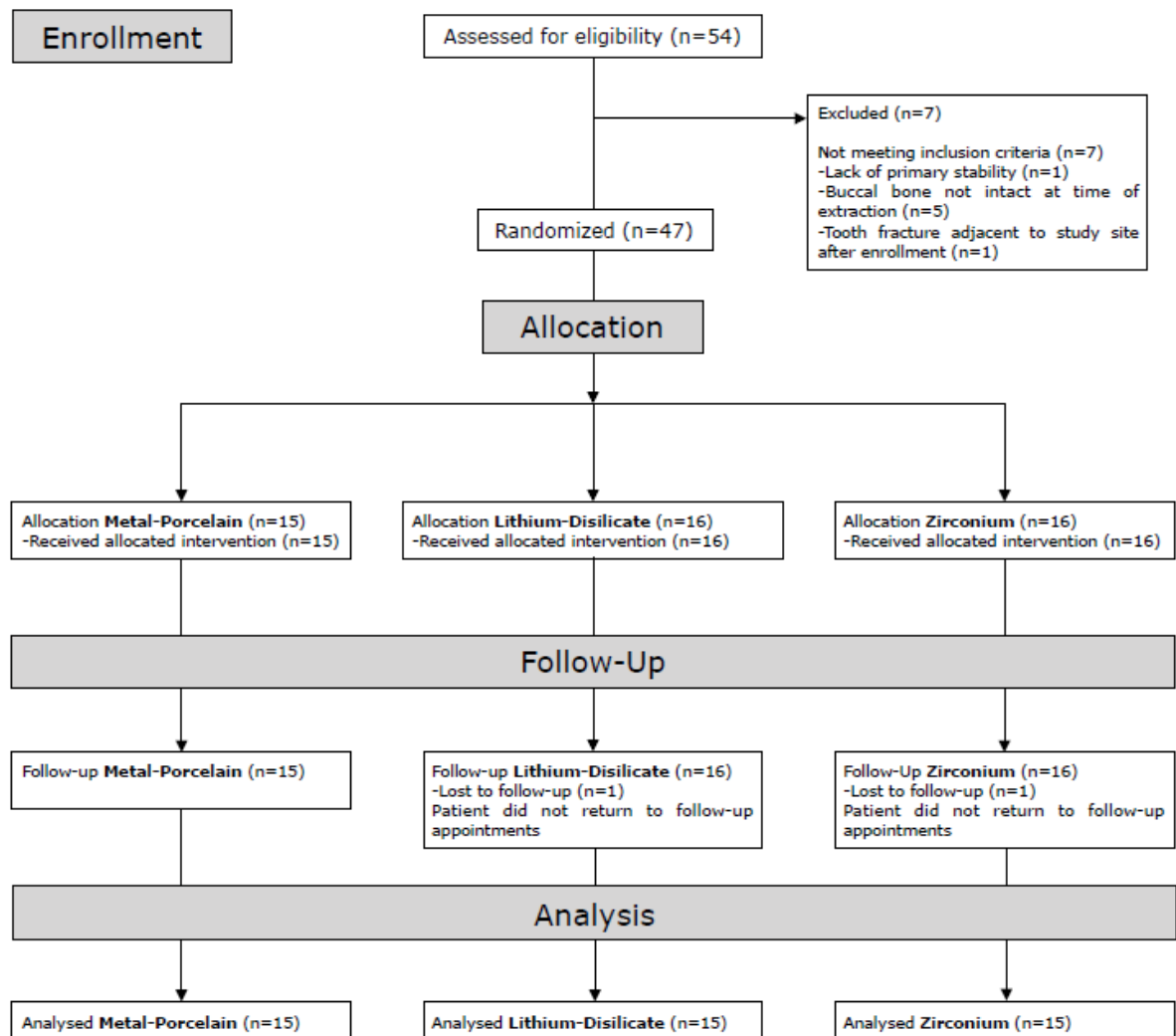


1. Patient's flow chart.



2. Patient's characteristics:

	Metal Porcelain (C) [n=15] (%)	L. Disilicate (T1) [n=15] (%)	Zirconium (T2) [n=15] (%)
Males	9 (60.00)	3 (20.00)	7 (46.66)
Females	6 (40.00)	12 (80.00)	8 (53.33)
Age at implant insertion (mean, SD)	45.53 (13.95)	48.13 (13.88)	47.40 (16.23)
Extraction due to tooth/root fracture	4 (26.66)	7 (46.66)	8 (53.33)
Extraction due to extensive carious lesion.	6 (40.00)	4 (26.66)	2 (13.33)
Extraction due to endodontic pathology.	4 (26.66)	4 (26.66)	5 (33.33)
Extraction due to retained root	1 (6.66)	0 (0)	0 (0)

3. Study outcomes & measurements:

- **Full-mouth plaque score (%), Full-mouth bleeding score (%), WES, PES and VAS scores of C, T1 and T2 restorations at t0 and t12.**

	Metal-porcelain "C" (n=15)		L. Disilicate "T1" (n=15)		Zirconium "T2" (n=15)	
	t0	t12	t0	t12	t0	t12
FMPS %	18.0 (8.5–30.0)	23.0 (10.0–34.25)	19.0 (5.75–24.75)	20.0 * (10.5–36.75)	18.0 (13.0–21.75)	29.0 * (16.0–34.75)
FMBS %	12.0 (5.75–19.0)	12.0 (7.0–24.25)	6.0 (4.25–19.75)	10.0 * (5.0–24.25)	10.0 (5.0–13.5)	12.0 * (7.75–15.75)
WES	6.0 (4.0–7.0)	6.0** (4.0–7.75)	8.0 (7.0–8.0)	8.0 (8.0–8.75)	7.0 (6.0–8.0)	7.0 (6.0–8.0)
PES	6.0 (4.25–6.0)	7.0 * (5.25–8.0)	7.0 (6.0–8.75)	8.0 * (7.0–9.75)	8.0 (6.25–8.0)	8.0 * (7.0–9.0)
VAS	9.0 (8.0–9.0)	9.0 (8.25–9.75)	10.0 (9.0–10.0)	10.0 (9.25–10.0)	8.0 (7.25–9.0)	8.0** (8.0–9.0)

FMPS: Full mouth plaque Score; FMBS: full mouth bleeding-scores; VAS: visual analogue scale; PES: Pink Aesthetic Score; WES: White Aesthetic Score. Median (25%–75%).
 * T0 vs T12m (Intragroup between times; Wilcoxon signed Rank test). p value ≤ 0,05.
 ** vs L. Disilicate (Between groups at T12m; Kruskal Wallis + Tukey)

▪ **Modified success rate at 12 months**

	Metal–Porcelain “C” (n=15)				L. Disilicate “T1” (n=15)				Zirconium “T2” (n=15)			
	t0		t12		t0		t12		t0		t12	
	PES	WES	PES	WES	PES	WES	PES	WES	PES	WES	PES	WES
Patient 1	6	6	8	7	7	9	9	9	3	4	5	4
Patient 2	6	6	9	6	9	8	10	8	7	4	7	4
Patient 3	5	8	5	8	10	8	10	8	8	8	9	8
Patient 4	4	5	7	4	3	6	6	8	8	8	10	8
Patient 5	4	9	8	8	7	7	9	7	9	9	10	9
Patient 6	5	6	7	6	6	7	7	7	6	7	7	7
Patient 7	6	7	8	7	7	8	7	8	8	6	8	6
Patient 8	7	4	5	3	10	9	10	9	9	2	9	3
Patient 9	6	1	7	1	4	4	6	5	8	7	9	7
Patient10	7	4	8	4	7	8	7	9	7	6	9	6
Patient 11	1	3	3	4	7	8	8	8	8	8	8	8
Patient 12	7	6	8	6	8	8	8	8	8	9	8	9
Patient 13	6	2	6	2	6	9	8	9	10	10	10	10
Patient 14	4	8	5	8	6	6	6	8	4	6	4	7
Patient 15	6	7	6	8	9	8	10	8	4	7	4	8
Modified success “%”	33.33		46.66		86.67		93.33		66.67		66.67	
Modified success “n”	5/15		7/15		13/15		14/15		10/15		10/15	

- Intragroup comparison of values obtained in the 3 ceramic groups on the day of placement and revision at 12 months.

	Metal–Porcelain “C” (n=15)		p-value (t0 vs. t12 intragroup)	Δ	L. Disilicate “T1” (n=15)		p-value (t0 vs. t12 intragroup)	Δ	Zirconium “T2” (n=15)		p-value (t0 vs. t12 intragroup)	Δ
	t0	t12			t0	t12			t0	t12		
Pm	3.53 ± 1.69	4.07 ± 1.78	0.006 p-T		3.03 ± 1.57	3.63 ± 1.53	<0.001 p-T		3.07 ± 1.33	3.63 ± 1.11	<0.001 W	
Pd	2.50 ± 1.54	2.83 ± 1.50	0.016 W		2.63 ± 0.74	3.10 ± 0.78	0.002 p-T		2.60 ± 1.42	2.87 ± 1.20	0.031 W	
CLm	11.13 ± 1.85	11.20 ± 1.97	1.0 W		9.93 ± 1.28	9.87 ± 1.30	1.0 W		10.67 ± 1.51	10.77 ±1.60	0.50 W	
CLi	9.60 ± 1.50	9.60 ± 1.64	1.0 W		9.17 ± 1.05	9.07 ± 1.15	0.652 W		9.53 ± 1.34	9.40 ± 1.42	0.297 W	
CLd	9.90 ± 1.79	10.73 ± 3.24	0.125 W		8.93 ± 1.01	8.90 ± 0.99	0.875 W		9.60 ± 1.30	9.67 ± 1.30	0.375 W	
FBICm	-0.73 ± 0.65	-0.35 ± 0.83	<0.001 W		-1.43 ± 0.83 *	-1.07 ± 0.77	<0.001 p-T		-1.29 ± 0.82	-0.79 ± 0.79	<0.001 p-T	
FBICd	-0.50 ± 0.62	-0.30 ± 0.68	0.008 W		-1.31 ± 0.99 *	-0.99 ± 0.87 *	<0.001 p-T		-1.23 ± 0.71 *	-0.90 ± 0.74	<0.001 p-T	
FBIC m-d average	-0.62 ± 0.51	-0.32 ± 0.55	0.142 t-T	0.29 ± 0.21	-1.37 ± 0.88 *	-1.03 ± 0.78 *	0.276 t-T	0.34 ± 0.23	-1.26 ± 0.75	-0.84 ± 0.75	0.140 t-T	0.42 ± 0.28

Pm: mesial papilla; Pd: distal papilla; CLm: crown length mesial; CLi: crown length implant; CLd: crown length distal. FBICm: mesial first bone-implant contact. FBICd: distal first bone-implant contact. FBIC m-d average: mesial-distal average first bone-implant contact. t0-t12 intragroup, p-T: paired T-test; W: Wilcoxon signed Rank test; t-T: T-test. Intergroups, One Way ANOVA + Tukey test, *: p<0.05 vs Metal–Porcelain.

- Intergroup comparison at t12 months.

	Metal–Porcelain “C” (n=15)	L. Disilicate “T1” (n=15)	Zirconium “T2” (n=15)	p-value
Pm	4.07 ± 1.78	3.63 ± 1.53	3.63 ± 1.11	0.717 KW
Pd	2.83 ± 1.50	3.10 ± 0.78	2.87 ± 1.20	0.803 OWA
CLm	11.20 ± 1.97	9.87 ± 1.30	10.77 ± 1.60	0.090 OWA
CLi	9.60 ± 1.64	9.07 ± 1.15	9.40 ± 1.42	0.655 KW
CLd	10.73 ± 3.24	8.90 ± 0.99	9.67 ± 1.30	0.133 KW
Pm: mesial papilla; Pd: distal papilla; CLm: crown length mesial; CLi: crown length implant; CLd: crown length distal. OWA: One Way Anova. KW: Kruskal-Wallis Test.				

4. **Adverse events:**

No adverse event to report for this study.