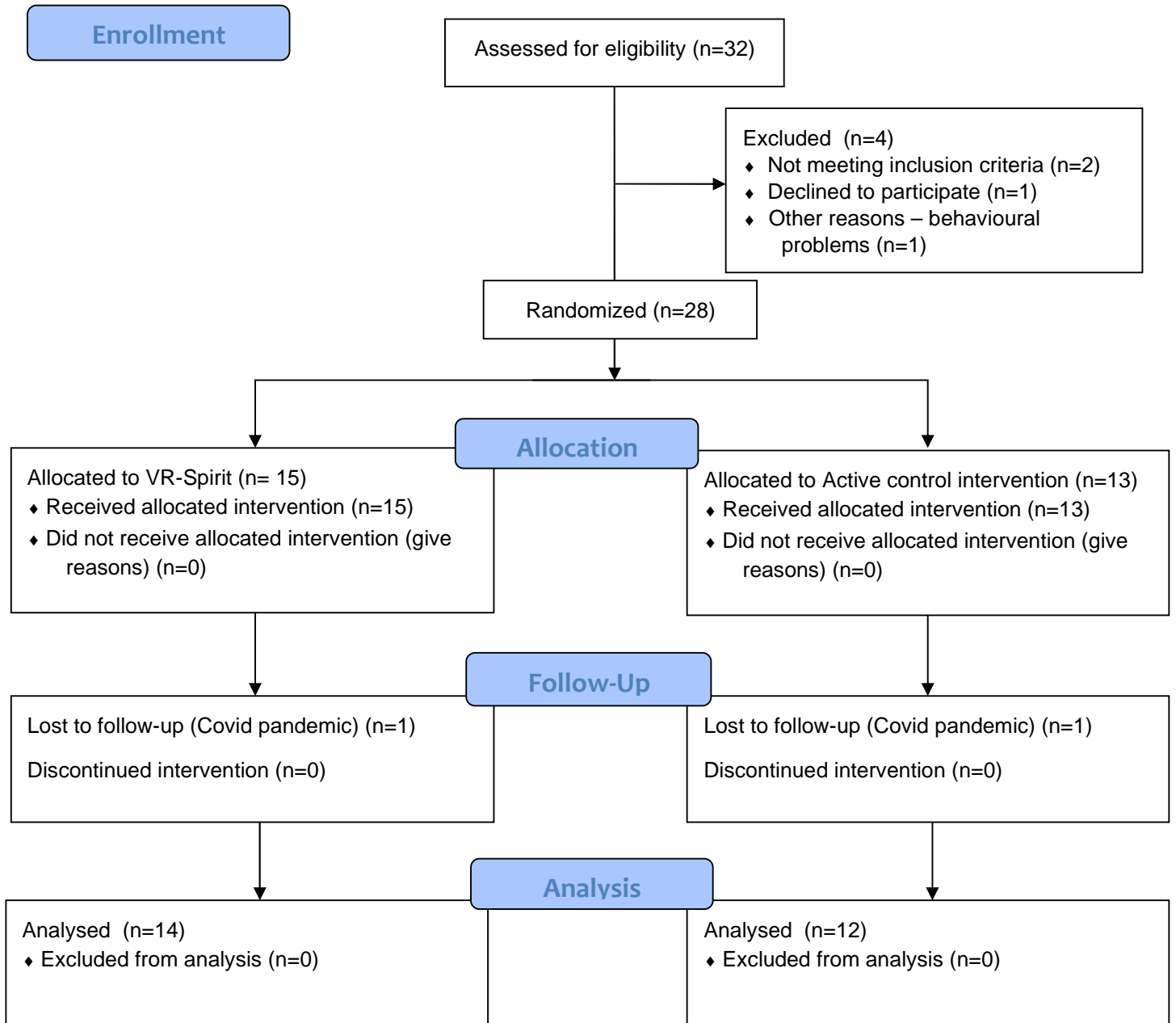


Results trial ISRCTN22332873: “Virtual reality social prediction training for pediatric patients with cerebellar diseases”



Baseline Characteristics of the two samples

		VR-Spirit	Active Control Group
<i>Gender</i>	M:F	11:4	10:3
<i>Age</i>	Range	7.4-25.6	7.4-25.6

<i>IQ</i>	Mean (SD)	13.4 (3.8)	12.8 (5.2)
	Range	46-137	46-120
	Mean (SD)	72 (26)	67 (21)

Outcome measures

Primary outcome measures

	VR-Spirit			Active Control Group		
	T0	T2	T3	T0	T2	T3
<i>VR-Prediction score: Mean (SD)</i>	32.9 (8.4)	51.3 (5.2)		34.4 (10.5)	37.5 (8.1)	
<i>Action prediction Beta: Mean (SD)</i>	-0.03 (0.71)	0.25 (0.51)	0.26 (0.52)	-0.08 (0.53)	-0.05 (0.59)	-0.21 (0.54)

Secondary outcome measures

	VR-Spirit			Active Control Group		
	T0	T2	T3	T0	T2	T3
<i>Implicit learning (Action prediction task)</i>						
Familiarization phase (accuracy)	93%	94%	93%	91%	91%	92%
<i>NEPSY-II scaled scores: Mean (SD)</i>						
<i>Social cognition</i>						
Theory of Mind	4.7 (3.8)	7.3 (3.8)	7.7 (4.3)	6.2 (4.5)	6.8 (3.9)	5.5 (4.3)
Affect recognition	5.8 (4.1)	7.3 (4.5)	7.6 (3.6)	5.4 (3.1)	6.5 (3.3)	5.5 (3.6)
<i>Executive functions</i>						
Visual attention	4.3 (4.0)	5.7 (5.1)	7.0 (5.6)	4.5 (3.7)	6.3 (4.0)	5.8 (4.8)
Inhibition	5.6 (3.7)	7.9 (3.4)	8.7 (3.6)	4.8 (2.4)	5.8 (3.3)	6.3 (3.4)
<i>Visuospatial processing</i>						
Picture and Geometric puzzles Mean	5.5 (4.2)	7.0 (4.9)	7.7 (5.2)	5.6 (3.2)	7.3 (4.1)	7.3 (4.2)
<i>Memory</i>						
Memory for drawings	3.4 (3.7)	6.0 (4.8)	6.4 (5.1)	3.5 (3.9)	6.6 (4.6)	6.5 (4.6)
<i>Sensorimotor functions</i>						
Tapping	8.2 (4.6)	8.5 (4.7)	9.4 (4.5)	8.5 (3.5)	8.3 (3.5)	8.7 (3.5)
<i>CBCL T-scores: Mean (SD)</i>						
Anxious/Depressed	60 (6)		57 (8)	59 (10)		59 (8)

<i>Social withdrawal</i>	58 (9)	61 (11)	58 (7)	60 (7)
<i>Somatic complaints</i>	59 (9)	56 (8)	58 (8)	57 (7)
<i>Social problems</i>	63 (10)	61 (9)	63 (6)	63 (7)
<i>Thought problems</i>	59 (10)	57 (10)	59 (10)	57 (8)
<i>attention problems</i>	60 (11)	60 (10)	60 (5)	60 (6)
<i>Rule-breaking behaviours</i>	55 (7)	55 (7)	58 (9)	60 (8)
<i>Aggressive behaviours</i>	57 (9)	54 (7)	54 (18)	60 (11)
<i>Quality of Life (TACQOL)</i>	Non-available			

Note: TACQOL results are non-available since most patients had intellectual delay and were not able to provide reliable answers and to fulfil the questionnaire.

Adverse Events

There were no adverse events associated with this trial.