

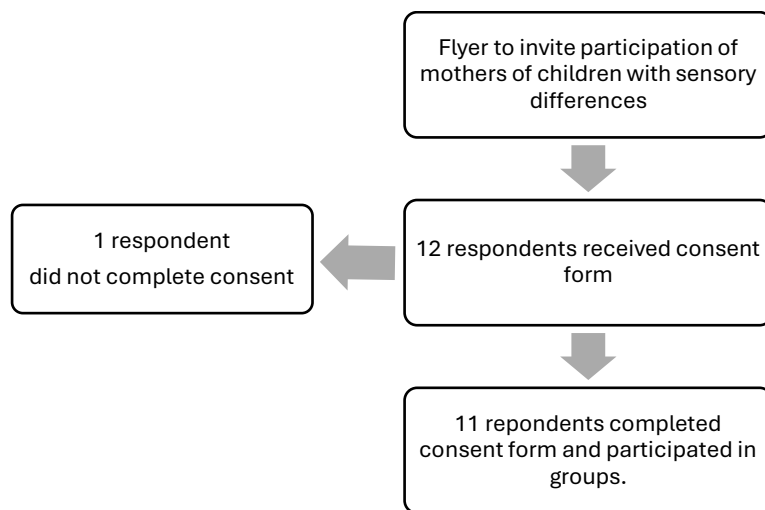
Basic Results

Coaching mothers of children with sensory integration difficulties: a pre-feasibility collaborative service development

<https://doi.org/10.1186/ISRCTN14915155>

Participant Flow Chart

Figure 1. Participant flow chart



Baseline Characteristics

Table 1. Baseline Characteristics

	Demographic	Mean (SD) or n (%)
Child	Child age	8.4 (18)
	Child gender	
	- Male	8 (73)
	- Female	3 (27)
	White British	11 (100)
	Co-morbid disorders, clinical diagnosis	
	- Autism Spectrum Disorder	8 (73)
	- Attention Deficit Disorder	4 (36)
	- Anxiety	6 (55)
	- Selective Mutism	1 (9)
	- No diagnosis	1 (9)
	Total Sensory Processing Measure: T-Score	73.45 (7.92)
Mother	Mothers age	38.10 (5.6)
	Highest level of education	
	- Completed A levels or equivalent qualifications	3 (27)
	- Undergraduate degree/ Higher education qualifications	5 (45)
	- Postgraduate degree	3 (27)
	Parent living alone	3 (27)

^a Parent report

Outcome measures

Table 2. Changes in child and mother scores ^a

	T1 Mean (SD)	T2 Mean (SD)	Z score	p	Effect size
COPM	2.72	4.94	-2.80	<.01**	.85
Performance	(0.93)	(2.04)			
COPM	2.18	5.12	-2.81	<.01**	.85
Satisfaction	(0.91)	(1.79)			
PSI-SF^c	85.27 (16.74)	77.27 (18.31)	-2.24 ^b	.03*	.68
Parent					
Distress					
PSI-SF^c	86.09 (15.47)	79.00 (18.57)	-1.99 ^b	<.05*	.61
Parent Child					
Difficult					
Interaction^c					
PSI-SF^c	95.73	90.18	-2.03 ^b	.04*	.61
Difficult	(5.73)	(9.42)			
Child					
PSI-SF Total^c	92.36	84.82	-1.95 ^b	.05	.59
	(11.00)	(15.21)			
PSOC	69.73	72.64 (11.66)	-.67 ^B	.51	.20
	(8.97)				

^a Wilcoxon Signed Rank

^b Based on negative ranks

^c Percentile Score

*P<0.05, ** P<0.01

Abbreviations: COPM - Canadian Occupational Performance Measure, PSI-SF - Parent Stress index 4 - Short Form, PSOC - Parent Sense of Competence.

Adverse Events

No adverse events reported

Report compiled by Susan Allen 09.09.2024