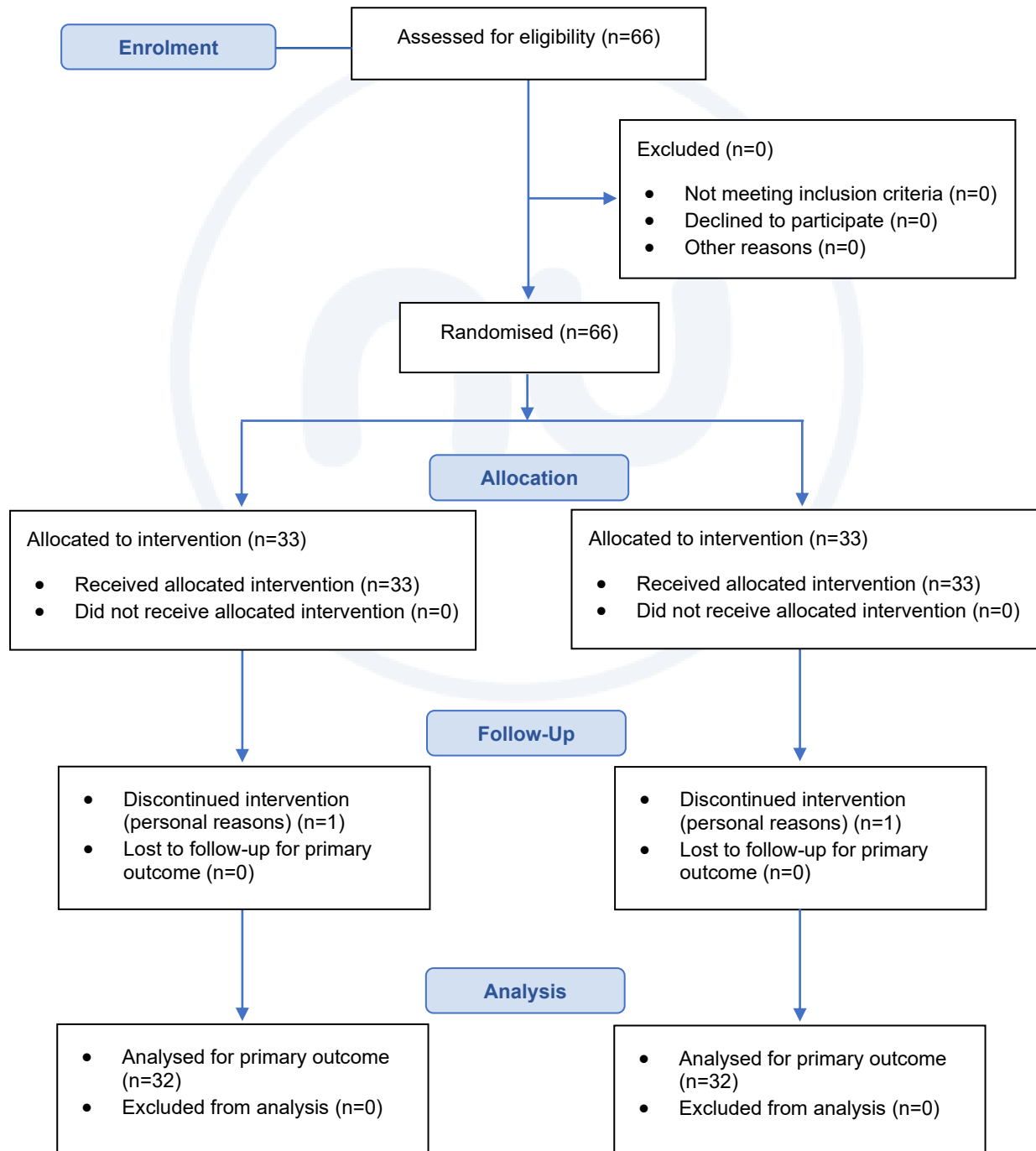


Participant Flow



Baseline Characteristics

Characteristic	NuLush Hair [®] (N=33)	Placebo (N=33)
Age (years), mean (SE)	35.2 (2.3)	37.4 (2.5)
Sex , n (%)		
- Female	14 (42.4%)	19 (57.6%)
- Male	19 (57.6%)	14 (42.4%)
Ethnicity	Caucasian	Caucasian
Health status	Healthy volunteers	Healthy volunteers
Hair condition	Seasonal hair loss	Seasonal hair loss
Nail condition	Brittle nails	Brittle nails
Skin condition	Dry / low elasticity facial skin	Dry / low elasticity facial skin

Baseline Characteristics

Changes in hair, skin and nail parameters after 56 (T56) and 84 (T84) days of supplementation with NuLush Hair[®] compared with placebo.

Endpoint	Timepoint	NuLush Hair [®]	Placebo
Hair loss - Pull test	T56	- 30.7***	- 11.3**
(Δ from baseline, %)	T84	- 44.7***	- 9.5
Hair loss - Wash test	T56	- 7.9**	- 3.3***
(Δ from baseline, %)	T84	- 9.9**	- 2.5
Hair elasticity	T56	+ 1.83	+ 0.79
(Δ from baseline, %)	T84	+ 2.45*	- 1.32
Hair density	T84+48h	38.9**	28.3
(Δ hairs/cm ² from baseline)			
Hair growth (cm), mean (SE)	T84	3.5 (4.8)	3.3 (4.3)
Hair brightness	T56	62.5	25.0
(subjects showing improvement, %)	T84	75.0	28.1
Skin hydration	T56	+ 14.8***	+ 6.7***
(Δ from baseline, %)	T84	+ 19.9***	+ 7.9***
Skin firmness (R0)	T56	- 5.8***	- 1.8*
(Δ from baseline, %)	T84	- 9.0***	- 3.7*
Skin elasticity (R2)	T56	+ 4.0***	+ 2.3***
(Δ from baseline, %)	T84	+ 5.2***	+ 2.7
Skin brightness	T56	62.5	21.9
(subjects showing improvement, %)	T84	81.3	28.1
Nail hardness	T56	71.9	37.5
(subjects showing improvement, %)	T84	87.5	40.6

Statistical significance refers to intra-group comparisons versus baseline (T0): *p < 0.05; **p < 0.01; ***p < 0.001.

A decrease in the R0 parameter indicates improved skin firmness.

Adverse Events

NuLush Hair[®] was well-tolerated, with no significant adverse events (AEs) or serious adverse events (SAEs) reported.

