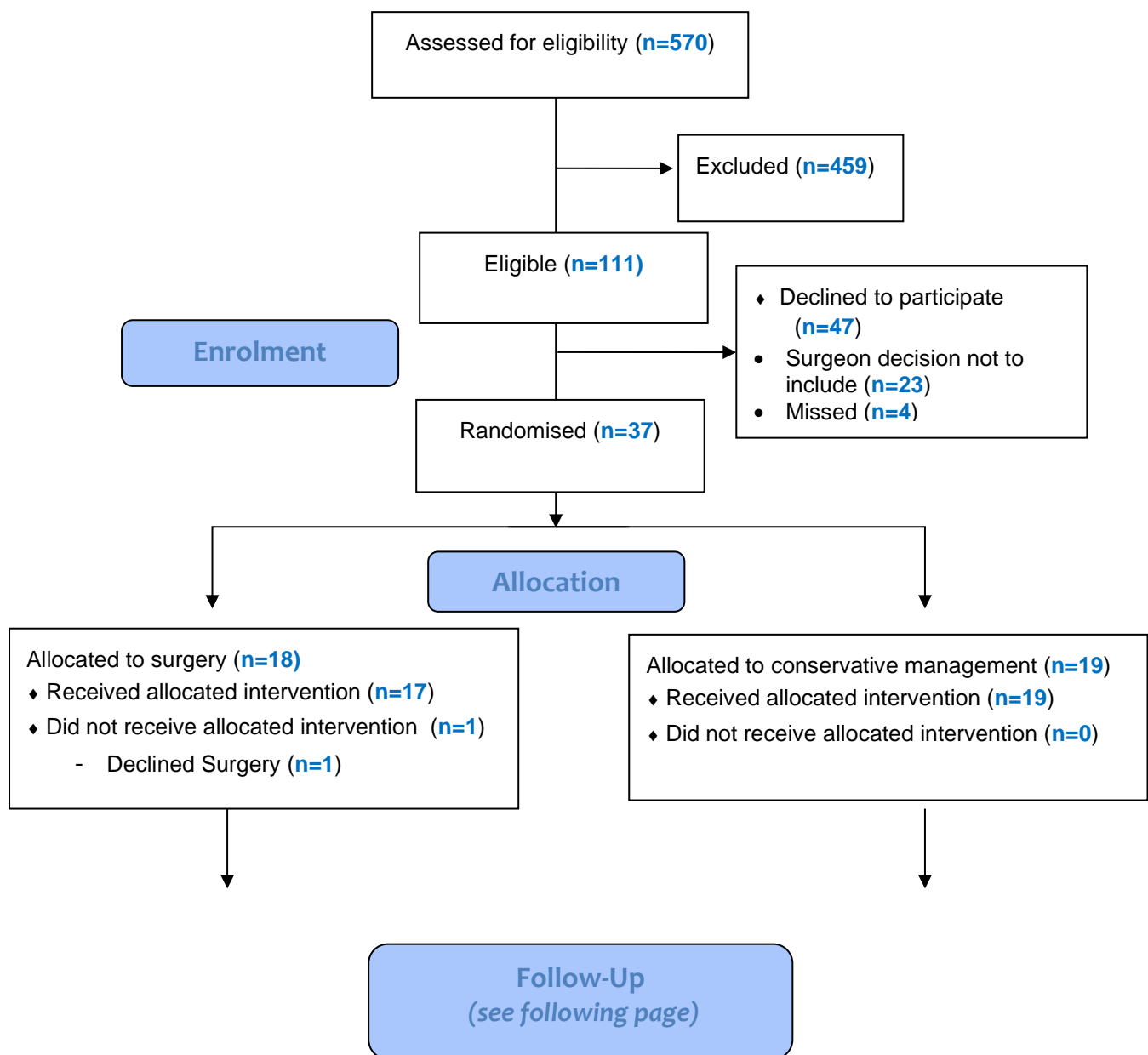
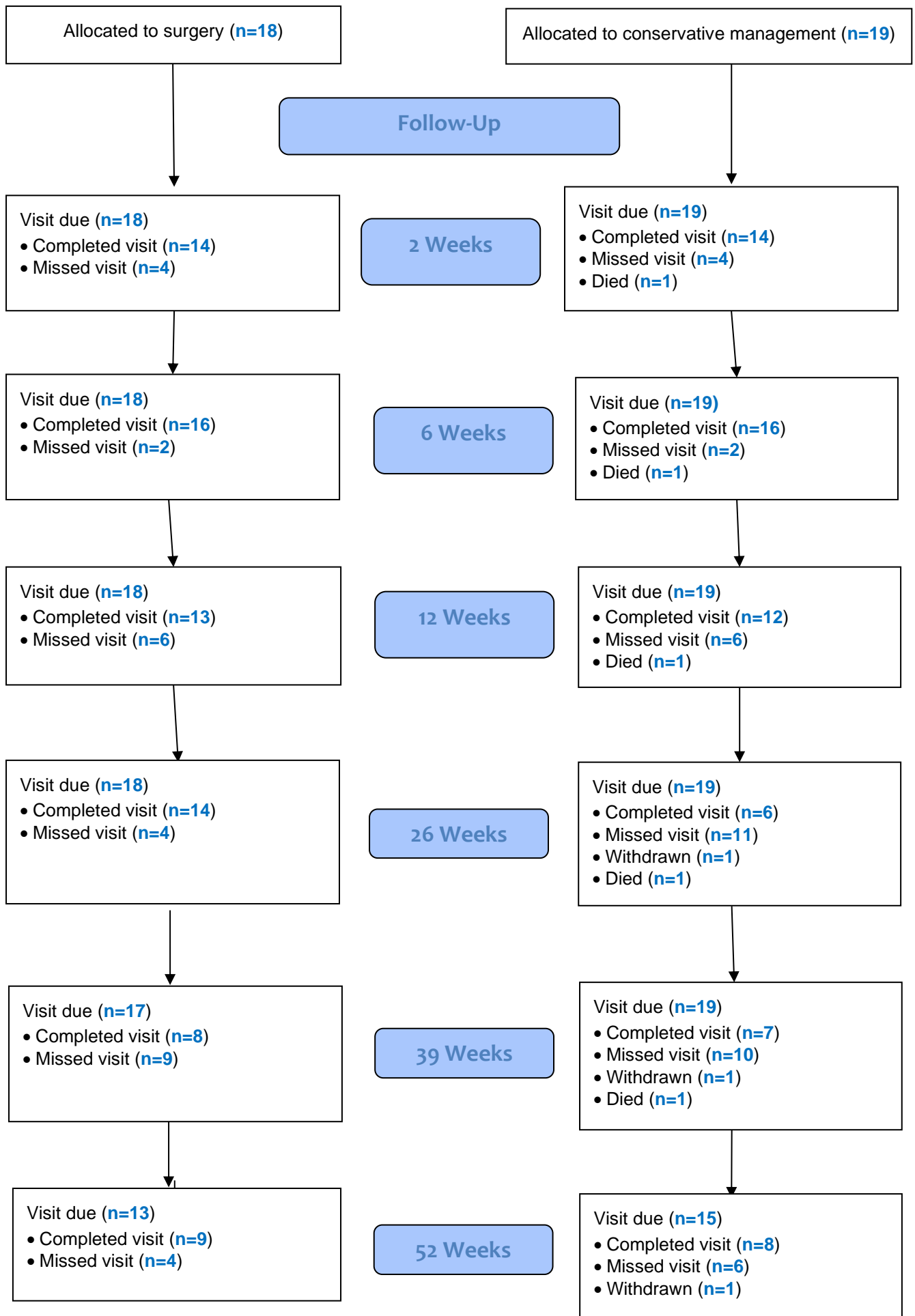


Participant Flow



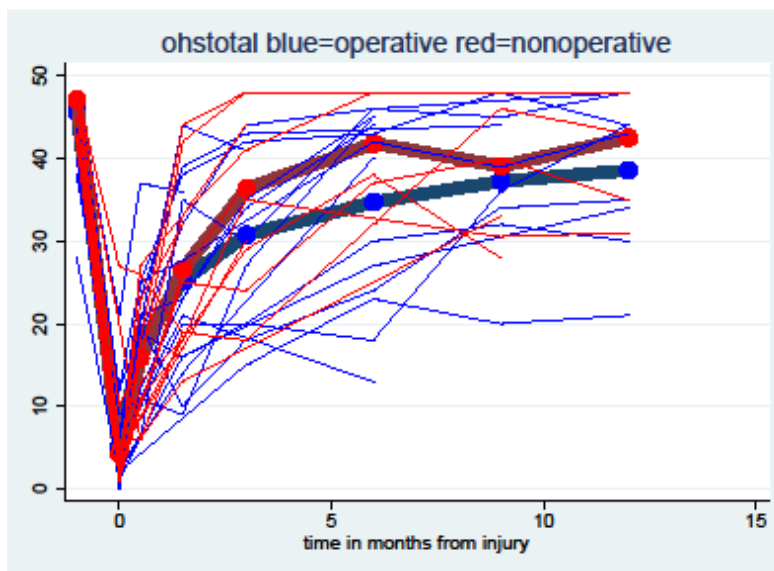


Baseline Characteristics

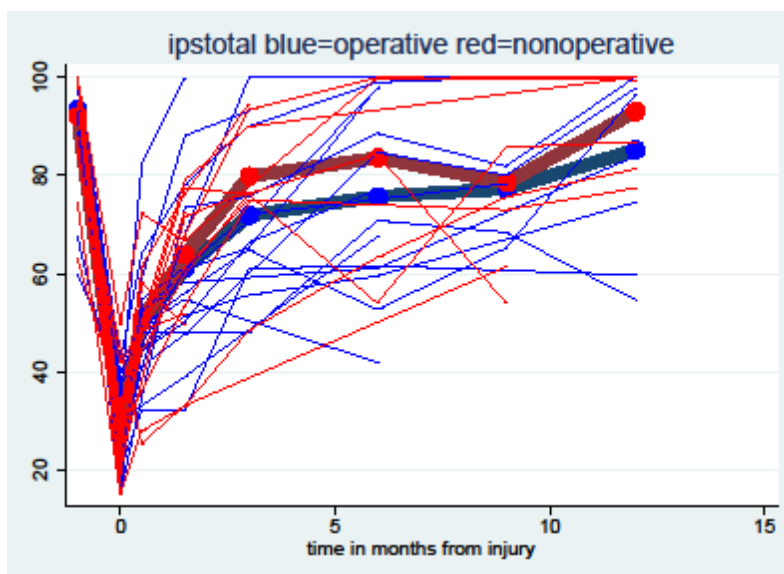
Gender	Operative (n=18)	Non-operative (n=19)	All Patients (n=37)
Male	9 (50%)	7 (37%)	16 (43%)
Female	9 (50%)	12 (63%)	21 (57%)
Age			
Min	17	17	17
Max	64	71	71
Median	39	52	45

Outcome Measures

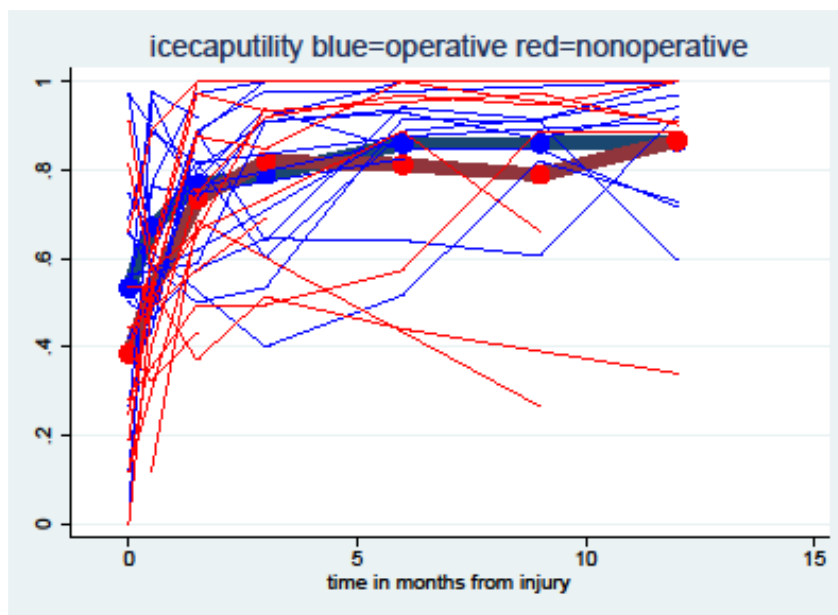
Oxford Hip Score: Higher score for better function



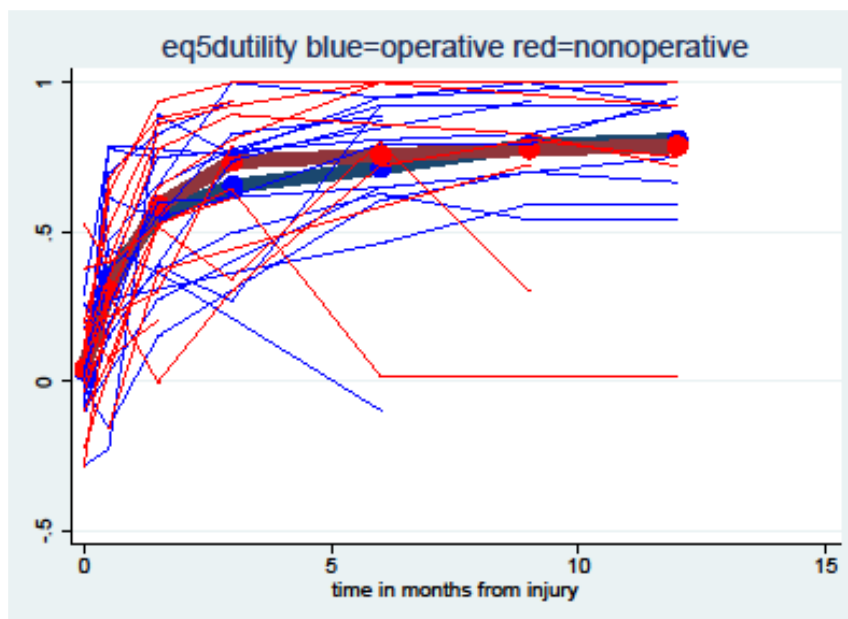
Iowa Pelvic score: Higher score better function



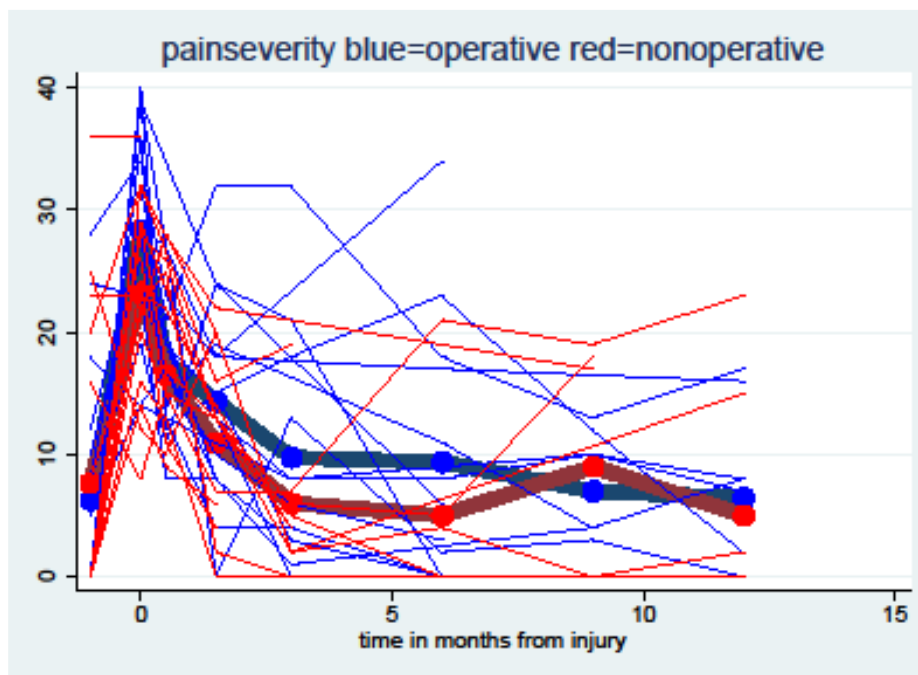
ICE CAP – measure of capability linked to quality of life (1= good, 0=bad)



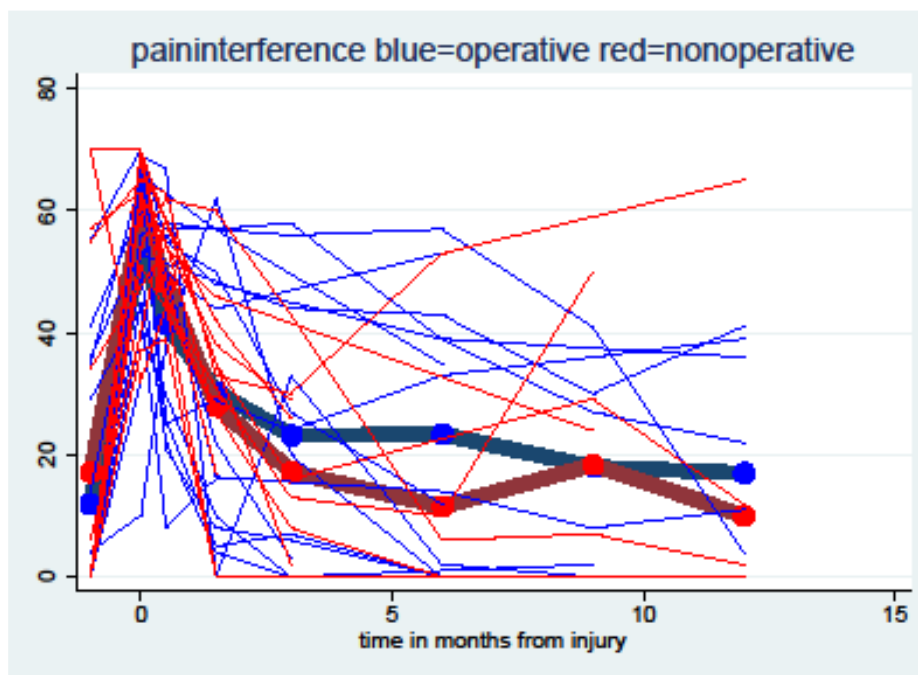
EQ5D – measure of health related quality of life (1=good 0= bad)



Pain severity: Higher score less pain



Pain interference: Higher score more pain



Adverse Events

Study ID	Group	Visit reported	Complication
1075	Operative	2 weeks	Metalwork rubbing & painful
1110	Operative	6 weeks	Numbness in top of leg
3013	Operative	2 weeks	Metalwork impacting on daily function
8001	Operative	6 weeks	Excessive fluid in leg. ?Patella #
1075	Operative	6 months	Stitch abcess
1201	Operative	2 weeks	Neuropathic pain in leg
1400	Operative	3 months	Nerve pain in left thigh & back
1400	Operative	6 months	Bilateral cutaneous nerve dysfunction following removal of INFIX
5012	Operative	6 months	Weakness in left Quads muscle
8003	Operative	3 months	Swelling in Right hip
1148	Non-operative	2 weeks	Shooting pains in leg, difficulty weightbearing
4018	Non-operative	2 weeks	Nerve discomfort in leg
1041	Non-operative	9 months	Shooting pains in leg when standing