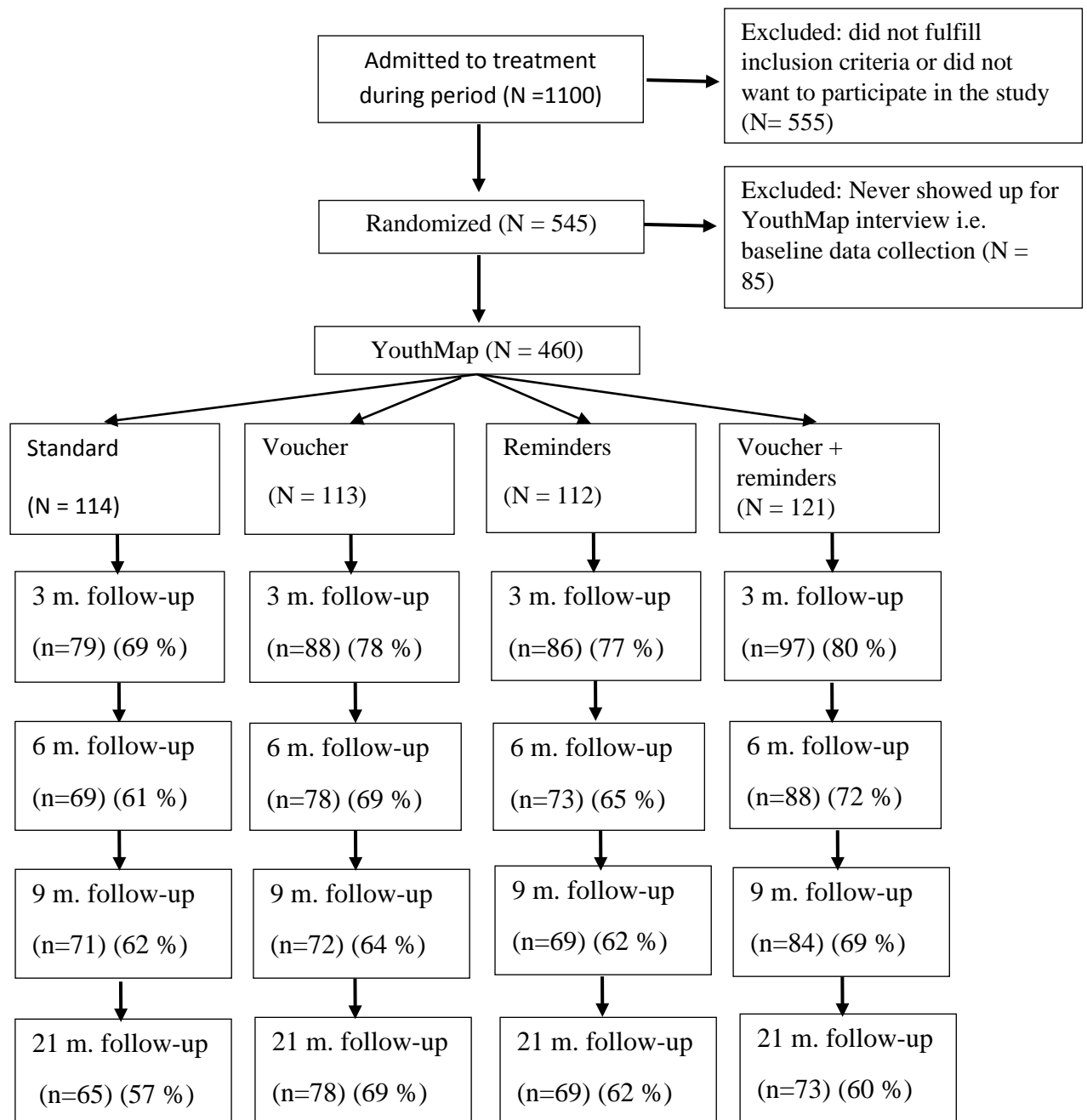


## PARTICIPANT FLOW



A total of 545 participants gave consent and were randomized to one of the four treatment groups. As 85 of these never showed up to the first session in which the YouthMap questionnaire (the study's baseline data) were to be answered, they were excluded from the study.

## BASELINE CHARACTERISTICS

Table 1. Demographics (N=460)

	Group 1	Group 2	Group 3	Group 4
% female	20.2	25.7	20.5	24.8
Age (mean)	20.4	20.6	20.3	20.6
Psychiatric diagnosis (%)*	36.0	31.9	25.9	40.5
Social security benefits (kontanthjælp) (%)	24.6	38.9	27.7	36.4
Drug severity composite score**, mean	14.5	13.9	13.6	14.5

\*Self-reported psychiatric diagnoses

\*\*Drug severity composite score= (((days cannabis/30)+(days amphetamines/30)+(days cocaine/30)+(days ecstasy/30)+(days other drugs/30))/5)\*100)

## OUTCOME MEASURES

Table 1 Primary Outcomes – Use of illicit substances %

	Group 1	Group 2	Group 3	Group 4
intake	99.1	98.2	96.4	97.5
1 <sup>st</sup> session	96.5	95.6	95.5	95.9
3 month follow-up	73.4	78.4	77.9	80.4
6 month follow-up	63.8	73.1	63.0	65.9
9 month follow-up	63.4	69.4	68.1	50.0
21 month follow-up*	52.3	69.2	60.9	53.4

\* At 21 month follow-up a significant number of the participants in group 1 had been re-admitted to treatment.

Table 2 Secondary Outcomes

Outcome variable	Measure
Use of alcohol	Self-reported number of standard alcohol drinks consumed in a typical week (mean)
Use of cigarettes	Smoked cigarettes every day past 30 days (y/n)
Treatment retention	Completed the primary treatment program (%)
Illegal activities	Self-reported past 30 day involvement in illegal activities (y/n) (%)
Psychological wellbeing	Self-reported wellbeing on a scale from 0-10 on 3 (personal, interpersonal, and social) dimensions (total mean)
Use of drugs in social network	Self-reported close friends who use illicit drugs (y/n) (%)
Social support	Self-reported high or very high degree of support from one or both parents
Educational activities	Self-reported current enrollment in an educational program (y/n) (%)
Vocational activities	Self-reported current fulltime employment (%)
Housing conditions	Self-reported living alone or with partner
Income	Self-reported current social security benefits recipient as primary source of income (%)

	Group 1	Group 2	Group 3	Group 4
<b>Use of alcohol</b>				
1 <sup>st</sup> session	10.5	11.0	14.5	9.1
3 m follow-up	16.4	10.9	14.9	9.6
6 m follow-up	10.5	11.1	14.1	10.0
9 m follow-up	10.6	9.7	13.9	10.4
21 m follow-up	9.8	9.7	14.4	8.7
<b>Use of cigarettes</b>				
1 <sup>st</sup> session	82.5	78.8	87.5	81.8
3 m follow-up	79.8	75.0	79.1	74.2
6 m follow-up	81.2	84.6	75.3	77.3
9 m follow-up	76.1	73.6	75.4	73.8
21 m follow-up	80.0	64.1	76.8	74.0
<b>Treatment retention</b>				
Completed primary	25.4	46.0	39.3	48.8
<b>Illegal activities</b>				
1 <sup>st</sup> session	25.4	23.0	18.8	19.8
3 m follow-up	16.7	18.4	19.8	11.3
6 m follow-up	14.7	14.1	12.5	10.3
9 m follow-up	14.1	20.8	14.7	6.0
21 m follow-up	16.9	15.4	15.9	4.1
<b>Psychological wellbeing</b>				
1 <sup>st</sup> session	6.1	5.9	6.3	5.5
3 m follow-up	6.9	6.7	6.9	6.1
6 m follow-up	6.6	7.1	7.1	6.9
9 m follow-up	6.2	6.9	7.1	7.1
21 m follow-up	6.5	7.0	7.2	6.8
<b>Use of drugs in social network</b>				
1 <sup>st</sup> session	77.2	85.0	76.8	76.9
3 m follow-up	73.1	78.2	77.9	74.2
6 m follow-up	76.5	79.5	84.9	72.4
9 m follow-up	62.0	77.8	76.8	66.7
21 m follow-up	61.5	74.4	72.5	68.5
<b>Social support</b>				
1 <sup>st</sup> session	70.2	69.0	68.8	60.3
3 m follow-up	70.5	63.6	58.1	57.7
6 m follow-up	69.1	66.7	63.0	60.9
9 m follow-up	57.8	70.8	68.1	61.9
21 m follow-up	67.7	68.0	69.6	71.2
<b>Educational activities</b>				
1 <sup>st</sup> session	56.1	48.7	58.9	51.2
3 m follow-up	50.6	51.1	51.2	48.5
6 m follow-up	53.6	48.7	54.8	60.2
9 m follow-up	52.1	58.3	53.6	65.5
21 m follow-up	53.9	50.0	42.0	63.0

<b>Vocational activities</b>				
1 <sup>st</sup> session	7.9	10.6	10.7	5.8
3 m follow-up	8.9	14.8	10.5	14.4
6 m follow-up	15.9	15.4	9.6	12.5
9 m follow-up	16.9	18.1	11.6	15.5
21 m follow-up	27.7	24.4	17.4	12.3
<b>Housing conditions</b>				
1 <sup>st</sup> session	42.1	40.7	39.3	49.6
3 m follow-up	43.0	35.2	47.7	49.5
6 m follow-up	46.4	39.7	48.0	43.2
9 m follow-up	50.7	47.2	47.8	41.7
21 m follow-up	50.8	52.6	44.9	56.2
<b>Income</b>				
1 <sup>st</sup> session	24.6	38.9	27.7	36.4
3 m follow-up	29.1	37.5	30.2	41.2
6 m follow-up	18.8	35.9	31.5	44.3
9 m follow-up	21.1	29.2	30.4	33.3
21 m follow-up	10.8	16.7	29.0	28.8

## ADVERSE EVENTS

There were no adverse events associated with the trial.