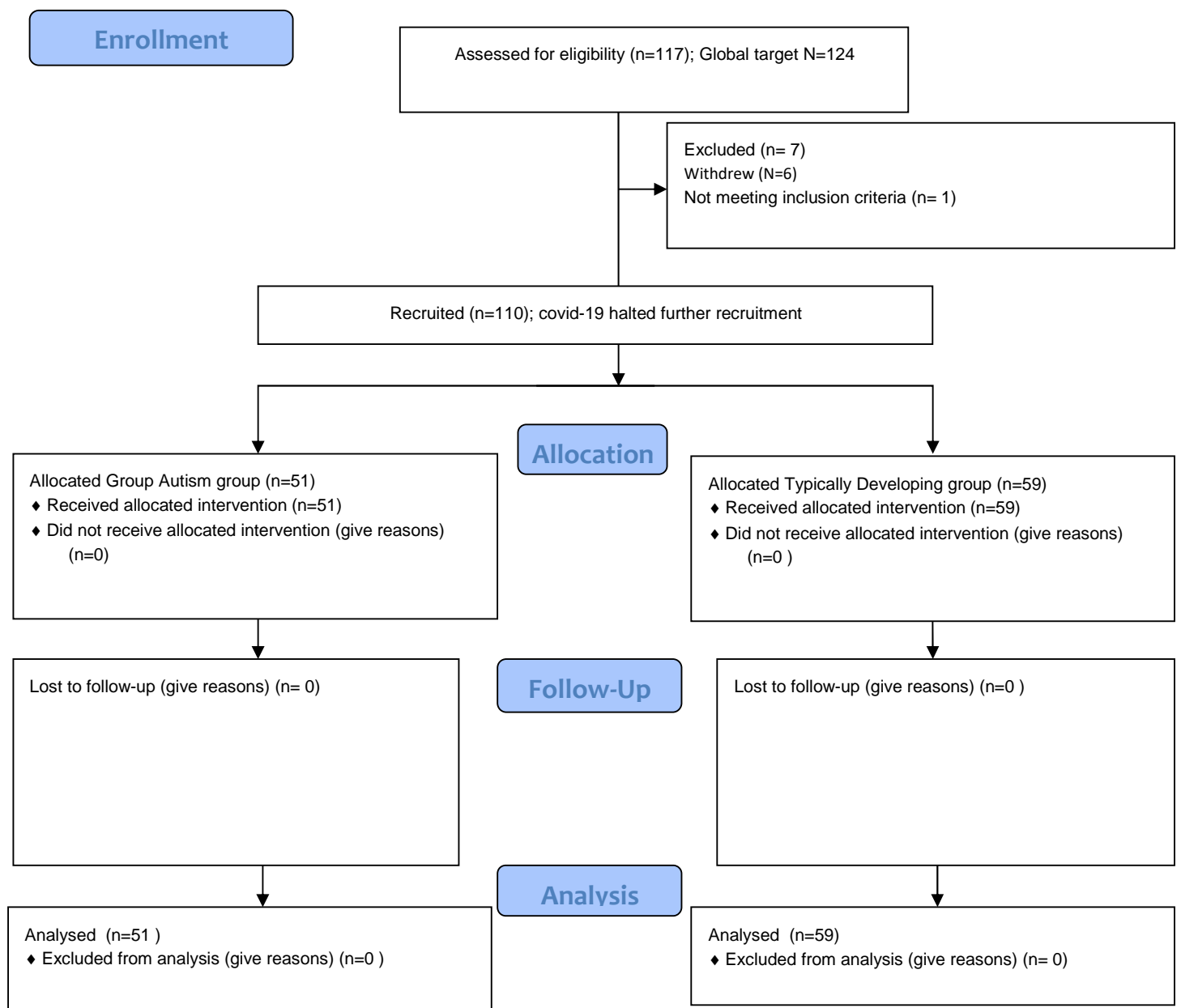


Can the Pirates game be used to help assess children with possible autism?

Participant Flow:

Figure 2 CONSORT Flow Diagram of Enrolment to Analysis



Baseline Characteristics: A tabular summary showing baseline demographic (age and gender) and clinical characteristics of the participants.

Baseline Characteristics	Number in sample (%)	Neurotypical participants (% of group)	Clinical participants (Autism) (% of group)
Boys (Aged 5 -12 Years)	68 (62%)	28 (47%)	40 (78%)
Girls (Aged 5 -12 Years)	42 (38%)	31 (53%)	11 (21%)
Total sample	110 (100%)	59(53%)	51(46%)

Outcome Measures: A tabular summary of the outcome measures listed in the ISRCTN record. Please ensure to list your primary outcome measures in a tabular format and provide your secondary outcome measures in a separate table if available.

Participant group	Mean score on software*
All Clinical participants (Autism) (% of group)	35**
Neurotypical participants (% of group)	31**
Clinical participants 4-7 years	37**
Neurotypical participants 4-7 years	32**
Clinical participants 8-12 years	34**
Neurotypical participants 8-12 years	31**

*Cutoff score for children aged 4-7 was 34 (where 6 errors were made in answering questions), whereas cut off for ages 8–12 was set at 33 (5 errors)

** Significant difference below $p = 0.0001$ between both groups

Using these cut off scores, sensitivity was over 70% and specificity 80%+ for the software in detection of Autism.

Adverse Events: There were no adverse events associated with this trial.