

There were no adverse events associated with this study

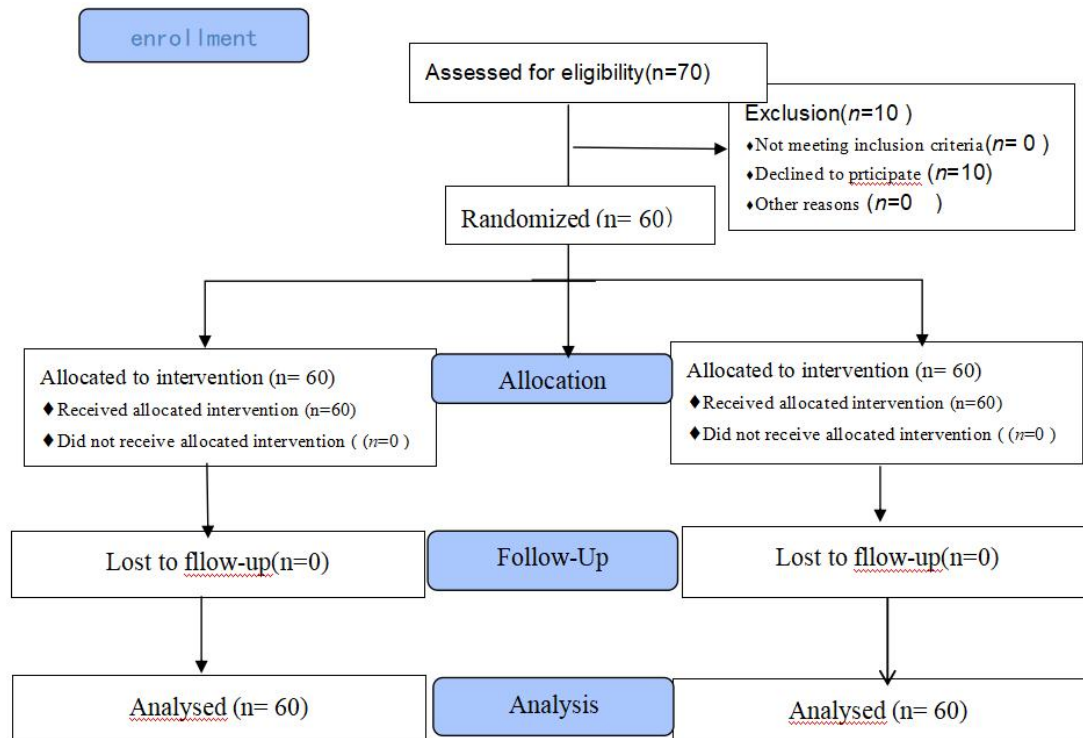


Table1 descriptive statistics of the sample

Corvariates	Hbc side	Control side	P value
Age	25.81 ± 4.91years		-
Sex.no(%)			
Male	23(38)		-
Female	38(62)		-
Operation time	19.20 ± 1.74 minutes	19.50 ± 1.36 minutes	0.30‡

The results were expressed as mean ± standard deviation ;

† means paired test, and the data conforms to normal distribution ;

‡ represents Wilcoxon signed rank sum test, and the data are non-normally distributed ;

Table 2. Comparison of postoperative pain, swelling, and mouth opening (mm) between the hbc side and the control side.

	Hbc side	Control side	<i>P</i> value
Variables			
pain			
Day1	37.58±4.39	47.00±4.33	< 0.001† *
Day3	21.88±3.25	35.95±1.57	<0.001† *
Day7	0±0.00	0±0.00	-
swelling			
Day1	9.20±1.13	9.01±1.11	0.04‡
Day3	6.86±0.70	7.15±0.80	0.01‡ *
Day7	1.02±0.47	1.10±0.43	0.22‡
MIO			
Day1	23.92±1.38	18.22±1.82	<0.001‡ *
Day3	30.00±1.61	23.78±1.70	<0.001‡ *
Day7	38.72±2.07	38.37±1.84	0.66‡

The results were expressed as mean ± standard deviation ;

† means paired test, and the data conforms to normal distribution ;

‡ represents Wilcoxon signed rank sum test, and the data are non-normally distributed ;

* represents a statistically significant *P* value after Bonferroni correction, *P* = 0.017.

Table 3. Comparison of quality of life scale between hbc side and the control side.

	follow-up date	Hbc side	Control side	<i>P</i> value
Scale item				
Social isolation	Day3	2.82±0.62	3.67±0.77	<0.001‡*
	Day7	0.47±0.50	0.60±0.49	0.12‡
Sleep	Day3	1.37±0.66	2.60±0.69	<0.001‡*
	Day7	0.18±0.39	0.28±0.45	0.20‡
Diet	Day3	6.62±0.80	9.20±1.52	<0.001‡*
	Day7	2.98±0.68	2.98±0.74	0.976‡
Appearance	Day3	1.13±0.60	1.52±0.68	0.001‡*
	Day7	0.15±0.36	0.22±0.42	0.29‡
Speech	Day3	1.77±0.62	1.62±0.64	0.23‡

	Day7	0.32±0.47	0.30±0.46	0.84‡
Total	Day3	13.70±1.65	18.60±2.14	<0.001‡*
	Day7	4.10±1.15	4.38±1.24	0.16‡

The results were expressed as mean ± standard deviation ;

† means paired test, and the data conforms to normal distribution ;

‡ represents Wilcoxon signed rank sum test, and the data are non-normally distributed ;

* represents a statistically significant P value after Bonferroni correction, $P = 0.004$

Table 4. Comparison of wound healing scores between hbc side and the control side.

	Hbc side	Control side	<i>P</i> value
Wound healing			
Day3	2.50 ± 0.50	1.92 ± 0.50	<0.001 ‡*
Day7	4.15 ± 0.66	3.93 ± 0.55	0.04‡

The results were expressed as mean ± standard deviation ;

† means paired test, and the data conforms to normal distribution ;

‡ represents Wilcoxon signed rank sum test, and the data are non-normally distributed ;

* represents a statistically significant P value after Bonferroni correction, $P = 0.025$