

Figure 2: CONSORT 2010 Flow Diagram

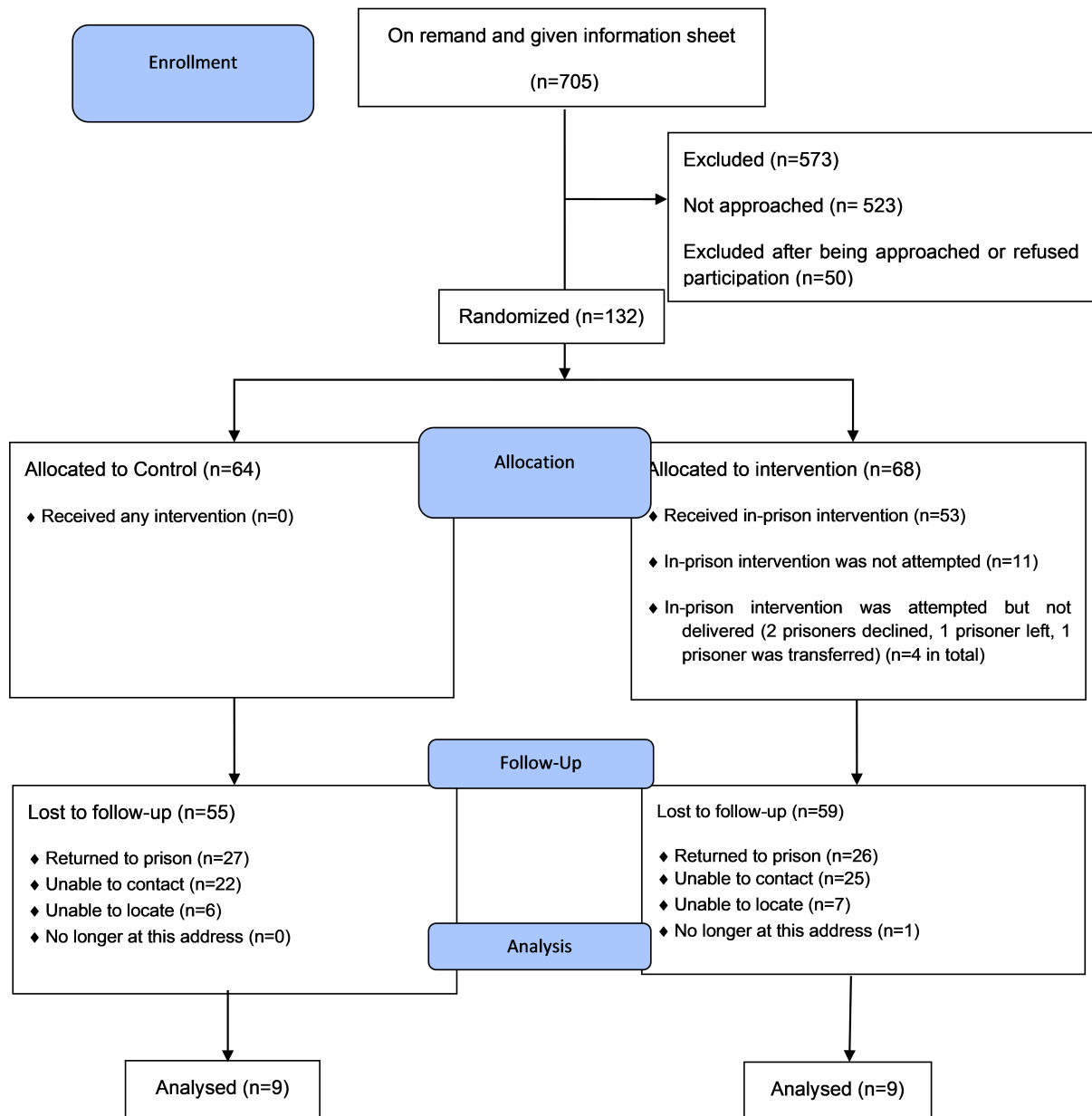


Table 15: Frequency table of the categorical baseline characteristics of the randomised participants, stratified by site and randomised group

		<i>Randomisation Allocation</i>				<i>Overall</i>	
		<i>Intervention</i>		<i>Control</i>			
		<i>n</i>		<i>n</i>			
		<i>N</i>	<i>%</i>	<i>N</i>	<i>%</i>	<i>N</i>	<i>%</i>
Site							
England	Total number of prisoners	46	67.6	44	68.8	90	68.2
	Ethnicity						
	White Scottish	0	0.0	0	0.0	0	0.0
	White British	45	66.2	38	59.4	83	62.9
	White Irish	0	0.0	2	3.1	2	1.5
	White Other	0	0.0	1	1.6	1	0.8
	Asian British	0	0.0	1	1.6	1	0.8
	Mixed Race	1	1.5	1	1.6	2	1.5
	Other	0	0.0	1	1.6	1	0.8
	Relationship Status						
	Single	31	45.6	33	51.6	64	48.5
	In a relationship (same sex or opposite)	14	20.6	8	12.5	22	16.7
	Married / Civil Partnership	1	1.5	2	3.1	3	2.3
	Divorced	0	0.0	1	1.6	1	0.8
	Highest Educational Achievement						
	University degree	1	1.5	0	0.0	1	0.8
	College degree	0	0.0	0	0.0	0	0.0
	A level / Highers / Advanced Highers	1	1.5	0	0.0	1	0.8
	GCSEs / Standard Grades / National Certificate	14	20.6	18	28.1	32	24.2
	Recognised Trade Apprenticeship	10	14.7	8	12.5	18	13.6
	No formal qualifications	20	29.4	18	28.1	38	28.8
Scotland	Total number of prisoners	22	32.4	20	31.3	42	31.8
	Ethnicity	17	25.0	16	25.0	33	25.0

	<i>Randomisation Allocation</i>				<i>Overall</i>	
	<i>Intervention</i>		<i>Control</i>			
	<i>N</i>	<i>%</i>	<i>N</i>	<i>%</i>	<i>N</i>	<i>%</i>
<i>White Scottish</i>						
<i>White British</i>	2	2.9	4	6.3	6	4.5
<i>White Irish</i>	0	0.0	0	0.0	0	0.0
<i>White Other</i>	1	1.5	0	0.0	1	0.8
<i>Asian British</i>	0	0.0	0	0.0	0	0.0
<i>Mixed Race</i>	0	0.0	0	0.0	0	0.0
<i>Other</i>	2	2.9	0	0.0	2	1.5
<i>Relationship Status</i>						
<i>Single</i>	13	19.1	10	15.6	23	17.4
<i>In a relationship (same sex or opposite)</i>	8	11.8	8	12.5	16	12.1
<i>Married / Civil Partnership</i>	1	1.5	2	3.1	3	2.3
<i>Divorced</i>	0	0.0	0	0.0	0	0.0
<i>Highest Educational Achievement</i>						
<i>University degree</i>	2	2.9	1	1.6	3	2.3
<i>College degree</i>	2	2.9	2	3.1	4	3.0
<i>A level / Highers / Advanced Highers</i>	0	0.0	0	0.0	0	0.0
<i>GCSEs / Standard Grades / National Certificate</i>	10	14.7	9	14.1	19	14.4
<i>Recognised Trade Apprenticeship</i>	3	4.4	4	6.3	7	5.3
<i>No formal qualifications</i>	5	7.4	4	6.3	9	6.8
<i>Both sites</i>	<i>Total number of prisoners</i>	68	100.0	64	100.0	132
	<i>Ethnicity</i>					
<i>White Scottish</i>	17	25.0	16	25.0	33	25.0
<i>White British</i>	47	69.1	42	65.6	89	67.4
<i>White Irish</i>	0	0.0	2	3.1	2	1.5
<i>White Other</i>	1	1.5	1	1.6	2	1.5

	<i>Randomisation Allocation</i>				<i>Overall</i>	
	<i>Intervention</i>		<i>Control</i>			
	<i>N</i>	<i>%</i>	<i>N</i>	<i>%</i>	<i>N</i>	<i>%</i>
<i>Asian British</i>	0	0.0	1	1.6	1	0.8
<i>Mixed Race</i>	1	1.5	1	1.6	2	1.5
<i>Other</i>	2	2.9	1	1.6	3	2.3
<i>Relationship Status</i>						
<i>Single</i>	44	64.7	43	67.2	87	65.9
<i>In a relationship (same sex or opposite)</i>	22	32.4	16	25.0	38	28.8
<i>Married / Civil Partnership</i>	2	2.9	4	6.3	6	4.5
<i>Divorced</i>	0	0.0	1	1.6	1	0.8
<i>Highest Educational Achievement</i>						
<i>University degree</i>	3	4.4	1	1.6	4	3.0
<i>College degree</i>	2	2.9	2	3.1	4	3.0
<i>A level / Highers / Advanced Highers</i>	1	1.5	0	0.0	1	0.8
<i>GCSEs / Standard Grades / National Certificate</i>	24	35.3	27	42.2	51	38.6
<i>Recognised Trade Apprenticeship</i>	13	19.1	12	18.8	25	18.9
<i>No formal qualifications</i>	25	36.8	22	34.4	47	35.6

Table 25: Descriptive statistics for primary outcome: alcohol consumption in previous 28 days according to the AUDIT-C, split by site and randomised group

			<i>N</i>	<i>Mean</i>	<i>SD</i>	<i>Median</i>	<i>Min</i>	<i>Max</i>
<i>Both sites</i>	<i>Baseline</i>	<i>Randomisation Allocation</i>						
		<i>Intervention</i>	9	95.2	83.8	80.0	10.5	198.0
		<i>Control</i>	9	107.8	70.3	110.0	11.0	198.0
		<i>Overall</i>	18	101.5	75.3	104.5	10.5	198.0
	<i>6 months follow-up</i>	<i>Randomisation Allocation</i>						
		<i>Intervention</i>	2	10.8	0.4	10.8	10.5	11.0
		<i>Control</i>	1	11.0	.	11.0	11.0	11.0
		<i>Overall</i>	3	10.8	0.3	11.0	10.5	11.0
	<i>12 months follow-up</i>	<i>Randomisation Allocation</i>						
		<i>Intervention</i>	9	106.1	159.8	16.5	0.0	448.0
		<i>Control</i>	9	41.4	58.2	8.0	0.0	154.0
		<i>Overall</i>	18	73.8	121.3	14.5	0.0	448.0
<i>Site</i>	<i>England</i>	<i>Randomisation Allocation</i>						
		<i>Intervention</i>	2	60.3	70.4	60.3	10.5	110.0
		<i>Control</i>	2	121.5	31.8	121.5	99.0	144.0
		<i>Overall</i>	4	90.9	56.9	104.5	10.5	144.0
	<i>12 months follow-up</i>	<i>Randomisation Allocation</i>						
		<i>Intervention</i>	2	13.5	4.2	13.5	10.5	16.5
		<i>Control</i>	2	117.0	52.3	117.0	80.0	154.0
		<i>Overall</i>	4	65.3	67.0	48.3	10.5	154.0
	<i>Scotland</i>	<i>Randomisation Allocation</i>						
		<i>Intervention</i>	7	105.2	89.6	80.0	11.0	198.0
		<i>Control</i>	7	103.9	79.6	110.0	11.0	198.0
		<i>Overall</i>	14	104.5	81.4	95.0	11.0	198.0

		<i>N</i>	<i>Mean</i>	<i>SD</i>	<i>Median</i>	<i>Min</i>	<i>Max</i>
<i>6 months follow-up</i>	<i>Randomisation Allocation</i>						
	<i>Intervention</i>	2	10.8	0.4	10.8	10.5	11.0
	<i>Control</i>	1	11.0	.	11.0	11.0	11.0
	<i>Overall</i>	3	10.8	0.3	11.0	10.5	11.0
<i>12 months follow-up</i>	<i>Randomisation Allocation</i>						
	<i>Intervention</i>	7	132.6	174.3	24.0	0.0	448.0
	<i>Control</i>	7	19.8	40.2	4.5	0.0	110.0
	<i>Overall</i>	14	76.2	134.9	12.0	0.0	448.0

APPRAISE ISRCTN 27417180

There were no adverse events associated with this study.