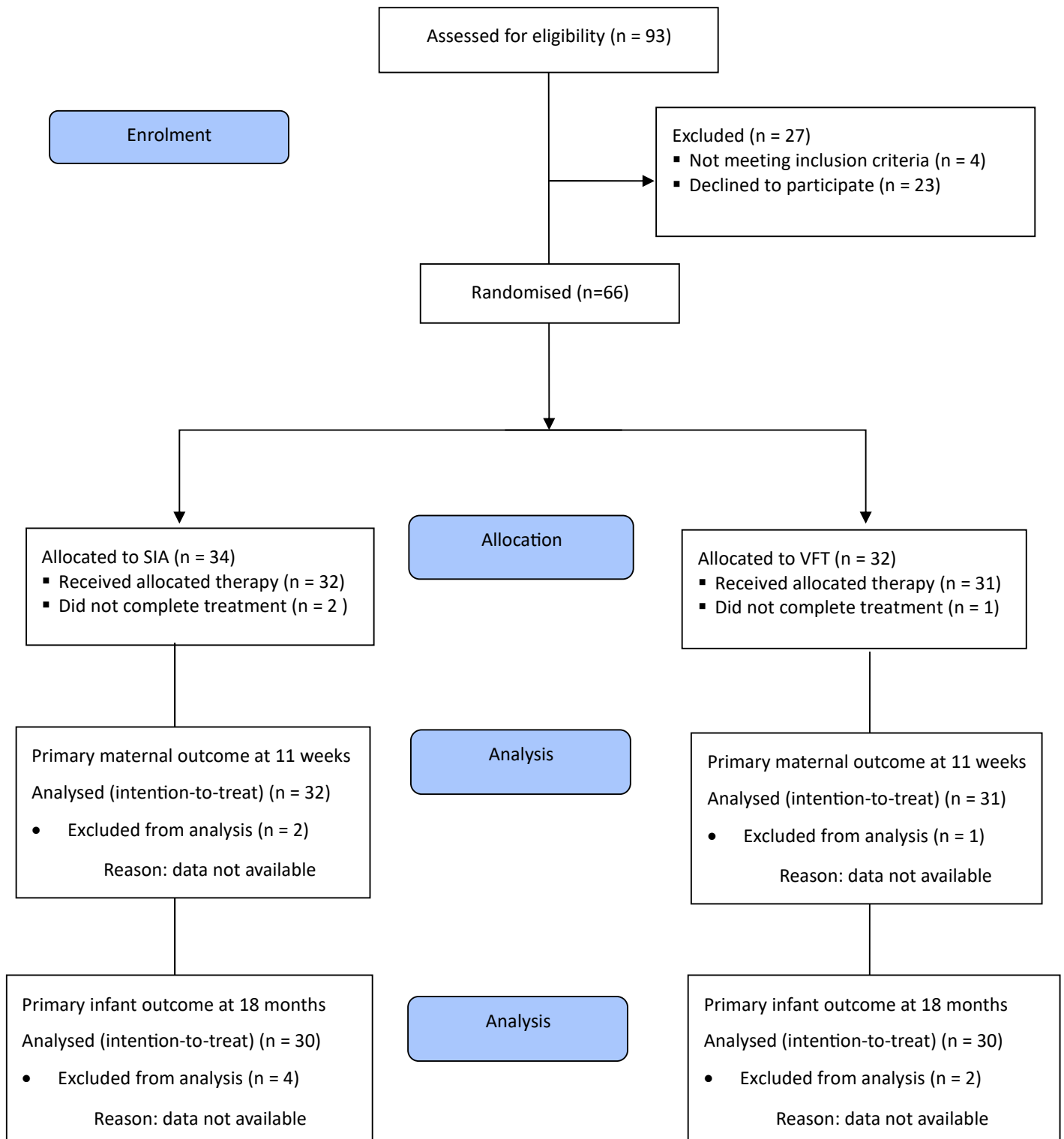


Participant Flow



Baseline Characteristics

	SIA (N = 34)	VFT (N = 32)	Total (N = 66)
Ethnicity; n (%)			
White - British	28 (82)	26 (81)	54 (82)
White - Other	4 (12)	5 (16)	9 (14)
Black or Black British - African	1 (3)	0 (0)	1 (2)
Asian or Asian British - Indian	1 (3)	1 (3)	2 (3)
Mother's age in years; mean (SD)	33.3 (4.7)	31.1 (6.1)	32.2 (5.5)
Baby's age in weeks; mean (SD)	3.1 (1.5)	2.8 (1.1)	2.9 (1.3)
Birthweight in grams; mean (SD)	3553 (475)	3457 (474)	3506 (473)
Gestation in weeks; mean (SD)	39.8 (1.3)	39.6 (1.4)	39.7 (1.4)
HADS score; mean (SD)	8.3 (4.3)	9.5 (6.7)	8.9 (5.6)
PAC-Q score; mean (SD)			
Child self confidence*	176 (101)	145 (98)	161 (100)
Self-blame*	167 (126)	113 (120)	140 (125)
Growth through challenge**	472 (189)	439 (210)	456 (199)
Perceived manageability**	459 (39)	461 (58)	460 (49)
Impact of treatment*	219 (84)	204 (94)	212 (89)
PDS ; mean (SD)	8.9 (8.0)	7.9 (11.1)	8.4 (9.6)

Hospital Anxiety and Depression Scale (HADS)
 Parental Appraisal of Cleft Questionnaire (PAC-Q)
 Post-traumatic Stress Diagnostic Scale (PDS)

Primary outcome measures

1. **Maternal sensitivity** in face to face interaction with the infant immediately following treatment (when infant aged 11 weeks and prior to lip cleft repair), measured using the Global Rating Scale dimension of sensitivity.

<i>Variable</i>	<i>Mean</i> <i>SIA (n = 32)</i>	<i>Mean</i> <i>VFT (n = 31)</i>	<i>Difference (95% CI)</i>	<i>p-value</i> [^]
<i>Treatment</i>	<i>Unadjusted analysis</i>			

	VFT vs SIA	3.38 (3.07 to 3.68)	3.39 (3.08 to 3.70)	0.01 (-0.42 to 0.44)	0.956
Treatment		Adjusted analysis*			
	VFT vs SIA	3.36 (3.06 to 3.67)	3.39 (3.09 to 3.70)	0.03 (-0.41 to 0.46)	0.905

*Adjusted for baby gender, cleft type, mother education, antenatal diagnosis, first biological child, and recruitment centre

^Two sided p-value <0.05 considered to be significant

2. **Infant cognitive development** at 18 months (assessed by Bayley Scales of Infant and Toddler Development, 3rd edition)

Variable		Mean SIA (n = 30)	Mean VFT (n = 30)	Difference (95% CI)	p-value^
Treatment		Unadjusted analysis			
	VFT vs SIA	104.50 (100.90 to 108.1)	105.17 (101.56 to 108.77)	0.67 (-4.43 to 5.76)	0.794
Treatment		Adjusted analysis*			
	VFT vs SIA	104.59 (100.91 to 108.28)	105.07 (101.38 to 108.76)	0.48 (-4.77 to 5.72)	0.855

*Adjusted for baby gender, cleft type, mother education, antenatal diagnosis, first biological child, and recruitment centre

^Two sided p-value <0.05 considered to be significant

Secondary outcome measures

1. **Maternal gaze**, measured by eye tracking at 11 weeks

		Mean SIA (n = 22)	Mean VFT (n = 22)	Difference (95% CI)	p-value^
Treatment				Unadjusted analysis	
	VFT vs SIA	96.90 (93.97 to 99.84)	93.44 (90.52 to 96.38)	-3.46 (-7.60 to 0.69)	0.10
Treatment				Adjusted analysis*	
	VFT vs SIA	96.65 (93.73 to 99.57)	93.70 (90.78 to 96.63)	-2.94 (-7.14 to 1.25)	0.163
	Wilcoxon rank-sum (Mann-Whitney) test			Z=0.294	0.769

**Adjusted for baby gender, cleft type, mother education, antenatal diagnosis, first biological child, and recruitment centre*

^Two sided p-value <0.05 considered to be significant

2. Maternal imitation at 11 weeks

Variable		Mean SIA (n = 32)	Mean VFT (n = 31)	Difference (95% CI)	p-value [^]
Treatment				Unadjusted analysis	
	VFT vs SIA	19.35 (14.02 to 24.67)	14.29 (8.88 to 19.70)	-5.06 (-12.65 to 2.53)	0.188
Treatment				Adjusted analysis*	
	VFT vs SIA	18.88 (13.45 to 24.31)	14.77 (9.26 to 20.29)	-4.11 (-11.91 to 3.70)	0.296
Wilcoxon rank-sum (Mann-Whitney) test				Z=1.639	0.101

**Adjusted for baby gender, cleft type, mother education, antenatal diagnosis, first biological child, and recruitment centre*

^Two sided p-value <0.05 considered to be significant

3. **Infant attention** (assessed by the Focused Attention Task) at 9 & 18 months. This was split in to two variables; the length of the longest period of attention (attention to toys) and the average length time of attention periods.

Analysis of attention to toys as an outcome variable

Time point	Variable		Mean SIA (n = 30)	Mean VFT (n = 31)	Difference (95% CI)	p-value [^]
9 months	Treatment				Unadjusted analysis	
		VFT vs SIA	77.23 (72.45 to 82.02)	76.48 (71.77 to 81.18)	-0.76 (-7.47 to 5.96)	0.822
	Treatment				Adjusted analysis*	
		VFT vs SIA	77.30 (72.27 to 82.34)	76.41 (71.46 to 81.36)	-0.90 (-8.68 to 5.54)	0.802
18 months	Treatment				Unadjusted analysis	
		VFT vs SIA	73.21 (67.95 to 78.48)	75.70 (70.52 to 80.88)	2.49 (-4.90 to 9.88)	0.502
	Treatment				Adjusted analysis*	

		VFT vs SIA	73.55 (68.08 to 79.02)	75.38 (70.0 to 80.76)	1.83 (-5.88 to 9.55)	0.635
--	--	------------	------------------------	-----------------------	----------------------	-------

**Adjusted for baby gender, cleft type, mother education, antenatal diagnosis, first biological child, and recruitment centre*

^Two sided p-value <0.05 considered to be significant

Analysis of mean play duration (i.e. the average length time of attention periods) as an outcome variable

Time Point	Variable		Mean SIA (n = 30)	Mean VFT (n = 31)	Difference (95% CI)	p-value [^]
9 months	Treatment				Unadjusted analysis	
		VFT vs SIA	4.85 (4.12 to 5.58)	4.37 (3.65 to 5.09)	-0.48 (-1.51 to 0.54)	0.350
	Treatment				Adjusted analysis*	
		VFT vs SIA	4.87 (4.11 to 5.63)	4.35 (3.60 to 5.10)	-0.52 (-1.59 to 0.55)	0.335
18 months	Treatment				Unadjusted analysis	
		VFT vs SIA	7.30 (5.57 to 9.03)	7.74 (6.03 to 9.44)	0.44 (-1.99 to 2.87)	0.721
	Treatment				Adjusted analysis*	
		VFT vs SIA	7.45 (5.69 to 9.21)	7.59 (5.86 to 9.31)	0.14 (-2.34 to 2.62)	0.910

**Adjusted for baby gender, cleft type, mother education, antenatal diagnosis, first biological child, and recruitment centre*

^Two sided p-value <0.05 considered to be significant

4. Infant emotion regulation (assessed by the LAB-TAB) at 9 & 18 months. This was split into two variables (distress and latency to distress). The distress variable was categorical (no distress, late distress, early distress. While the latency to distress was a time in seconds.

Analysis of latency category (distress) as an outcome variable

Time point	Variable		Odds Ratio (95% CI)	p-value [^]
9 months	Treatment		Unadjusted analysis	
		VFT vs SIA	1.74 (0.66 to 4.54)	0.261
	Treatment		Adjusted analysis*	
		VFT vs SIA	1.60 (0.59 to 4.30)	0.355

18 months	Treatment		Unadjusted analysis	
		VFT vs SIA	1.0 (0.26 to 3.87)	0.99
	Treatment		Adjusted analysis*	
		VFT vs SIA	0.97 (0.23 to 4.01)	0.962

*Adjusted for baby gender, cleft type, mother education, antenatal diagnosis, first biological child, and recruitment centre

^Two sided p-value <0.05 considered to be significant

Analysis of latency to distress (in seconds) as an outcome variable

Time point	Variable		Geometric Mean SIA (n = 12)	Geometric Mean VFT (n = 19)	Geometric Mean Ratio (95% CI)	p-value^
9 months	Treatment				Unadjusted analysis	
		VFT vs SIA	16.93 (8.71 to 32.89)	17.81 (10.50 to 30.19)	1.05 (0.45 to 2.46)	0.904
	Treatment				Adjusted analysis*	
		VFT vs SIA	15.21 (7.63 to 30.33)	19.05 (11.06 to 32.82)	1.25 (0.51 to 3.06)	0.607
Time point	Variable		Geometric Mean SIA (n = 27)	Geometric Mean VFT (n = 27)	Geometric Mean Ratio (95% CI)	p-value^
18 months	Treatment				Unadjusted analysis	
		VFT vs SIA	6.26 (3.88 to 10.08)	3.44 (2.10 to 5.65)	0.49 (0.25 to 0.97)	0.040
	Treatment				Adjusted analysis*	
		VFT vs SIA	6.72 (4.09 to 11.04)	3.19 (1.90 to 5.34)	0.44 (0.22 to 0.89)	0.024

*Adjusted for baby gender, cleft type, mother education, antenatal diagnosis, first biological child, and recruitment centre

^Two sided p-value <0.05 considered to be significant

5. Maternal appraisal, mood and trauma symptoms immediately after treatment and at 9 & 18 months, assessed by means of self-report questionnaires [Hospital Anxiety & Depression Scale (HADS), Post-traumatic Stress Diagnostic Scale (PDS)] and Parental Appraisal of Cleft Questionnaire (PAC-Q).

Analysis of HADS and PDS as an outcome variables at 11 weeks, 9 and 18 months

Time point	Variable		Mean SIA (n = 32)	Mean VFT (n = 31)	Difference (95% CI)	p-value[^]
11 weeks	Treatment		HADS			
		VFT vs SIA[¥]	8.15 (6.64 to 9.66)	8.04 (6.48 to 9.60)	-0.11 (-2.30 to 2.07)	0.917
		VFT vs SIA[*]	8.11 (6.56 to 9.66)	8.08 (6.48 to 9.68)	-0.03 (-2.30 to 2.23)	0.976
	Treatment		PDS			
		VFT vs SIA[¥]	5.30 (3.42 to 7.18)	4.48 (2.54 to 6.43)	-0.81 (-3.52 to 1.90)	0.550
		VFT vs SIA[*]	5.15 (3.40 to 6.91)	4.64 (2.82 to 6.45)	-0.52 (-3.07 to 2.03)	0.686
9 months	Treatment		HADS			
		VFT vs SIA[¥]	7.74 (6.16 to 9.32)	8.13 (6.55 to 9.71)	0.39 (-1.85 to 2.64)	0.726
		VFT vs SIA[*]	7.83 (6.25 to 9.41)	8.04 (6.46 to 9.62)	0.21 (-2.06 to 2.48)	0.856
	Treatment		PDS			
		VFT vs SIA[¥]	4.11 (2.45 to 5.76)	3.49 (1.84 to 5.15)	-0.61 (-2.95 to 1.73)	0.602
		VFT vs SIA[*]	4.05 (2.44 to 5.67)	3.55 (1.93 to 5.16)	-0.50 (-2.81 to 1.80)	0.663
18 months	Treatment		HADS			
		VFT vs SIA[¥]	7.84 (5.97 to 9.72)	6.89 (4.98 to 8.79)	-0.96 (-3.64 to 1.73)	0.479
		VFT vs SIA[*]	7.72 (5.88 to 9.55)	7.02 (5.15 to 8.88)	-0.70 (-3.36 to 1.95)	0.597
	Treatment		PDS			
		VFT vs SIA[¥]	2.95 (1.42 to 4.49)	2.46 (0.90 to 4.02)	-0.49 (-2.68 to 1.69)	0.653
		VFT vs SIA[*]	2.74 (1.36 to 4.12)	2.68 (1.28 to 4.08)	-0.06 (-2.04 to 1.92)	0.948

[¥]Adjusted for baseline score

^{*}Adjusted for baseline score, baby gender, cleft type, mother education, antenatal diagnosis, first biological child, and recruitment centre

[^]Two sided p-value <0.05 considered to be significant

Analysis of PAC-Q as an outcome variable at 11 weeks, 9 and 18 months

Time point	Variable	Mean SIA (n = 32)	Mean VFT (n = 31)	Difference (95% CI)	p-value[^]
11 weeks	<i>Treatment</i>	<i>Total child's self confidence</i>			
	VFT vs SIA [¥]	466.6 (446.9 – 486.3)	435.7 (415.7 – 455.7)	-30.88 (-59.05 – -2.71)	0.032
	VFT vs SIA [*]	468.2 (448.9 – 487.4)	433.0 (412.7 – 453.2)	-35.16 (-63.38 – -6.94)	0.016
	<i>Treatment</i>	<i>Total child's self-blame</i>			
	VFT vs SIA [¥]	222.0 (200.0 – 244.0)	224.3 (201.9 – 246.6)	2.30 (-29.42 – 34.03)	0.885
	VFT vs SIA [*]	218.6 (197.3 – 239.9)	227.8 (206.1 – 249.5)	9.19 (-21.76 – 40.13)	0.554
	<i>Treatment</i>	<i>Total growth through</i>			
	VFT vs SIA [¥]	536.1 (500.6 – 571.6)	448.4 (412.3 – 484.5)	-87.64 (-138.5 – -36.75)	0.001
	VFT vs SIA [*]	532.7 (495.9 – 569.4)	451.9 (414.6 – 489.2)	-80.79 (-133.87 – -27.72)	0.004
	<i>Treatment</i>	<i>Total resilience</i>			
	VFT vs SIA [¥]	394.9 (384.0 – 405.9)	386.2 (375.0 – 397.3)	-8.78 (-24.44 – 6.86)	0.266
	VFT vs SIA [*]	397.1 (386.6 – 407.5)	384.0 (373.4 – 394.6)	-13.03 (-28.03 – 1.97)	0.087
	<i>Treatment</i>	<i>Total treatment impact</i>			
	VFT vs SIA [¥]	206.9 (187.0 – 226.9)	198.8 (178.5 – 226.9)	-8.17 (-36.57 – 20.23)	0.567
	VFT vs SIA [*]	205.9 (185.5 – 226.3)	199.8 (179.0 – 220.6)	-6.07 (-35.4 – 23.3)	0.680
9 months	<i>Treatment</i>	<i>Total child's self confidence</i>			
	VFT vs SIA [¥]	478.1 (450.2 – 506.0)	454.1 (426.6 – 481.5)	-24.03 (-63.28 – 15.21)	0.225
	VFT vs SIA [*]	477.3 (448.7 – 505.8)	454.9 (426.9 – 483.0)	-22.31 (-62.65 – 18.02)	0.272
	<i>Treatment</i>	<i>Total child's self-blame</i>			
	VFT vs SIA [¥]	198.1 (172.4 – 223.8)	234.9 (209.7 – 260.3)	36.93 (0.42 – 73.44)	0.048
	VFT vs SIA [*]	196.5 (172.2 – 220.8)	236.5 (212.6 – 260.4)	40.0 (5.33 – 74.68)	0.025
	<i>Treatment</i>	<i>Total growth through</i>			

		VFT vs SIA [¥]	501.1 (441.9 – 560.3)	423.3 (365.0 – 481.5)	-77.8 (-161.24 – 5.64)	0.067
		VFT vs SIA *	490.3 (434.4 – 546.2)	433.7 (378.8 – 488.6)	-56.6 (-135.94 – 22.64)	0.158
	Treatment		Total resilience			
		VFT vs SIA [¥]	391.4 (377.4 – 405.4)	392.8 (379.1 – 406.6)	1.42 (-18.17 – 21.01)	0.885
		VFT vs SIA *	392.6 (379.4 – 405.9)	391.6 (378.6 – 404.7)	-1.02 (-19.77 – 17.75)	0.914
	Treatment		Total treatment impact			
		VFT vs SIA [¥]	194.4 (167.7 – 221.1)	184.9 (158.6 – 211.1)	-9.5 (-46.98 – 27.91)	0.612
		VFT vs SIA *	190.8 (164.2 – 217.4)	188.4 (162.2 – 214.6)	-2.39 (-39.99 – 35.21)	0.899
18 months	Treatment		Total child's self confidence			
		VFT vs SIA [¥]	456.5 (433.1 – 479.9)	447.4 (424.0 – 479.9)	-9.12 (-42.28 – 24.05)	0.584
		VFT vs SIA *	454.5 (432.8 – 476.2)	449.5 (427.7 – 471.2)	-5.05 (-36.0 – 25.89)	0.744
	Treatment		Total child's self-blame			
		VFT vs SIA [¥]	201.6 (176.3 – 227.0)	203.1 (177.8 – 228.5)	1.51 (-34.79 – 37.81)	0.934
		VFT vs SIA *	200.6 (174.6 – 226.6)	204.2 (178.2 – 230.2)	3.64 (-33.69 – 40.96)	0.846
	Treatment		Total growth through			
		VFT vs SIA [¥]	525.5 (461.7 – 589.2)	458.2 (394.5 – 521.9)	-67.19 (-157.59 – 23.21)	0.142
		VFT vs SIA *	522.2 (461.4 – 583.0)	461.5 (400.7 – 522.3)	-60.69 (-147.5 – 26.11)	0.166
	Treatment		Total resilience			
		VFT vs SIA [¥]	384.7 (372.4 – 397.0)	384.1 (371.8 – 396.4)	-0.56 (-18.0 – 16.87)	0.949
		VFT vs SIA *	385.7 (372.9 – 398.4)	383.1 (370.4 – 395.9)	-2.51 (-20.61 – 15.59)	0.782
	Treatment		Total treatment impact			
		VFT vs SIA [¥]	178.0 (149.6 – 206.4)	178.5 (150.1 – 206.8)	0.47 (-39.65 – 40.59)	0.981
		VFT vs SIA *	177.9 (148.2 – 207.5)	178.6 (148.9 – 208.2)	0.71 (-41.50 – 42.91)	0.973

‡Adjusted for baseline score

**Adjusted for baseline score, baby gender, cleft type, mother education, antenatal diagnosis, first biological child, and recruitment centre*

^Two sided p-value <0.05 considered to be significant

Adverse Events

There were no adverse events associated with this study.